



## *CO<sub>2</sub> laser consumables – Behrens®*



***Hypertherm®***

## Highest quality products

- OEM quality
- OEM-approved optics
- 100% satisfaction guarantee

## Technical service

OEM-trained technicians on staff with over 25 years of experience.

Free application support for all laser OEMs.

We stand behind our products with industry-leading technical expertise.

### Chemical code key

#### Lens

PFL	Pre-focus
MEN	Meniscus
PLX	Plano-convex
MTD	Mounted
Not MTD	Not mounted
LA	Low absorption
PO	Plano

#### Mirrors

CU	Copper
GAAS	Gallium arsenide
SI	Silicon
GE	Germanium
ZNSE	Zinc-selenide
PS	Phase shift
MMR	Maximum metal reflector
ATFR	Absorbing thin film reflector
TRZ	Total reflector – zero phase shift
ZPS	Zero phase shift
OC	Output coupler
RM	Rear mirror
COL-I	Collimator input
COL-O	Collimator output
AO	Adaptive optic
MO	Molybdenum
UC	Uncoated
MCX	Convex
MCC	Concave

#### Measurements

DIA	Diameter
FL	Focal length
ET	Edge thickness

#### Nozzles

CP	Chrome plated
HD/HP	High density/high pressure

## Product is available for the following major OEM brands

Amada®

---

Behrens®

---

Bystronic®

---

Cincinnati®

---

Finn-Power®

---

GHT-SHT®

---

Haas®

---

Haco®

---

Hankwang®

---

Laserdyne®

---

Laser Lab®

---

LVD®

---

Mazak®

---

Mitsubishi®

---

Murata Wiedemann® – Fanuc®

---

Niigata®

---

NTC® – Beyeler®

---

Precitec®

---

Prima Industrie®

---

Raskin®

---

Rouchaud®

---

Salvagnini®

---

Strippit®

---

Tanaka®

---

Thyssen®

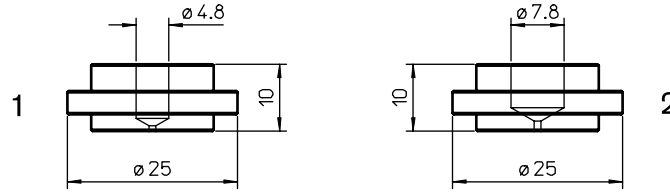
---

Trumpf®

---

Valfiv®

---



**Consumables**

Centricut part number	Reference number	Alternate reference	Description	Pkg qty
BE370-0001		L50	Nozzle – 0.8 mm	1
BE370-0002		L58	Nozzle – 1.0 mm	1
1 BE370-0003		L59	Nozzle – 1.2 mm	1
BE370-0004		L97	Nozzle – 1.5 mm	1
BE370-0005		L231	Nozzle – 2.0 mm	1
BE371-0001		L242	Nozzle – 0.8 mm	1
BE371-0002		L243	Nozzle – 1.0mm	1
2 BE371-0003		L244	Nozzle – 1.2 mm	1
BE371-0004		L245	Nozzle – 1.5 mm	1
BE371-0005		L246	Nozzle – 2.0 mm	1

**Optics**

Centricut part number	Reference number	Material	Diameter	Edge thickness	S1
<b>Phase shift mirrors</b>					
BE370-3833	893833	SI	2.0"	.200"	

**Optics care**

Centricut part number	Reference number	Description	Pkg qty
TR300-6452	N/A	CO <sub>2</sub> Lens paper (50 sheets)	1
TR300-1010	AL1010	Dropper, lens cleaning fluid	1
TR300-255	AL255	Loupe, magnifying	1
TR300-271	AL271	Base, lens maintenance	1
TR300-7388	787388	Mirror polish (250 ml)	1



***Broadest product line in the industry!***



**Hypertherm, Inc.**  
Hanover, NH 03755 USA  
603-643-3441 Tel

**Hypertherm Europe B.V.**  
4704 SE Roosendaal, Nederland  
31 165 596907 Tel

**Hypertherm (Shanghai)  
Trading Co., Ltd.**  
PR China 200052  
86-21 5258 3330 /1 Tel

**Hypertherm (S) Pte Ltd.**  
Singapore 349567  
65 6 841 2489 Tel

**Hypertherm (India) Thermal  
Cutting Pvt. Ltd.**  
Chennai, Tamil Nadu  
91 0 44 2834 5361 Tel

**Hypertherm Brasil Ltda.**  
Guarulhos, SP - Brasil  
55 11 2409 2636 Tel

**Hypertherm México, S.A. de C.V.**  
México, D.F.  
52 55 5681 8109 Tel

[www.hypertherm.com](http://www.hypertherm.com)



***Hypertherm***<sup>®</sup>

***Cut with confidence***<sup>™</sup>