



CO₂ laser consumables – Bystronic®



Hypertherm®

Highest quality products

- OEM quality
- OEM-approved optics
- 100% satisfaction guarantee

Technical service

OEM-trained technicians on staff with over 25 years of experience.

Free application support for all laser OEMs.

We stand behind our products with industry-leading technical expertise.

Chemical code key

Lens

PFL	Pre-focus
MEN	Meniscus
PLX	Plano-convex
MTD	Mounted
Not MTD	Not mounted
LA	Low absorption
PO	Plano

Mirrors

CU	Copper
GAAS	Gallium arsenide
SI	Silicon
GE	Germanium
ZNSE	Zinc-selenide
PS	Phase shift
MMR	Maximum metal reflector
ATFR	Absorbing thin film reflector
TRZ	Total reflector – zero phase shift
ZPS	Zero phase shift
OC	Output coupler
RM	Rear mirror
COL-I	Collimator input
COL-O	Collimator output
AO	Adaptive optic
MO	Molybdenum
UC	Uncoated
MCX	Convex
MCC	Concave

Measurements

DIA	Diameter
FL	Focal length
ET	Edge thickness

Nozzles

CP	Chrome plated
HD/HP	High density/high pressure

Product is available for the following major OEM brands

Amada®

Behrens®

Bystronic®

Cincinnati®

Finn-Power®

GHT-SHT®

Haas®

Haco®

Hankwang®

Laserdyne®

Laser Lab®

LVD®

Mazak®

Mitsubishi®

Murata Wiedemann® – Fanuc®

Niigata®

NTC® – Beyeler®

Precitec®

Prima Industrie®

Raskin®

Rouchaud®

Salvagnini®

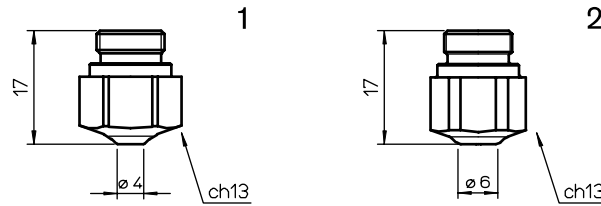
Strippit®

Tanaka®

Thyssen®

Trumpf®

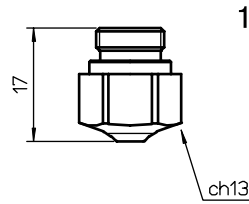
Valfiv®



Consumables

Centricut part number	Reference number	Alternate reference	Description	Pkg qty
BY310-4277	3-04277, HK08	L674	Nozzle – 0.8 mm HD	1
BY310-4277X	3-04277, HK08	L30674	Nozzle – 0.8 mm HD (10 pack)	10
BY310-1910	3-01910, HK10	L72	Nozzle – 1.0 mm HD	1
BY310-1910X	3-01910, HK10	L3072	Nozzle – 1.0 mm HD (10 pack)	10
BY310-1911	3-01911, HK12	L121	Nozzle – 1.25 mm HD	1
BY310-1911X	3-01911, HK12	L30121	Nozzle – 1.25 mm HD (10 pack)	10
BY310-1912	3-01912, HK15	L73	Nozzle – 1.5 mm HD	1
BY310-1912X	3-01912, HK15	L3073	Nozzle – 1.5 mm HD (10 pack)	10
BY310-1913	3-01913, HK17	L122	Nozzle – 1.75 mm HD	1
BY310-1913X	3-01913, HK17	L30122	Nozzle – 1.75 mm HD (10 pack)	10
BY310-1910CP	3-01910, HK10	L72X	Nozzle – 1.0 mm HD CP	1
BY310-1910CPX	3-01910, HK10	L3072X	Nozzle – 1.0 mm HD CP (10 pack)	10
BY310-1911CP	3-01911, HK12	L121X	Nozzle – 1.25 mm HD CP	1
BY310-1911CPX	3-01911, HK12	L30121X	Nozzle – 1.25 mm HD CP (10 pack)	10
BY310-1912CP	3-01912, HK15	L73X	Nozzle – 1.5 mm HD CP	1
BY310-1912CPX	3-01912, HK15	L3073X	Nozzle – 1.5 mm HD CP (10 pack)	10
BY310-1913CP	3-01913, HK17	L122X	Nozzle – 1.75 mm HD CP	1
BY310-1913CPX	3-01913, HK17	L30122X	Nozzle – 1.75 mm HD CP (10 pack)	10
BY310-1914	3-01914, HK20	L123	Nozzle – 2.0 mm HD	1
BY310-1914X	3-01914, HK20	L30123	Nozzle – 2.0 mm HD (10 pack)	10
BY310-1915	3-03854, HK25	L140	Nozzle – 2.5 mm HD	1
BY310-1915X	3-03854, HK25	L30140	Nozzle – 2.5 mm HD (10 pack)	10
BY310-6112	3-06112, HK30	L265	Nozzle – 3.0 mm HD	1
BY310-6112X	3-06112, HK30	L30265	Nozzle – 3.0 mm HD (10 pack)	10
BY310-0035	HK35	L700	Nozzle – 3.5 mm HD	1
BY310-0035X	HK35	L30700	Nozzle – 3.5 mm HD (10 pack)	10
BY310-0040	HK40	L701	Nozzle – 4.0 mm HD	1
BY310-0040X	HK40	L30701	Nozzle – 4.0 mm HD (10 pack)	10
BY310-1914CP	3-01914, HK20	L123X	Nozzle – 2.0 mm HD CP	1
BY310-1914CPX	3-01914, HK20	L30123X	Nozzle – 2.0 mm HD CP (10 pack)	10
BY310-1915CP	3-03854, HK25	L140X	Nozzle – 2.5 mm HD CP	1
BY310-1915CPX	3-03854, HK25	L30140X	Nozzle – 2.5 mm HD CP (10 pack)	10
BY310-6112CP	3-06112, HK30	L265X	Nozzle – 3.0 mm HD CP	1
BY310-6112CPX	3-06112, HK30	L30265X	Nozzle – 3.0 mm HD CP (10 pack)	10
BY310-0035CP	HK35	L700X	Nozzle – 3.5 mm HD CP	1
BY310-0035CPX	HK35	L30700X	Nozzle – 3.5 mm HD CP (10 pack)	10
BY310-0040CP	HK40	L701X	Nozzle – 4.0 mm HD CP	1
BY310-0040CPX	HK40	L30701X	Nozzle – 4.0 mm HD CP (10 pack)	10

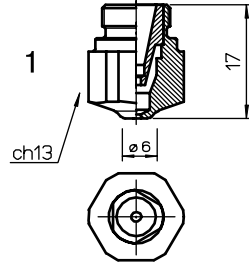
Note: Reference number indicates nozzle style and orifice diameter(s)



Consumables

Centricut part number	Reference number	Alternate reference	Description	Pkg qty
BY310-4273	3-04273, K08	L83	Nozzle – 0.8 mm	1
BY310-4273X	3-04273, K08	L3083	Nozzle – 0.8 mm (10 pack)	10
BY310-1905	3-01905, K10	L116	Nozzle – 1.0 mm	1
BY310-1905X	3-01905, K10	L30116	Nozzle – 1.0 mm (10 pack)	10
BY310-1906	3-01906, K12	L117	Nozzle – 1.25 mm	1
BY310-1906X	3-01906, K12	L30117	Nozzle – 1.25 mm (10 pack)	10
BY310-1907	3-01907, K15	L118	Nozzle – 1.5 mm	1
BY310-1907X	3-01907, K15	L30118	Nozzle – 1.5 mm (10 pack)	10
BY310-1908	3-01908, K17	L119	Nozzle – 1.75 mm	1
BY310-1908X	3-01908, K17	L30119	Nozzle – 1.75 mm (10 pack)	10
BY310-1909	3-01909, K20	L120	Nozzle – 2.0 mm	1
BY310-1909X	3-01909, K20	L30120	Nozzle – 2.0 mm (10 pack)	10
BY310-4274	3-04274, K25	L675	Nozzle – 2.5 mm	1
BY310-4274X	3-04274, K25	L30675	Nozzle – 2.5 mm (10 pack)	10
BY310-4275	3-04275, K30	L678	Nozzle – 3.0 mm	1
BY310-4275X	3-04275, K30	L30678	Nozzle – 3.0 mm (10 pack)	10
1 BY310-4273CP	3-04273, K08	L83X	Nozzle – 0.8 mm CP	1
BY310-4273CPX	3-04273, K08	L3083X	Nozzle – 0.8 mm CP (10 pack)	10
BY310-1905CP	3-01905, K10	L116X	Nozzle – 1.0 mm CP	1
BY310-1905CPX	3-01905, K10	L30116X	Nozzle – 1.0 mm CP (10 pack)	10
BY310-1906CP	3-01906, K12	L117X	Nozzle – 1.25 mm CP	1
BY310-1906CPX	3-01906, K12	L30117X	Nozzle – 1.25 mm CP (10 pack)	10
BY310-1907CP	3-01907, K15	L118X	Nozzle – 1.5 mm CP	1
BY310-1907CPX	3-01907, K15	L30118X	Nozzle – 1.5 mm CP (10 pack)	10
BY310-1908CP	3-01908, K17	L119X	Nozzle – 1.75 mm CP	1
BY310-1908CPX	3-01908, K17	L30119X	Nozzle – 1.75 mm CP (10 pack)	10
BY310-1909CP	3-01909, K20	L120X	Nozzle – 2.0 mm CP	1
BY310-1909CPX	3-01909, K20	L30120X	Nozzle – 2.0 mm CP (10 pack)	10
BY310-4274CP	3-04274, K25	L675X	Nozzle – 2.5 mm CP	1
BY310-4274CPX	3-04274, K25	L30675X	Nozzle – 2.5 mm CP (10 pack)	10
BY310-2475CP	3-04275, K30	L678X	Nozzle – 3.0 mm CP	1
BY310-2475CPX	3-04275, K30	L30678X	Nozzle – 3.0 mm CP (10 pack)	10

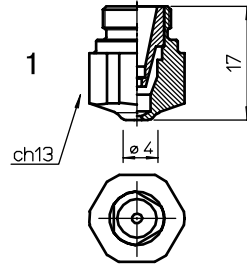
Note: Reference number indicates nozzle style and orifice diameter(s)



Consumables

Centricut part number	Reference number	Alternate reference	Description	Pkg qty
BY310-6058	3-16058, NK10-15	L1363	Nozzle – 1.0 mm double	1
BY310-6058X	3-16058, NK10-15	L301363	Nozzle – 1.0 mm double (10 pack)	10
BY310-6059	3-16059, NK12-15	L1364	Nozzle – 1.25 mm double	1
BY310-6059X	3-16059, NK12-15	L301364	Nozzle – 1.25 mm double (10 pack)	10
BY310-6060	3-16060, NK15-15	L1365	Nozzle – 1.5 mm double	1
BY310-6060X	3-16060, NK15-15	L301365	Nozzle – 1.5 mm double (10 pack)	10
BY310-4317	3-14317, NK17-15	L1366	Nozzle – 1.75 mm double	1
BY310-4317X	3-14317, NK17-15	L301366	Nozzle – 1.75 mm double (10 pack)	10
BY310-0005	3-14318, NK20-15	L604	Nozzle – 2.0 mm double	1
BY310-0005X	3-14318, NK20-15	L30604	Nozzle – 2.0 mm double (10 pack)	10
BY310-0006	3-14319, NK25-15	L605	Nozzle – 2.5 mm double	1
BY310-0006X	3-14319, NK25-15	L30605	Nozzle – 2.5 mm double (10 pack)	10
BY310-6256	3-16256, NK25-20	L612	Nozzle – 2.5 mm double	1
BY310-6256X	3-16256, NK25-20	L30612	Nozzle – 2.5 mm double (10 pack)	10
BY310-6061	3-16061, NK30-17	L613	Nozzle – 3.0 mm double	1
BY310-6061X	3-16061, NK30-17	L30613	Nozzle – 3.0 mm double (10 pack)	10
BY310-0007	3-16257, NK30-20	L606	Nozzle – 3.0 mm double	1
BY310-0007X	3-16257, NK30-20	L30606	Nozzle – 3.0 mm double (10 pack)	10
BY310-3530	NK35-30	L607	Nozzle – 3.5 mm double	1
BY310-3530X	NK35-30	L30607	Nozzle – 3.5 mm double (10 pack)	10
1 BY310-6058CP	3-16058, NK10-15	L1363X	Nozzle – 1.0 mm double CP	1
BY310-6058CPX	3-16058, NK10-15	L301363X	Nozzle – 1.0 mm double CP (10 pack)	10
BY310-6059CP	3-16059, NK12-15	L1364X	Nozzle – 1.25 mm double CP	1
BY310-6059CPX	3-16059, NK12-15	L301364X	Nozzle – 1.25 mm double CP (10 pack)	10
BY310-6060CP	3-16060, NK15-15	L1365X	Nozzle – 1.5 mm double CP	1
BY310-6060CPX	3-16060, NK15-15	L301365X	Nozzle – 1.5 mm double CP (10 pack)	10
BY310-4317CP	3-14317, NK17-15	L1366X	Nozzle – 1.75 mm double CP	1
BY310-4317CPX	3-14317, NK17-15	L301366X	Nozzle – 1.75 mm double CP (10 pack)	10
BY310-0005CP	3-14318, NK20-15	L604X	Nozzle – 2.0 mm double CP	1
BY310-0005CPX	3-14318, NK20-15	L30604X	Nozzle – 2.0 mm double CP (10 pack)	10
BY310-0006CP	3-14319, NK25-15	L605X	Nozzle – 2.5 mm double CP	1
BY310-0006CPX	3-14319, NK25-15	L30605X	Nozzle – 2.5 mm double CP (10 pack)	10
BY310-6256CP	3-16256, NK25-20	L612X	Nozzle – 2.5 mm double CP	1
BY310-6256CPX	3-16256, NK25-20	L30612X	Nozzle – 2.5 mm double CP (10 pack)	10
BY310-6061CP	3-16061, NK30-17	L613X	Nozzle – 3.0 mm double CP	1
BY310-6061CPX	3-16061, NK30-17	L30613X	Nozzle – 3.0 mm double CP (10 pack)	10
BY310-0007CP	3-16257, NK30-20	L606X	Nozzle – 3.0 mm double CP	1
BY310-0007CPX	3-16257, NK30-20	L30606X	Nozzle – 3.0 mm double CP (10 pack)	10
BY310-3530CP	NK35-30	L607X	Nozzle – 3.5 mm double CP	1
BY310-3530CPX	NK35-30	L30607X	Nozzle – 3.5 mm double CP (10 pack)	10

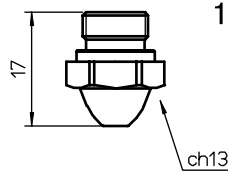
Note: Reference number indicates nozzle style and orifice diameter(s)



Consumables

Centricut part number	Reference number	Alternate reference	Description	Pkg qty
BY310-0001	3-16058, NK10-15	L600	Nozzle – 1.0 mm double	1
BY310-0001X	3-16058, NK10-15	L30600	Nozzle – 1.0 mm double (10 pack)	10
BY310-0002	3-16059, NK12-15	L601	Nozzle – 1.25 mm double	1
BY310-0002X	3-16059, NK12-15	L30601	Nozzle – 1.25 mm double (10 pack)	10
BY310-0003	3-16060, NK15-15	L602	Nozzle – 1.5 mm double	1
BY310-0003X	3-16060, NK15-15	L30602	Nozzle – 1.5 mm double (10 pack)	10
BY310-0004	3-14317, NK17-15	L603	Nozzle – 1.75 mm double	1
BY310-0004X	3-14317, NK17-15	L30603	Nozzle – 1.75 mm double (10 pack)	10
1 BY310-0001CP	3-16058, NK10-15	L600X	Nozzle – 1.0 mm double CP	1
BY310-0001CPX	3-16058, NK10-15	L30600X	Nozzle – 1.0 mm double CP (10 pack)	10
BY310-0002CP	3-16059, NK12-15	L601X	Nozzle – 1.25 mm double CP	1
BY310-0002CPX	3-16059, NK12-15	L30601X	Nozzle – 1.25 mm double CP (10 pack)	10
BY310-0003CP	3-16060, NK15-15	L602X	Nozzle – 1.5 mm double CP	1
BY310-0003CPX	3-16060, NK15-15	L30602X	Nozzle – 1.5 mm double CP (10 pack)	10
BY310-0004CP	3-14317, NK17-15	L603X	Nozzle – 1.75 mm double CP	1
BY310-0004CPX	3-14317, NK17-15	L30603X	Nozzle – 1.75 mm double CP (10 pack)	10

Note: Reference number indicates nozzle style and orifice diameter(s)

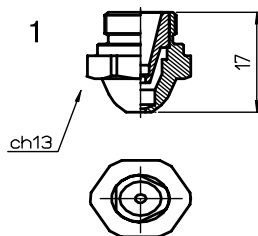


Byspeed

Consumables

Centricut part number	Reference number	Alternate reference	Description	Pkg qty
BY319-4271	3-04271, 08	L82	Nozzle – 0.8 mm	1
BY319-4271X	3-04271, 08	L3082	Nozzle – 0.8 mm (10 pack)	10
BY319-1894	3-01894, 10	L98	Nozzle – 1.0mm	1
BY319-1894X	3-01894, 10	L3098	Nozzle – 1.0 mm (10 pack)	10
BY319-1895	3-01895, 12	L99	Nozzle – 1.25 mm	1
BY319-1895X	3-01895, 12	L3099	Nozzle – 1.25 mm (10 pack)	10
BY319-1896	3-01896, 15	L100	Nozzle – 1.5 mm	1
BY319-1896X	3-01896, 15	L30100	Nozzle – 1.5 mm (10 pack)	10
BY319-0897	3-01897, 17	L101	Nozzle – 1.75 mm	1
BY319-1897	3-01897, 17	L30101	Nozzle – 1.75 mm (10 pack)	10
BY319-1898	3-01898, 20	L102	Nozzle – 2.0 mm	1
BY319-1898X	3-01898, 20	L30102	Nozzle – 2.0 mm (10 pack)	10
BY319-4272	3-04272, 25	L676	Nozzle – 2.5 mm	1
BY319-4272X	3-04272, 25	L30676	Nozzle – 2.5 mm (10 pack)	10
BY319-4275	3-04275, H08	L673	Nozzle – 0.8 mm HD	1
BY319-4275X	3-04275, H08	L30673	Nozzle – 0.8 mm HD (10 pack)	10
BY319-1899	3-01899, H10	L88	Nozzle – 1.0 mm HD	1
BY319-1899X	3-01899, H10	L3088	Nozzle – 1.0 mm HD (10 pack)	10
BY319-1900	3-01900, H12	L103	Nozzle – 1.25 mm HD	1
BY319-1900X	3-01900, H12	L30103	Nozzle – 1.25 mm HD (10 pack)	10
BY319-1901	3-01901, H15	L104	Nozzle – 1.5 mm HD	1
BY319-1901X	3-01901, H15	L30104	Nozzle – 1.5 mm HD (10 pack)	10
BY319-1902	3-01902, H17	L105	Nozzle – 1.75 mm HD	1
BY319-1902X	3-01902, H17	L30105	Nozzle – 1.75 mm HD (10 pack)	10
BY319-1903	3-01903, H20	L106	Nozzle – 2.0 mm HD	1
BY319-1903X	3-01903, H20	L30106	Nozzle – 2.0 mm HD (10 pack)	10
BY319-4276	3-04276, H25	L677	Nozzle – 2.5 mm HD	1
BY319-4276X	3-04276, H25	L30677	Nozzle – 2.5 mm HD (10 pack)	10
BY319-0030	H30	L679	Nozzle – 3.0 mm HD	1
BY319-0030X	H30	L30679	Nozzle – 3.0 mm HD (10 pack)	10
BY319-1899CP	3-01899, H10	L88X	Nozzle – 1.0 mm HD CP	1
BY319-1899CPX	3-01899, H10	L3088X	Nozzle – 1.0 mm HD CP (10 pack)	10
BY319-0900CP	3-01900, H12	L103X	Nozzle – 1.25 mm HD CP	1
BY319-0900CPX	3-01900, H12	L30103X	Nozzle – 1.25 mm HD CP (10 pack)	10
BY319-1901CP	3-01901, H15	L104X	Nozzle – 1.5 mm HD CP	1
BY319-1901CPX	3-01901, H15	L30104X	Nozzle – 1.5 mm HD CP (10 pack)	10
BY319-1902CP	3-01902, H17	L105X	Nozzle – 1.75 mm HD CP	1
BY319-1902CPX	3-01902, H17	L30105X	Nozzle – 1.75 mm HD CP (10 pack)	10
BY319-1903CP	3-01903, H20	L106X	Nozzle – 2.0 mm HD CP	1
BY319-1903CPX	3-01903, H20	L30106X	Nozzle – 2.0 mm HD CP (10 pack)	10
BY319-4276CP	3-04276, H25	L677X	Nozzle – 2.5 mm HD CP	1
BY319-4276CPX	3-04276, H25	L30677X	Nozzle – 2.5 mm HD CP (10 pack)	10
BY319-0030CP	H30	L679X	Nozzle – 3.0 mm HD CP	1
BY319-0030CPX	H30	L30679X	Nozzle – 3.0 mm HD CP (10 pack)	10

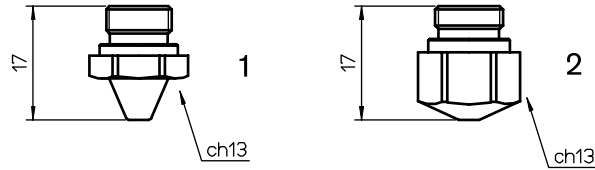
Note: Reference number indicates nozzle style and orifice diameter(s)



Consumables

Centricut part number	Reference number	Alternate reference	Description	Pkg qty
BY319-1015	N10-15	L1250	Nozzle – 1.0 mm double	1
BY319-1015X	N10-15	L301250	Nozzle – 1.0 mm double (10 pack)	10
BY319-1215	N12-15	L1251	Nozzle – 1.25 mm double	1
BY319-1215X	N12-15	L301251	Nozzle – 1.25 mm double (10 pack)	10
BY319-1515	N15-15	L1252	Nozzle – 1.5 mm double	1
BY319-1515X	N15-15	L301252	Nozzle – 1.5 mm double (10 pack)	10
BY319-1715	N17-15	L1253	Nozzle – 1.75 mm double	1
BY319-1715X	N17-15	L301253	Nozzle – 1.75 mm double (10 pack)	10
BY319-2015	N20-15	L1254	Nozzle – 2.0 mm double	1
BY319-2015X	N20-15	L301254	Nozzle – 2.0 mm double (10 pack)	10
BY319-2515	N25-15	L1255	Nozzle – 2.5 mm double	1
BY319-2515X	N25-15	L301255	Nozzle – 2.5 mm double (10 pack)	10
BY319-2520	N25-20	L1256	Nozzle – 2.5 mm double	1
BY319-2520X	N25-20	L301256	Nozzle – 2.5 mm double (10 pack)	10
BY319-3017	N30-17	L1257	Nozzle – 3.0 mm double	1
BY319-3017X	N30-17	L301257	Nozzle – 3.0 mm double (10 pack)	10
BY319-3020	N30-20	L1258	Nozzle – 3.0 mm double	1
BY319-3020X	N30-20	L301258	Nozzle – 3.0 mm double (10 pack)	10
1 BY319-1015CP	N10-15	L1250X	Nozzle – 1.0 mm double CP	1
BY319-1015CPX	N10-15	L301250X	Nozzle – 1.0 mm double CP (10 pack)	10
BY319-1215CP	N12-15	L1251X	Nozzle – 1.25 mm double CP	1
BY319-1215CPX	N12-15	L301251X	Nozzle – 1.25 mm double CP (10 pack)	10
BY319-1515CP	N15-15	L1252X	Nozzle – 1.5 mm double CP	1
BY319-1515CPX	N15-15	L301252X	Nozzle – 1.5 mm double CP (10 pack)	10
BY319-1715CP	N17-15	L1253X	Nozzle – 1.75 mm double CP	1
BY319-1715CPX	N17-15	L301253X	Nozzle – 1.75 mm double CP (10 pack)	10
BY319-2015CP	N20-15	L1254X	Nozzle – 2.0 mm double CP	1
BY319-2015CPX	N20-15	L301254X	Nozzle – 2.0 mm double CP (10 pack)	10
BY319-2515CP	N25-15	L1255X	Nozzle – 2.5 mm double CP	1
BY319-2515CPX	N25-15	L301255X	Nozzle – 2.5 mm double CP (10 pack)	10
BY319-2520CP	N25-20	L1256X	Nozzle – 2.5 mm double CP	1
BY319-2520CPX	N25-20	L301256X	Nozzle – 2.5 mm double CP (10 pack)	10
BY319-3017CP	N30-17	L1257X	Nozzle – 3.0 mm double CP	1
BY319-3017CPX	N30-17	L301257X	Nozzle – 3.0 mm double CP (10 pack)	10
BY319-3020CP	N30-20	L1258X	Nozzle – 3.0 mm double CP	1
BY319-3020CPX	N30-20	L301258X	Nozzle – 3.0 mm double CP (10 pack)	10

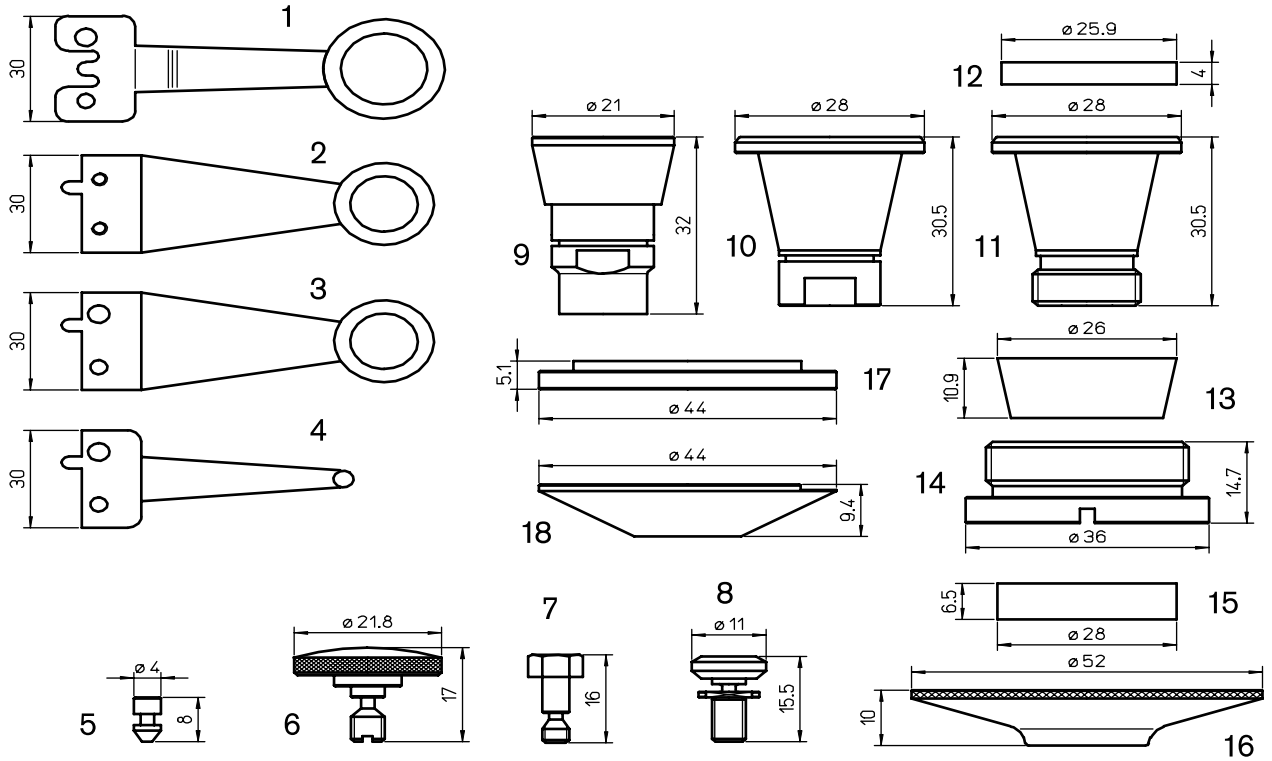
Note: Reference number indicates nozzle style and orifice diameter(s)



Consumables

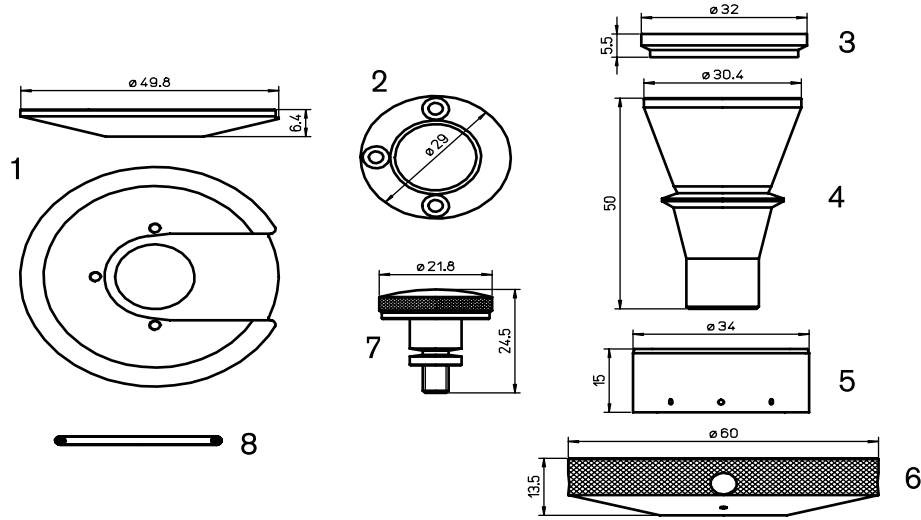
Centricut part number	Reference number	Alternate reference	Description	Pkg qty
BY318-4271	3-04271, 08	L22	Nozzle – 0.8 mm	1
BY318-4271X	3-04271, 08	L3022	Nozzle – 0.8 mm (10 pack)	10
BY318-1894	3-01894, 10	L14	Nozzle – 1.0mm	1
BY318-1894X	3-01894, 10	L3014	Nozzle – 1.0 mm (10 pack)	10
BY318-1895	3-01895, 12	L41	Nozzle – 1.25 mm	1
BY318-1895X	3-01895, 12	L3041	Nozzle – 1.25 mm (10 pack)	10
BY318-1896	3-01896, 15	L17	Nozzle – 1.5 mm	1
BY318-1896X	3-01896, 15	L3017	Nozzle – 1.5 mm (10 pack)	10
BY318-1897	3-01897, 17	L42	Nozzle – 1.75 mm	1
BY318-1897X	3-01897, 17	L3042	Nozzle – 1.75 mm (10 pack)	10
1 BY318-1898	3-01898, 20	L33	Nozzle – 2.0 mm	1
BY318-1898X	3-01898, 20	L3033	Nozzle – 2.0 mm (10 pack)	10
BY318-1899	3-01899, H10	L43	Nozzle – 1.0 mm HD	1
BY318-1899X	3-01899, H10	L3043	Nozzle – 1.0 mm HD (10 pack)	10
BY318-1900	3-01900, H12	L16	Nozzle – 1.25 mm HD	1
BY318-1900X	3-01900, H12	L3016	Nozzle – 1.25 mm HD (10 pack)	10
BY318-1901	3-01901, H15	L44	Nozzle – 1.5 mm HD	1
BY318-1901X	3-01901, H15	L3044	Nozzle – 1.5 mm HD (10 pack)	10
BY318-1902	3-01902, H17	L45	Nozzle – 1.75 mm HD	1
BY318-1902X	3-01902, H17	L3045	Nozzle – 1.75 mm HD (10 pack)	10
BY318-1903	3-01903, H20	L46	Nozzle – 2.0 mm HD	1
BY318-1903X	3-01903, H20	L3046	Nozzle – 2.0 mm HD (10 pack)	10
BY320-4273	3-04273, K08	L71	Nozzle – 0.8 mm	1
BY320-4273X	3-04273, K08	L3071	Nozzle – 0.8 mm (10 pack)	10
BY320-1905	3-01905, K10	L107	Nozzle – 1.0 mm	1
BY320-1905X	3-01905, K10	L30107	Nozzle – 1.0 mm (10 pack)	10
BY320-1906	3-01906, K12	L108	Nozzle – 1.25 mm	1
BY320-1906X	3-01906, K12	L30108	Nozzle – 1.25 mm (10 pack)	10
BY320-1907	3-01907, K15	L109	Nozzle – 1.5 mm	1
BY320-1907X	3-01907, K15	L30109	Nozzle – 1.5 mm (10 pack)	10
BY320-1908	3-01908, K17	L110	Nozzle – 1.75 mm	1
BY320-1908X	3-01908, K17	L30110	Nozzle – 1.75 mm (10 pack)	10
2 BY320-1909	3-01909, K20	L111	Nozzle – 2.0 mm	1
BY320-1909X	3-01909, K20	L30111	Nozzle – 2.0 mm (10 pack)	10
BY320-1910	3-01910, HK10	L89	Nozzle – 1.0 mm HD	1
BY320-1910X	3-01910, HK10	L3089	Nozzle – 1.0 mm HD (10 pack)	10
BY320-1911	3-01911, HK12	L112	Nozzle – 1.25 mm HD	1
BY320-1911X	3-01911, HK12	L30112	Nozzle – 1.25 mm HD (10 pack)	10
BY320-1912	3-01912, HK15	L113	Nozzle – 1.5 mm HD	1
BY320-1912X	3-01912, HK15	L30113	Nozzle – 1.5 mm HD (10 pack)	10
BY320-1913	3-01913, HK17	L114	Nozzle – 1.75 mm HD	1
BY320-1913X	3-01913, HK17	L30114	Nozzle – 1.75 mm HD (10 pack)	10
BY320-1914	3-01914, HK20	L115	Nozzle – 2.0 mm HD	1
BY320-1914X	3-01914, HK20	L30115	Nozzle – 2.0 mm HD (10 pack)	10

Note: Reference number indicates nozzle style and orifice diameter(s)



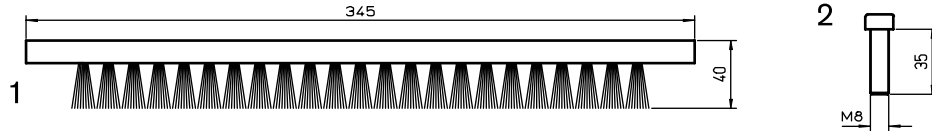
Consumables

Centricut part number	Reference number	Alternate reference	Description	Pkg qty
1 BY328-5530	3-05530	AL26	Scanner	1
2 BY328-2015	2-01262	AL5	Scanner	1
3 BY328-0015	2-02015	AL252	Scanner	1
4 BY328-2016	2-02016	AL251	Ball scanner	1
5 BY328-3137	4-03137	AL24	Pin	5
6 BY328-3136	4-03136	AL25	Knurled screw	1
7 BY328-0324	4-00324	AL1	Knurled screw	1
8 BY328-9001	3-09001	AL208	Cross jet screw	1
9 BY328-2291	3-02291	AL188	Nozzle body	1
10 BY328-5497	3-05497	AL102	Nozzle body	1
11 BY328-8701	2-08701	AL172	Nozzle body	1
12 BY328-0642	4-01642	AL125	Ceramic insulation disc	1
BY328-1642	4-01642	AL231	Ceramic insulation disc (new)	1
13 BY328-0959	4-01959	AL124	Ceramic cone	1
BY328-1959	4-01959	AL230	Ceramic cone (new)	1
14 BY328-1071	3-11071	AL174	Fastening nut	1
15 BY328-9010	4-09010	AL126	Ceramic insulation ring	1
16 BY328-8700	2-08700	AL173	Signboard	1
BY328-0005	2-08700	AL173X	Signboard – CP	1
17 BY328-3663-T	3-03663-T	AL206	Disc Teflon [®]	1
BY328-3663-C	3-03663-C	AL205	Disc ceramic	1
18 BY328-0004		AL246	Screw kit (3pcs.) for BY328-3663-C	1



Consumables

	Centricut part number	Reference number	Alternate reference	Description	Pkg qty
1	BY359-6035	3-06035	AL222	Signboard (copper)	1
	BY359-0001		AL245	Screw kit	3
2	BY328-328-1	3-06035-T	AL120	Disc – Teflon [®]	1
	BY328-328-2	3-06035-P	AL120/P	Disc – extended life	1
3	BY359-3113	3-13113	AL215	Insulating ring	1
4	BY359-0837	2-10837	AL214	Nozzle body	1
5	BY359-3422	3-13422	AL216	Insulating ring w/holes	1
6	BY359-3110	3-13110	AL258	Copper shield	1
7	BY328-4976	4-04976	AL209	Knurled screw	1
8	BY328-1300	3141300	AL225	O-ring	1
	BY328-1122	3141122	AL226	O-ring	1
	BY328-0236	3140236	3140236	O-ring	1
	BY328-0820	3140820	AL99	Lens o-ring	1



Consumables

Centricut part number	Reference number	Alternate reference	Description	Pkg qty
1 BY328-6511	2-06511	AL300	Brush w/screws	1
2 BY328-3884	333884	333884	Plastic screws	2

Filters

BY328-0020	D020	7004621	Air filter	1
BY328-4753	71064753	7001341	Vacuum pump filter	1
BY328-0145	8820145	8820145	Water filter 60/MC	1
BY328-0154	8820154	8820154	Water filter 140M/C	1
BY328-9417	A37100MFO	7509417	Filter 37x106	1
BY328-9412		7509412	Air filter (active Ccoal)	1
BY328-2456	502456	502456	Vacuum pump filter – 4000W	1

Optics

Centricut part number	Reference number	Type	Diameter	Focal length	Edge thickness
-----------------------	------------------	------	----------	--------------	----------------

Lenses

BY314-0185	4-00185	MEN	1.5"	3.75"	.236"
BY314-0186	4-00186	MEN	1.5"	5.00"	.236"
BY314-0187	4-00187	MEN	1.5"	7.50"	.236"
BY314-5094	4-05094	MEN	1.5"	5.00"	.354"
BY314-1644	120216, 621644	MEN	1.5"	5.00"	.354"
BY314-5095	4-05095	MEN	1.5"	7.50"	.354"
BY314-8637	698637	MEN	1.5"	7.50"	.354"

Ultra low absorption lenses

BY314-0186MP5	4-00186	MEN	1.5"	5.00"	.236"
BY314-0187MP5	4-00187	MEN	1.5"	7.50"	.236"
BY314-5094MP5	4-05094	MEN	1.5"	5.00"	.354"
BY314-5095MP5	4-05095	MEN	1.5"	7.50"	.354"

Centricut part number	Reference number	Material	Diameter	Edge thickness	S1
-----------------------	------------------	----------	----------	----------------	----

Phase shift mirrors

BY314-0226	4-00226	CU	1.96"	.394"	
BY314-9328	4-09328	CU	1.96"	.394"	
BY314-8232	558232/F	CU	2.0"	2.126"	

Centricut part number	Reference number	Type	Material	Diameter	Edge thickness	S1
-----------------------	------------------	------	----------	----------	----------------	----

Collimating optics

BY314-1017	4-11017	MMR	CU	1.96"	.394"	100MCC
BY314-1018	4-11018	MMR	CU	1.96"	.394"	10MCC
BY314-7006		MMR	CU	1.96"	.394"	2MCC/SPT
BY314-7007		MMR	CU	1.96"	.394"	1.4MCX
BY314-9332	4-09332	MMR	CU	2.36"	.393"	45 DEG

New items shown in bold

Centricut part number	Reference number	Type	Material	Diameter	Edge thickness	S1
Zero phase shift mirrors and total reflectors						
BY314-0201	4-00201	ZPS	CU	2.0"	.390"	
BY314-5173	4-05173	TRZ	CU	1.96"	.394"	1.68MCX
BY314-5172	4-05172	TRZ	CU	2.0"	.390"	1MCX
BY314-0227	4-00227	TRZ	CU	2.0"	.390"	99.50%
BY314-9329	4-09329	TRZ	CU	1.96"	.394"	
BY314-0214	4-00214	ZPS	CU	2.0"	.390"	2.25MCX
BY314-0203	4-00203	ZPS	CU	1.96"	.394"	
BY314-0217	4-00217	ZPS	CU	2.0"	.390"	3MCC
BY314-0200	4-0020	ZPS	CU	2.36"	.390"	
BY314-1425	591425/F	MMR	CU	2.0"	2.126"	

Centricut part number	Reference number	Material	Diameter	Edge thickness	S1/Reflectivity	S2
Output couplers						
BY314-3122	4-03122	ZNSE	1.0"	.236"	30MMC-65%	30MCX
BY314-9352	4-09352	ZNSE	1.18"	.236"	30MCC	
BY314-8318	4-08318	ZNSE	1.18"	.236"	30MCC-50%	

Centricut part number	Reference number	Material	Diameter	Edge thickness	S1/Reflectivity	S2
Rear mirrors						
BY314-3118	4-03118	GE	1.0"	.236"	15MCC-99.60%	
BY314-9336	4-09336	GE	1.18"	.236"	15MCC	
BY314-8317	4-08317	GE	1.18"	.236"	30MCC-99.60%	

Optics care

Centricut part number	Reference number	Description	Pkg qty
TR300-6452	N/A	CO ₂ Lens paper (50 sheets)	1
TR300-SC20		Cotton swab – 20 piece	1
TR300-1115		Lens cleaning pre-cut cotton –100 piece	1
TR300-1010	AL1010	Dropper, lens cleaning fluid	1
TR300-255	AL255	Loupe, magnifying	1
TR300-271	AL271	Base, lens maintenance	1
TR300-7388	787388	Mirror polish (250 ml)	1

New items shown in bold



Broadest product line in the industry!



Hypertherm, Inc.
Hanover, NH 03755 USA
603-643-3441 Tel

Hypertherm Europe B.V.
4704 SE Roosendaal, Nederland
31 165 596907 Tel

**Hypertherm (Shanghai)
Trading Co., Ltd.**
PR China 200052
86-21 5258 3330 /1 Tel

Hypertherm (S) Pte Ltd.
Singapore 349567
65 6 841 2489 Tel

**Hypertherm (India) Thermal
Cutting Pvt. Ltd.**
Chennai, Tamil Nadu
91 0 44 2834 5361 Tel

Hypertherm Brasil Ltda.
Guarulhos, SP - Brasil
55 11 2409 2636 Tel

Hypertherm México, S.A. de C.V.
México, D.F.
52 55 5681 8109 Tel

www.hypertherm.com



Hypertherm[®]

Cut with confidence[®]