



CO₂ laser consumables – Finn-Power®



Hypertherm®

Highest quality products

- OEM quality
- OEM-approved optics
- 100% satisfaction guarantee

Technical service

OEM-trained technicians on staff with over 25 years of experience.

Free application support for all laser OEMs.

We stand behind our products with industry-leading technical expertise.

Chemical code key

Lens

PFL	Pre-focus
MEN	Meniscus
PLX	Plano-convex
MTD	Mounted
Not MTD	Not mounted
LA	Low absorption
PO	Plano

Mirrors

CU	Copper
GAAS	Gallium arsenide
SI	Silicon
GE	Germanium
ZNSE	Zinc-selenide
PS	Phase shift
MMR	Maximum metal reflector
ATFR	Absorbing thin film reflector
TRZ	Total reflector – zero phase shift
ZPS	Zero phase shift
OC	Output coupler
RM	Rear mirror
COL-I	Collimator input
COL-O	Collimator output
AO	Adaptive optic
MO	Molybdenum
UC	Uncoated
MCX	Convex
MCC	Concave

Measurements

DIA	Diameter
FL	Focal length
ET	Edge thickness

Nozzles

CP	Chrome plated
HD/HP	High density/high pressure

Product is available for the following major OEM brands

Amada®

Behrens®

Bystronic®

Cincinnati®

Finn-Power®

GHT-SHT®

Haas®

Haco®

Hankwang®

Laserdyne®

Laser Lab®

LVD®

Mazak®

Mitsubishi®

Murata Wiedemann® – Fanuc®

Niigata®

NTC® – Beyeler®

Precitec®

Prima Industrie®

Raskin®

Rouchaud®

Salvagnini®

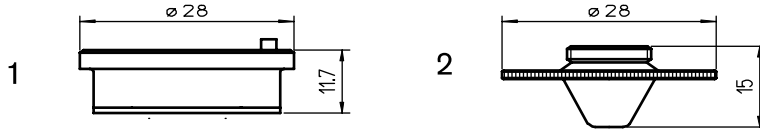
Strippit®

Tanaka®

Thyssen®

Trumpf®

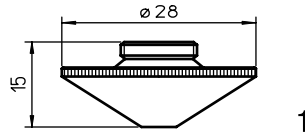
Valfiv®



Consumables

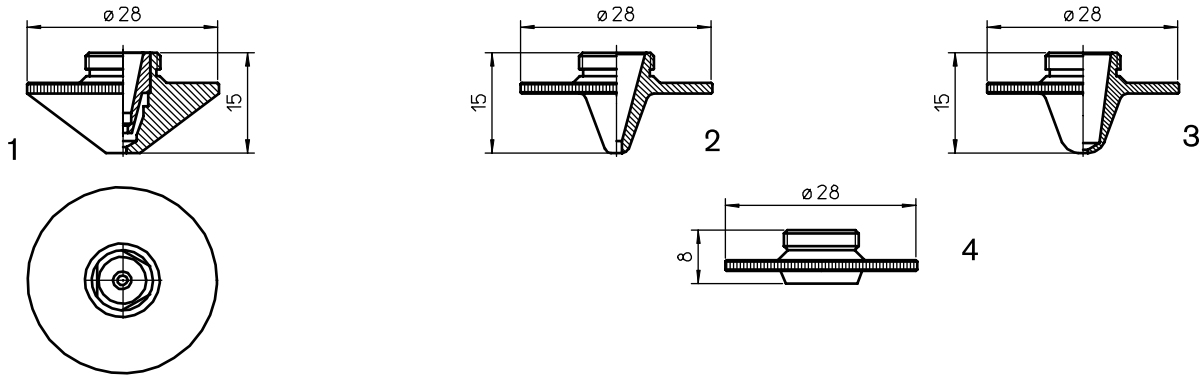
	Centricut part number	Reference number	Alternate reference	Description	Pkg qty
1	PT348-1330	281330, P0571-260-00001	AL131	Nozzle holder – ceramic	1
	PT348-1051	P0571-1051-00001	AL355	Nozzle holder – OEM KT B2"	1
	PT350-1590	281590, P0591-569-00008	L247	Nozzle – 0.8 mm	1
	PT350-1331	281331, P0591-561-00010	L162	Nozzle – 1.0 mm	1
	PT350-1351	281351, P0591-562-00012	L130	Nozzle – 1.25 mm	1
	PT350-1352	281352, P0591-563-00015	L131	Nozzle – 1.5 mm	1
	PT350-0017		L248	Nozzle – 1.7 mm	1
	PT350-1353	281353, P0591-564-00018	L153	Nozzle – 1.8 mm	1
	PT350-1354	281354, P0591-565-00020	L132	Nozzle – 2.0 mm	1
	PT350-0023		L154	Nozzle – 2.3 mm	1
	PT350-1591	281591, P0591-566-00025	L155	Nozzle – 2.5 mm	1
	PT350-0030		L156	Nozzle – 3.0 mm	1
2	PT350-1590CP	281590, P0591-569-00008	L247X	Nozzle – 0.8 mm CP	1
	PT350-1331CP	281331, P0591-561-00010	L162X	Nozzle – 1.0 mm CP	1
	PT350-1351CP	281351, P0591-562-00012	L130X	Nozzle – 1.25 mm CP	1
	PT350-1352CP	281352, P0591-563-00015	L131X	Nozzle – 1.5 mm CP	1
	PT350-0001CP		L248X	Nozzle – 1.7 mm CP	1
	PT350-1353CP	281353, P0591-564-00018	L153X	Nozzle – 1.8 mm CP	1
	PT350-1354CP	281354, P0591-565-00020	L132X	Nozzle – 2.0 mm CP	1
	PT350-0002CP		L154X	Nozzle – 2.3 mm CP	1
	PT350-1591CP	281591, P0591-566-00025	L155X	Nozzle – 2.5 mm CP	1
	PT350-0003CP		L156X	Nozzle – 3.0 mm CP	1

New items shown in bold



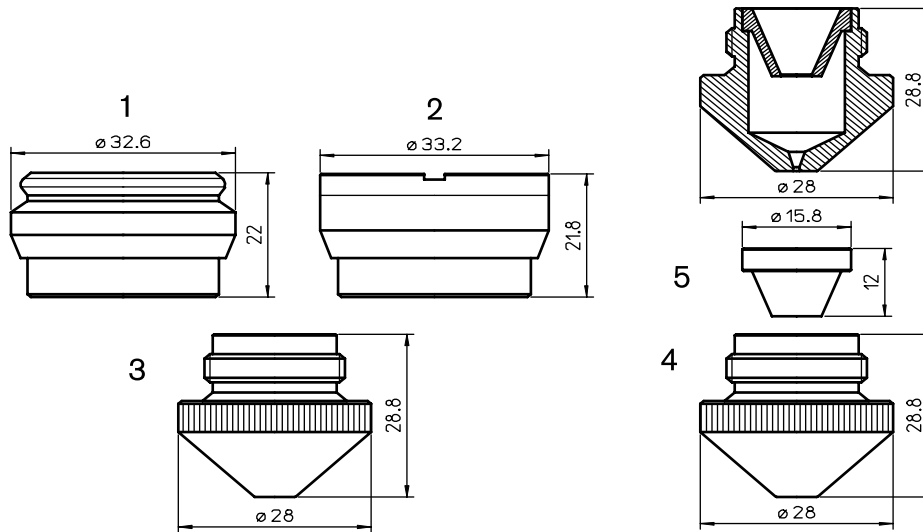
Consumables

Centricut part number	Reference number	Alternate reference	Description	Pkg qty
PT345-0008		L935	Nozzle – 0.8 mm HD	1
PT345-1548	281548, P0591-571-00010	L234	Nozzle – 1.0 mm HD	1
PT345-1549	281549, P0591-572-00012	L235	Nozzle – 1.25 mm HD	1
PT345-1463	281463, P0591-573-00015	L236	Nozzle – 1.5 mm HD	1
PT345-0001	P0591-574-00018	L237	Nozzle – 1.8 mm HD	1
PT345-1550	281550, P0591-575-00020	L238	Nozzle – 2.0 mm HD	1
PT345-0003		L239	Nozzle – 2.3 mm HD	1
PT345-1551	281551, P0591-576-00025	L240	Nozzle – 2.5 mm HD	1
PT345-1552		L936	Nozzle – 2.75 mm HD	1
PT345-0002		L241	Nozzle – 3.0 mm HD	1
PT345-0005		L826	Nozzle – 3.2 mm HD	1
PT345-0006		L827	Nozzle – 3.5 mm HD	1
PT345-0004		L828	Nozzle – 4.0 mm HD	1
PT345-0007		L829	Nozzle – 4.5 mm HD	1
1 PT345-1547CP		L935X	Nozzle – 0.8 mm HD CP	1
PT345-1548CP	281548, P0591-571-00010	L234X	Nozzle – 1.0 mm HD CP	1
PT345-1549CP	281549, P0591-572-00012	L235X	Nozzle – 1.25 mm HD CP	1
PT345-1463CP	281463, P0591-573-00015	L236X	Nozzle – 1.5 mm HD CP	1
PT345-0001CP		L237X	Nozzle – 1.8 mm HD CP	1
PT345-1550CP	281550, P0591-575-00020	L238X	Nozzle – 2.0 mm HD CP	1
PT345-0003CP		L239X	Nozzle – 2.3 mm HD CP	1
PT345-1551CP	281551, P0591-576-00025	L240X	Nozzle – 2.5 mm HD CP	1
PT345-1552CP		L936X	Nozzle – 2.75 mm HD CP	1
PT345-0002CP		L241X	Nozzle – 3.0 mm HD CP	1
PT345-0005CP		L826X	Nozzle – 3.2 mm HD CP	1
PT345-0006CP		L827X	Nozzle – 3.5 mm HD CP	1
PT345-0004CP		L828X	Nozzle – 4.0 mm HD CP	1
PT345-0007CP		L829X	Nozzle – 4.5 mm HD CP	1



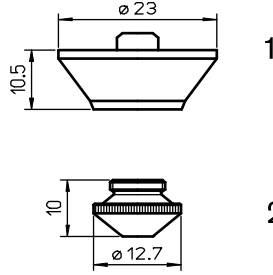
Consumables

Centricut part number	Reference number	Alternate reference	Description	Pkg qty
PT358-0669	Centricut design	L669	Nozzle – 0.8 mm double	1
PT358-0010	Centricut design	L660	Nozzle – 1.0 mm double	1
PT358-0125	Centricut design	L661	Nozzle – 1.25 mm double	1
PT358-0015	Centricut design	L662	Nozzle – 1.5 mm double	1
PT358-0018	Centricut design	L663	Nozzle – 1.8 mm double	1
PT358-0020	Centricut design	L664	Nozzle – 2.0 mm double	1
PT358-0023	Centricut design	L665	Nozzle – 2.3 mm double	1
PT358-0007	Centricut design	L666	Nozzle – 2.5 mm double	1
PT358-0030	Centricut design	L667	Nozzle – 3.0 mm double	1
PT358-0035	Centricut design	L668	Nozzle – 3.5 mm double	1
1 PT358-0008CP	Centricut design	L669X	Nozzle – 0.8 mm double CP	1
PT358-0010CP	Centricut design	L660X	Nozzle – 1.0 mm double CP	1
PT358-0125CP	Centricut design	L661X	Nozzle – 1.25 mm double CP	1
PT358-0015CP	Centricut design	L662X	Nozzle – 1.5 mm double CP	1
PT358-0018CP	Centricut design	L663X	Nozzle – 1.8 mm double CP	1
PT358-0020CP	Centricut design	L664X	Nozzle – 2.0 mm double CP	1
PT358-0023CP	Centricut design	L665X	Nozzle – 2.3 mm double CP	1
PT358-0025CP	Centricut design	L666X	Nozzle – 2.5 mm double CP	1
PT358-0030CP	Centricut design	L667X	Nozzle – 3.0 mm double CP	1
PT358-0035CP	Centricut design	L668X	Nozzle – 3.5 mm double CP	1
2 PT406-0001	Centricut design	L738	Nozzle – 1.0 mm HD	1
PT406-0002	Centricut design	L739	Nozzle – 1.25 mm HD	1
PT406-0003	Centricut design	L740	Nozzle – 1.5 mm HD	1
3 PT406-0008	Centricut design	L792	Nozzle – 0.8 mm	1
PT406-0010	Centricut design	L793	Nozzle – 1.0 mm	1
PT406-0125	Centricut design	L794	Nozzle – 1.25 mm	1
PT406-0015	Centricut design	L742	Nozzle – 1.5 mm	1
PT406-0018	Centricut design	L743	Nozzle – 1.8 mm	1
PT406-0020	Centricut design	L744	Nozzle – 2.0 mm	1
4 PT406-0043	Centricut design	AL43	Nozzle adapter	1



Consumables

	Centricut part number	Reference number	Alternate reference	Description	Pkg qty
1	PT311-0831	280831, P0492-622-00002	AL35	Nozzle holder KTM 1.5"DX	1
2	PT311-0565	280565, P0497-605-00001, 29100106	AL40	Nozzle holder KTM 1.5" DXN	1
3	PT311-0010	281253, P0380-251-00010	L163	Nozzle – 1.0 mm	1
	PT311-0012	281254, P0380-252-00012	L164	Nozzle – 1.2 mm	1
	PT311-0015	281255, P0380-253-00015	L165	Nozzle – 1.5 mm	1
	PT311-0020	281270, P0380-254-00020	L166	Nozzle – 2.0 mm	1
	PT311-0025	281271, P0380-255-00025	L167	Nozzle – 2.5 mm	1
	PT311-0030	281271-3.0	L201	Nozzle – 3.0 mm	1
	PT311-1002	Centricut design	L259	Nozzle – 1.0 mm outer	1
PT311-0003	Centricut design	L260	Nozzle – 1.2 mm outer	1	
4	PT311-1004	Centricut design	L261	Nozzle – 1.5 mm outer	1
	PT311-1005	Centricut design	L262	Nozzle – 2.0 mm outer	1
	PT311-1006	Centricut design	L263	Nozzle – 2.5 mm outer	1
	PT311-1007	Centricut design	L264	Nozzle – 3.0 mm outer	1
5	LV418-0001	Centricut design	L157	Nozzle – inner	1



Consumables

	Centricut part number	Reference number	Alternate reference	Description	Pkg qty
1	PT344-1079	281079, P0492-430-00003, W149	AL138	Nozzle holder KT M1.5" S F2.5	1
	PT344-0013	280013, P0492-441-00008	L400	Nozzle – 0.8 mm	1
	PT344-0013X	280013, P0492-441-00008	L30400	Nozzle – 0.8 mm (10 pack)	10
	PT344-0014	280014, P0492-442-00010, W223	L401	Nozzle – 1.0 mm	1
	MB336-223X	280014, P0492-442-00010, W223	L30401	Nozzle – 1.0 mm (10 pack)	10
	PT344-0015	280015, P0492-443-00012	L402	Nozzle – 1.2 mm	1
	PT344-0015X	280015, P0492-443-00012	L30402	Nozzle – 1.2 mm (10 pack)	10
	MB336-224	280016, P0492-444-00015, W224	L403	Nozzle – 1.5 mm	1
	MB336-224X	280016, P0492-444-00015, W224	L30403	Nozzle – 1.5 mm (10 pack)	10
	PT344-0018	P0492-447-00018	L543	Nozzle – 1.8 mm	1
	PT344-0018X	P0492-447-00018	L30543	Nozzle – 1.8 mm (10 pack)	10
	PT344-0937	280937, P0492-445-00020, W225	L544	Nozzle – 2.0 mm	1
	MB336-225X	280937, P0492-445-00020, W225	L30544	Nozzle – 2.0 mm (10 pack)	10
	PT344-0023	P0492-448-00023	L546	Nozzle – 2.3 mm	1
	PT344-0023X	P0492-448-00023	L30546	Nozzle – 2.3 mm (10 pack)	10
	MB336-226	281791, P0492-446-00025, W226	L545	Nozzle – 2.5 mm	1
	MB336-226X	281791, P0492-446-00025, W226	L30545	Nozzle – 2.5 mm (10 pack)	10
	MB336-0005		L547	Nozzle – 3.0 mm	1
2	MB336-0005X		L30547	Nozzle – 3.0 mm (10 pack)	10
	PT344-0008CP	280013, P0492-441-00008	L400X	Nozzle – 0.8 mm CP	1
	PT344-0008CPX	280013, P0492-441-00008	L30400X	Nozzle – 0.8 mm CP (10 pack)	10
	PT344-0010CP	280014, P0492-442-00010, W223	L401X	Nozzle – 1.0 mm CP	1
	PT344-0010CPX	280014, P0492-442-00010, W223	L30401X	Nozzle – 1.0 mm CP (10 pack)	10
	PT344-0012CP		L402X	Nozzle – 1.2 mm CP	1
	PT344-0012CPX		L30402X	Nozzle – 1.2 mm CP (10 pack)	10
	PT344-0015CP	280016, P0492-444-00015, W224	L403X	Nozzle – 1.5 mm CP	1
	PT344-0015CPX	280016, P0492-444-00015, W224	L30403X	Nozzle – 1.5 mm CP (10 pack)	10
	PT344-0018CP	P0492-447-00018	L543X	Nozzle – 1.8 mm CP	1
	PT344-0018CPX	P0492-447-00018	L30543X	Nozzle – 1.8 mm CP (10 pack)	10
	PT344-0022CP	280937, P0492-445-00020, W225	L544X	Nozzle – 2.0 mm CP	1
	PT344-0022CPX	280937, P0492-445-00020, W225	L30544X	Nozzle – 2.0 mm CP (10 pack)	10
	PT344-0023CP	P0492-448-00023	L546X	Nozzle – 2.3 mm CP	1
	PT344-0023CPX	P0492-448-00023	L30546X	Nozzle – 2.3 mm CP (10 pack)	10
	PT344-0025CP	281791, P0492-446-00025, W226	L545X	Nozzle – 2.5 mm CP	1
	PT344-0025CPX	281791, P0492-446-00025, W226	L30545X	Nozzle – 2.5 mm CP (10 pack)	10
	PT344-0027CP		L547X	Nozzle – 3.0 mm CP	1
	PT344-0027CPX		L30547X	Nozzle – 3.0 mm CP (10 pack)	10

Optics care

Centricut part number	Reference number	Description	Pkg qty
TR300-6452	N/A	CO ₂ Lens paper (50 sheets)	1
TR300-1010	AL1010	Dropper, lens cleaning fluid	1
TR300-255	AL255	Loupe, magnifying	1
TR300-271	AL271	Base, lens maintenance	1
TR300-7388	787388	Mirror polish (250 ml)	1

Centricut is a registered trademark of Hypertherm, Inc. and may be registered in the United States and/or other countries. All other trademarks are the properties of their respective owners. Centricut is in no way affiliated with Finn-Power.



Broadest product line in the industry!



Hypertherm, Inc.
Hanover, NH 03755 USA
603-643-3441 Tel

Hypertherm Europe B.V.
4704 SE Roosendaal, Nederland
31 165 596907 Tel

**Hypertherm (Shanghai)
Trading Co., Ltd.**
PR China 200052
86-21 5258 3330 /1 Tel

Hypertherm (S) Pte Ltd.
Singapore 349567
65 6 841 2489 Tel

**Hypertherm (India) Thermal
Cutting Pvt. Ltd.**
Chennai, Tamil Nadu
91 0 44 2834 5361 Tel

Hypertherm Brasil Ltda.
Guarulhos, SP - Brasil
55 11 2409 2636 Tel

Hypertherm México, S.A. de C.V.
México, D.F.
52 55 5681 8109 Tel

www.hypertherm.com



Hypertherm[®]

Cut with confidence[®]