



## *CO<sub>2</sub> laser consumables – Mazak®*



***Hypertherm®***

### Highest quality products

- OEM quality
- OEM-approved optics
- 100% satisfaction guarantee

### Technical service

OEM-trained technicians on staff with over 25 years of experience.

Free application support for all laser OEMs.

We stand behind our products with industry-leading technical expertise.

### Chemical code key

#### Lens

PFL	Pre-focus
MEN	Meniscus
PLX	Plano-convex
MTD	Mounted
Not MTD	Not mounted
LA	Low absorption
PO	Plano

#### Mirrors

CU	Copper
GAAS	Gallium arsenide
SI	Silicon
GE	Germanium
ZNSE	Zinc-selenide
PS	Phase shift
MMR	Maximum metal reflector
ATFR	Absorbing thin film reflector
TRZ	Total reflector – zero phase shift
ZPS	Zero phase shift
OC	Output coupler
RM	Rear mirror
COL-I	Collimator input
COL-O	Collimator output
AO	Adaptive optic
MO	Molybdenum
UC	Uncoated
MCX	Convex
MCC	Concave

#### Measurements

DIA	Diameter
FL	Focal length
ET	Edge thickness

#### Nozzles

CP	Chrome plated
HD/HP	High density/high pressure

### Product is available for the following major OEM brands

Amada®

---

Behrens®

---

Bystronic®

---

Cincinnati®

---

Finn-Power®

---

GHT-SHT®

---

Haas®

---

Haco®

---

Hankwang®

---

Laserdyne®

---

Laser Lab®

---

LVD®

---

Mazak®

---

Mitsubishi®

---

Murata Wiedemann® – Fanuc®

---

Niigata®

---

NTC® – Beyeler®

---

Precitec®

---

Prima Industrie®

---

Raskin®

---

Rouchaud®

---

Salvagnini®

---

Strippit®

---

Tanaka®

---

Thyssen®

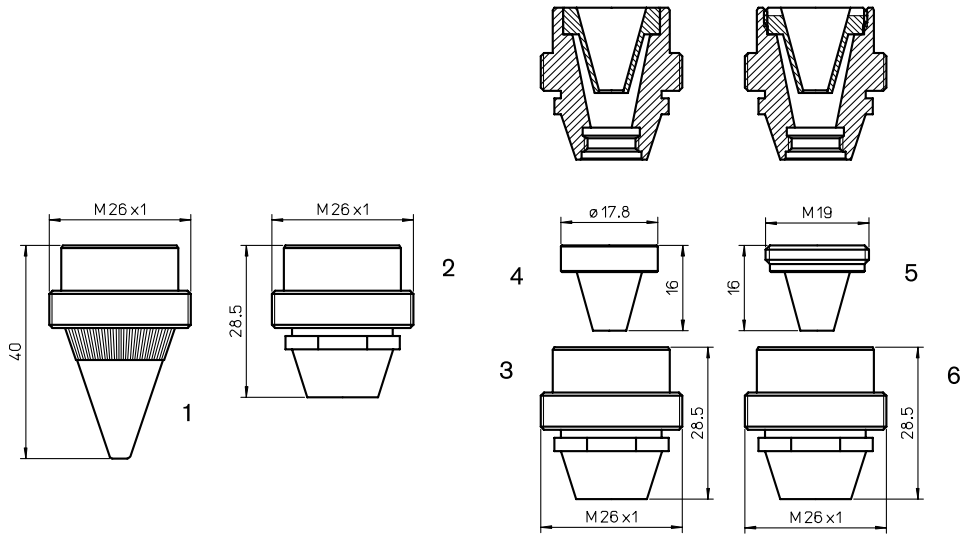
---

Trumpf®

---

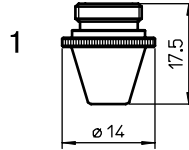
Valfiv®

---



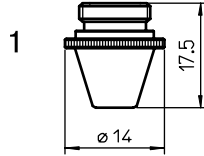
**Consumables**

Centricut part number	Reference number	Alternate reference	Description	Pkg qty
MZ323-0060-1.0	46523300060	L61	Nozzle – 1.0 mm	1
MZ323-0062-1.2	46523300062	L60	Nozzle – 1.2 mm	1
MZ323-0061-1.5	46523300061	L84	Nozzle – 1.5 mm	1
1 MZ323-0061-1.7	46523300061	L4	Nozzle – 1.7 mm	1
MZ323-0018		L331	Nozzle – 1.8 mm	1
MZ323-0063-2.0	46523300063	L51	Nozzle – 2.0 mm	1
MZ323-0063-2.5	46523300063	L333	Nozzle – 2.5 mm	1
2 MZ321-0510	46603350510	AL11	Nozzle adaptor	1
3 MZ321-0001	Centricut design	AL44	Nozzle adaptor	1
4 MZ321-0045	Centricut design	AL45	Inner nozzle	1
5 MZ321-0055	Centricut design	AL55	Inner nozzle	1
6 MZ331-0003	Centricut design	AL54	Nozzle adaptor	1



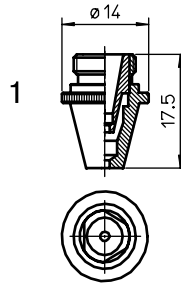
**Consumables**

Centricut part number	Reference number	Alternate reference	Description	Pkg qty
MZ322-0008	46603350508	L78	Nozzle – 0.8 mm	1
MZ322-0008X	46603350508	L3078	Nozzle – 0.8 mm (10 pack)	10
MZ322-0511-1.0	46603350511	L69	Nozzle – 1.0 mm	1
MZ322-0511X	46603350511	L3069	Nozzle – 1.0 mm (10 pack)	10
MZ322-0512-1.2	46603350512	L77	Nozzle – 1.2 mm	1
MZ322-0512X	46603350512	L3077	Nozzle – 1.2 mm (10 pack)	10
MZ322-0520-1.5	4660335052B	L127	Nozzle – 1.5 mm	1
PT322-0520X	4660335052B	L30127	Nozzle – 1.5 mm (10 pack)	10
MZ322-0517-1.7	46603350517	L79	Nozzle – 1.7 mm	1
MZ322-1517X	46603350517	L3079	Nozzle – 1.7 mm (10 pack)	10
MZ322-0517	46603350517-1.8	L281	Nozzle – 1.8 mm	1
MZ322-0517X	46603350517-1.8	L30281	Nozzle – 1.8 mm (10 pack)	10
MZ322-0522-2.0	4660335052C	L80	Nozzle – 2.0 mm	1
MZ322-0522X	4660335052C	L3080	Nozzle – 2.0 mm (10 pack)	10
MZ322-0022	46603350522-2.2	L282	Nozzle – 2.2 mm	1
MZ322-0022X	46603350522-2.2	L30282	Nozzle – 2.2 mm (10 pack)	10
MZ322-0525-2.5	46603350525	L124	Nozzle – 2.5 mm	1
MZ322-0025X	46603350525	L30124	Nozzle – 2.5 mm (10 pack)	10
MZ322-0530-3.0	46603350530	L150	Nozzle – 3.0 mm	1
MZ322-0030X	46603350530	L30150	Nozzle – 3.0 mm (10 pack)	10
MZ322-0530-3.5	46603350530-3.5	L708	Nozzle – 3.5 mm	1
MZ322-1035X	46603350530-3.5	L30708	Nozzle – 3.5 mm (10 pack)	10
MZ322-0530-4.0	46603350530-4.0	L709	Nozzle – 4.0 mm	1
MZ322-1040X	46603350530-4.0	L30709	Nozzle – 4.0 mm (10 pack)	10
MZ322-1045	46603350530-4.5	L710	Nozzle – 4.5 mm	1
MZ322-1045X	46603350530-4.5	L30710	Nozzle – 4.5 mm (10 pack)	10
MZ322-1050	46603350530-5.0	L711	Nozzle – 5.0 mm	1
MZ322-1050X	46603350530-5.0	L30711	Nozzle – 5.0 mm (10 pack)	10



**Consumables**

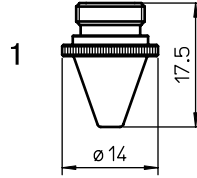
Centricut part number	Reference number	Alternate reference	Description	Pkg qty
MZ322-0008CP	46603350508	L78X	Nozzle – 0.8 mm CP	1
MZ322-0008CPX	46603350508	L3078X	Nozzle – 0.8 mm CP (10 pack)	10
MZ322-0511CP	46603350511	L69X	Nozzle – 1.0 mm CP	1
MZ322-0511CPX	46603350511	L3069X	Nozzle – 1.0 mm CP (10 pack)	10
MZ322-0512CP	46603350512	L77X	Nozzle – 1.2 mm CP	1
MZ322-0512CPX	46603350512	L3077X	Nozzle – 1.2 mm CP (10 pack)	10
MZ322-0520CP	4660335052B	L127X	Nozzle – 1.5 mm CP	1
PT322-0520CPX	4660335052B	L30127X	Nozzle – 1.5 mm CP (10 pack)	10
MZ322-1517CP	46603350517	L79X	Nozzle – 1.7 mm CP	1
MZ322-1517CPX	46603350517	L3079X	Nozzle – 1.7 mm CP (10 pack)	10
MZ322-0517CP	46603350517-1.8	L281X	Nozzle – 1.8 mm CP	1
MZ322-0517CPX	46603350517-1.8	L30281X	Nozzle – 1.8 mm CP (10 pack)	10
MZ322-0522CP	4660335052C	L80X	Nozzle – 2.0 mm CP	1
MZ322-0522CPX	4660335052C	L3080X	Nozzle – 2.0 mm CP (10 pack)	10
MZ322-0022CP	46603350522-2.2	L282X	Nozzle – 2.2 mm CP	1
MZ322-0022CPX	46603350522-2.2	L30282X	Nozzle – 2.2 mm CP (10 pack)	10
MZ322-0025CP	46603350525	L124X	Nozzle – 2.5 mm CP	1
MZ322-0025CPX	46603350525	L30124X	Nozzle – 2.5 mm CP (10 pack)	10
MZ322-0030CP	46603350530	L150X	Nozzle – 3.0 mm CP	1
MZ322-0030CPX	46603350530	L30150X	Nozzle – 3.0 mm CP (10 pack)	10
MZ322-1035CP	46603350530-3.5	L708X	Nozzle – 3.5 mm CP	1
MZ322-1035CPX	46603350530-3.5	L30708X	Nozzle – 3.5 mm CP (10 pack)	10
MZ322-1040CP	46603350530-4.0	L709X	Nozzle – 4.0 mm CP	1
MZ322-1040CPX	46603350530-4.0	L30709X	Nozzle – 4.0 mm CP (10 pack)	10
MZ322-1045CP	46603350530-4.5	L710X	Nozzle – 4.5 mm CP	1
MZ322-1045CPX	46603350530-4.5	L30710X	Nozzle – 4.5 mm CP (10 pack)	10
MZ322-1050CP	46603350530-5.0	L711X	Nozzle – 5.0 mm CP	1
MZ322-1050CPX	46603350530-5.0	L30711X	Nozzle – 5.0 mm CP (10 pack)	10



**Consumables**

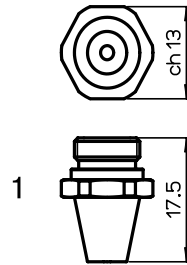
Centricut part number	Reference number	Alternate reference	Description	Pkg qty
MZ346-0001	Centricut design	L615	Nozzle – 1.0 mm double	1
MZ346-0001X	Centricut design	L30615	Nozzle – 1.0 mm double (10 pack)	10
MZ346-0002	Centricut design	L616	Nozzle – 1.2 mm double	1
MZ346-0002X	Centricut design	L30616	Nozzle – 1.2 mm double (10 pack)	10
MZ346-0003	Centricut design	L617	Nozzle – 1.5 mm double	1
MZ346-0003X	Centricut design	L30617	Nozzle – 1.5 mm double (10 pack)	10
MZ346-0004	Centricut design	L618	Nozzle – 1.7 mm double	1
MZ346-0004X	Centricut design	L30618	Nozzle – 1.7 mm double (10 pack)	10
MZ346-0005	Centricut design	L619	Nozzle – 1.8 mm double	1
MZ346-0005X	Centricut design	L30619	Nozzle – 1.8 mm double (10 pack)	10
MZ346-0006	Centricut design	L620	Nozzle – 2.0 mm double	1
MZ346-0006X	Centricut design	L30620	Nozzle – 2.0 mm double (10 pack)	10
MZ346-0007	Centricut design	L621	Nozzle – 2.2 mm double	1
MZ346-0007X	Centricut design	L30621	Nozzle – 2.2 mm double (10 pack)	10
MZ346-0008	Centricut design	L622	Nozzle – 2.5 mm double	1
MZ346-0008X	Centricut design	L30622	Nozzle – 2.5 mm double (10 pack)	10
MZ346-0009	Centricut design	L623	Nozzle – 3.0 mm double	1
MZ346-0009X	Centricut design	L30623	Nozzle – 3.0 mm double (10 pack)	10
MZ346-0001CP	Centricut design	L615X	Nozzle – 1.0 mm CP double	1
MZ346-0001CPX	Centricut design	L30615X	Nozzle – 1.0 mm CP double (10 pack)	10
MZ346-0002CP	Centricut design	L616X	Nozzle – 1.2 mm CP double	1
MZ346-0002CPX	Centricut design	L30616X	Nozzle – 1.2 mm CP double (10 pack)	10
MZ346-0003CP	Centricut design	L617X	Nozzle – 1.5 mm CP double	1
MZ346-0003CPX	Centricut design	L30617X	Nozzle – 1.5 mm CP double (10 pack)	10
MZ346-0004CP	Centricut design	L618X	Nozzle – 1.7 mm CP double	1
MZ346-0004CPX	Centricut design	L30618X	Nozzle – 1.7 mm CP double (10 pack)	10
MZ346-0005CP	Centricut design	L619X	Nozzle – 1.8 mm CP double	1
MZ346-0005CPX	Centricut design	L30619X	Nozzle – 1.8 mm CP double (10 pack)	10
MZ346-0006CP	Centricut design	L620X	Nozzle – 2.0 mm CP double	1
MZ346-0006CPX	Centricut design	L30620X	Nozzle – 2.0 mm CP double (10 pack)	10
MZ346-0007CP	Centricut design	L621X	Nozzle – 2.2 mm CP double	1
MZ346-0007CPX	Centricut design	L30621X	Nozzle – 2.2 mm CP double (10 pack)	10
MZ346-0008CP	Centricut design	L622X	Nozzle – 2.5 mm CP double	1
MZ346-0008CPX	Centricut design	L30622X	Nozzle – 2.5 mm CP double (10 pack)	10
MZ346-0009CP	Centricut design	L623X	Nozzle – 3.0 mm CP double	1
MZ346-0009CPX	Centricut design	L30623X	Nozzle – 3.0 mm CP double (10 pack)	10

Centricut is a registered trademark of Hypertherm, Inc. and may be registered in the United States and/or other countries. All other trademarks are the properties of their respective owners. Centricut is in no way affiliated with Mazak.



**Consumables**

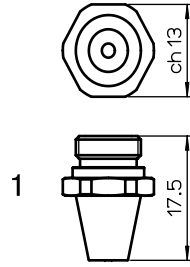
Centricut part number	Reference number	Alternate reference	Description	Pkg qty
MZ321-0521-0.8	46603350521	L266	Nozzle – 0.8 mm	1
MZ321-0008X	46603350521	L30266	Nozzle – 0.8 mm (10 pack)	10
MZ321-0521-1.0	46603350521	L250	Nozzle – 1.0 mm	1
MZ321-0010X	46603350521	L30250	Nozzle – 1.0 mm (10 pack)	10
MZ321-0521-1.2	46603350521	L251	Nozzle – 1.2 mm	1
MZ321-0012X	46603350521	L30251	Nozzle – 1.2 mm (10 pack)	10
MZ321-0520-1.5	46603350520	L252	Nozzle – 1.5 mm	1
MZ321-0520X	46603350520	L30252	Nozzle – 1.5 mm (10 pack)	10
MZ321-0521-1.7	46603350521	L253	Nozzle – 1.7 mm	1
MZ321-0017X	46603350521	L30253	Nozzle – 1.7 mm (10 pack)	10
MZ321-0522-2.0	46603350522	L254	Nozzle – 2.0 mm	1
MZ321-0054X	46603350522	L30254	Nozzle – 2.0 mm (10 pack)	10
MZ321-0522-2.5	46603350522	L770	Nozzle – 2.5 mm	1
MZ321-1025X	46603350522	L30770	Nozzle – 2.5 mm (10 pack)	10
MZ321-0522-3.0	46683301281	L771	Nozzle – 3.0 mm	1
MZ321-1030X	46683301281	L30771	Nozzle – 3.0 mm (10 pack)	10
MZ321-0008CP	46603350521	L266X	Nozzle – 0.8 mm CP	1
MZ321-0008CPX	46603350521	L30266X	Nozzle – 0.8 mm CP (10 pack)	10
MZ321-0010CP	46603350521	L250X	Nozzle – 1.0 mm CP	1
MZ321-0010CPX	46603350521	L30250X	Nozzle – 1.0 mm CP (10 pack)	10
MZ321-521-1.2CP	46603350521	L251X	Nozzle – 1.2 mm CP	1
MZ321-0012CPX	46603350521	L30251X	Nozzle – 1.2 mm CP (10 pack)	10
MZ321-520-1.5CP	46603350520	L252X	Nozzle – 1.5 mm CP	1
MZ321-0520CPX	46603350520	L30252X	Nozzle – 1.5 mm CP (10 pack)	10
MZ321-0017CP	46603350521	L253X	Nozzle – 1.7 mm CP	1
MZ321-0017CPX	46603350521	L30253X	Nozzle – 1.7 mm CP (10 pack)	10
MZ321-522-2.0CP	46603350522	L254X	Nozzle – 2.0 mm CP	1
MZ321-0054CPX	46603350522	L30254X	Nozzle – 2.0 mm CP (10 pack)	10
MZ321-522-2.5CP	46603350522	L770X	Nozzle – 2.5 mm CP	1
MZ321-1025CPX	46603350522	L30770X	Nozzle – 2.5 mm CP (10 pack)	10
MZ321-522-3.0CP	46683301281	L771X	Nozzle – 3.0 mm CP	1
MZ321-1030CPX	46683301281	L30771X	Nozzle – 3.0 mm CP (10 pack)	10



**Consumables**

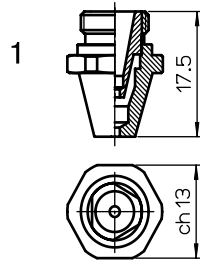
Centricut part number	Reference number	Alternate reference	Description	Pkg qty
MZ385-0508	46603350508	L725	Nozzle – 0.8 mm hex	1
MZ385-0508X	46603350508	L30725	Nozzle – 0.8 mm hex (10 pack)	10
MZ385-0511	46603350511	L726	Nozzle – 1.0 mm hex	1
MZ385-0511X	46603350511	L30726	Nozzle – 1.0 mm hex (10 pack)	10
MZ385-5052	4660335052A	L727	Nozzle – 1.2 mm hex	1
MZ385-5052X	4660335052A	L30727	Nozzle – 1.2 mm hex (10 pack)	10
MZ385-5052B	4660335052B	L728	Nozzle – 1.5 mm hex	1
MZ385-5052BX	4660335052B	L30728	Nozzle – 1.5 mm hex (10 pack)	10
MZ385-0517	46603350517	L729	Nozzle – 1.7 mm hex	1
MZ385-0517X	46603350517	L30729	Nozzle – 1.7 mm hex (10 pack)	10
MZ385-517	46603350517-1.8	L730	Nozzle – 1.8 mm hex	1
MZ385-517X	46603350517-1.8	L30730	Nozzle – 1.8 mm hex (10 pack)	10
1 MZ385-5052C	4660335052C	L731	Nozzle – 2.0 mm hex	1
MZ385-5052CX	4660335052C	L30731	Nozzle – 2.0 mm hex (10 pack)	10
MZ385-0522	46603350522-2.2	L732	Nozzle – 2.2 mm hex	1
MZ385-0522X	46603350522-2.2	L30732	Nozzle – 2.2 mm hex (10 pack)	10
MZ385-0003	4660335052D	L733	Nozzle – 2.5 mm hex	1
MZ385-0003X	4660335052D	L30733	Nozzle – 2.5 mm hex (10 pack)	10
MZ385-1003	46603350530	L734	Nozzle – 3.0 mm hex	1
MZ385-1003X	46603350530	L30734	Nozzle – 3.0 mm hex (10 pack)	10
MZ385-0030	46603350530-3.5	L735	Nozzle – 3.5 mm hex	1
MZ385-0030X	46603350530-3.5	L30735	Nozzle – 3.5 mm hex (10 pack)	10
MZ385-0530	46603350530-4.0	L736	Nozzle – 4.0 mm hex	1
MZ385-0530X	46603350530-4.0	L30736	Nozzle – 4.0 mm hex (10 pack)	10
MZ385-530	46603350530-4.5	L737	Nozzle – 4.5 mm hex	1
MZ385-530X	46603350530-4.5	L30737	Nozzle – 4.5 mm hex (10 pack)	10





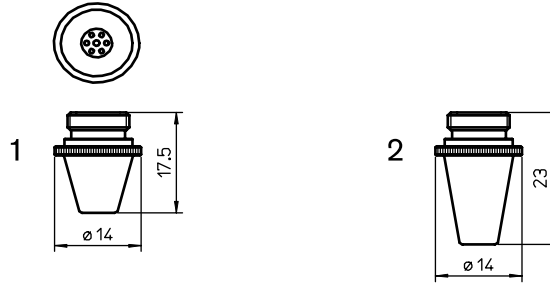
**Consumables**

Centricut part number	Reference number	Alternate reference	Description	Pkg qty
MZ385-0508CP	46603350508	L725X	Nozzle – 0.8 mm hex CP	1
MZ385-0508CPX	46603350508	L30725X	Nozzle – 0.8 mm hex CP (10 pack)	10
MZ385-0511CP	46603350511	L726X	Nozzle – 1.0 mm hex CP	1
MZ385-0511CPX	46603350511	L30726X	Nozzle – 1.0 mm hex CP (10 pack)	10
MZ385-5052CP	4660335052A	L727X	Nozzle – 1.2 mm hex CP	1
MZ385-5052CPX	4660335052A	L30727X	Nozzle – 1.2 mm hex CP (10 pack)	10
MZ385-052CP	4660335052B	L728X	Nozzle – 1.5 mm hex CP	1
MZ385-052CPX	4660335052B	L30728X	Nozzle – 1.5 mm hex CP (10 pack)	10
MZ385-0517CP	46603350517	L729X	Nozzle – 1.7 mm hex CP	1
MZ385-0517CPX	46603350517	L30729X	Nozzle – 1.7 mm hex CP (10 pack)	10
MZ385-517CP	46603350517-1.8	L730X	Nozzle – 1.8 mm hex CP	1
MZ385-517CPX	46603350517-1.8	L30730X	Nozzle – 1.8 mm hex CP (10 pack)	10
MZ385-0052CP	4660335052C	L731X	Nozzle – 2.0 mm hex CP	1
MZ385-0052CPX	4660335052C	L30731X	Nozzle – 2.0 mm hex CP (10 pack)	10
MZ385-0522CP	46603350522-2.2	L732X	Nozzle – 2.2 mm hex CP	1
MZ385-0522CPX	46603350522-2.2	L30732X	Nozzle – 2.2 mm hex CP (10 pack)	10
MZ385-0003CP	4660335052D	L733X	Nozzle – 2.5 mm hex CP	1
MZ385-0003CPX	4660335052D	L30733X	Nozzle – 2.5 mm hex CP (10 pack)	10
MZ385-1003CP	46603350530	L734X	Nozzle – 3.0 mm hex CP	1
MZ385-1003CPX	46603350530	L30734X	Nozzle – 3.0 mm hex CP (10 pack)	10
MZ385-0030CP	46603350530-3.5	L735X	Nozzle – 3.5 mm hex CP	1
MZ385-0030CPX	46603350530-3.5	L30735X	Nozzle – 3.5 mm hex CP (10 pack)	10
MZ385-0530CP	46603350530-4.0	L736X	Nozzle – 4.0 mm hex CP	1
MZ385-0530CPX	46603350530-4.0	L30736X	Nozzle – 4.0 mm hex CP (10 pack)	10
MZ385-530CP	46603350530-4.5	L737X	Nozzle – 4.5 mm hex CP	1
MZ385-530CPX	46603350530-4.5	L30737X	Nozzle – 4.5 mm hex CP (10 pack)	10



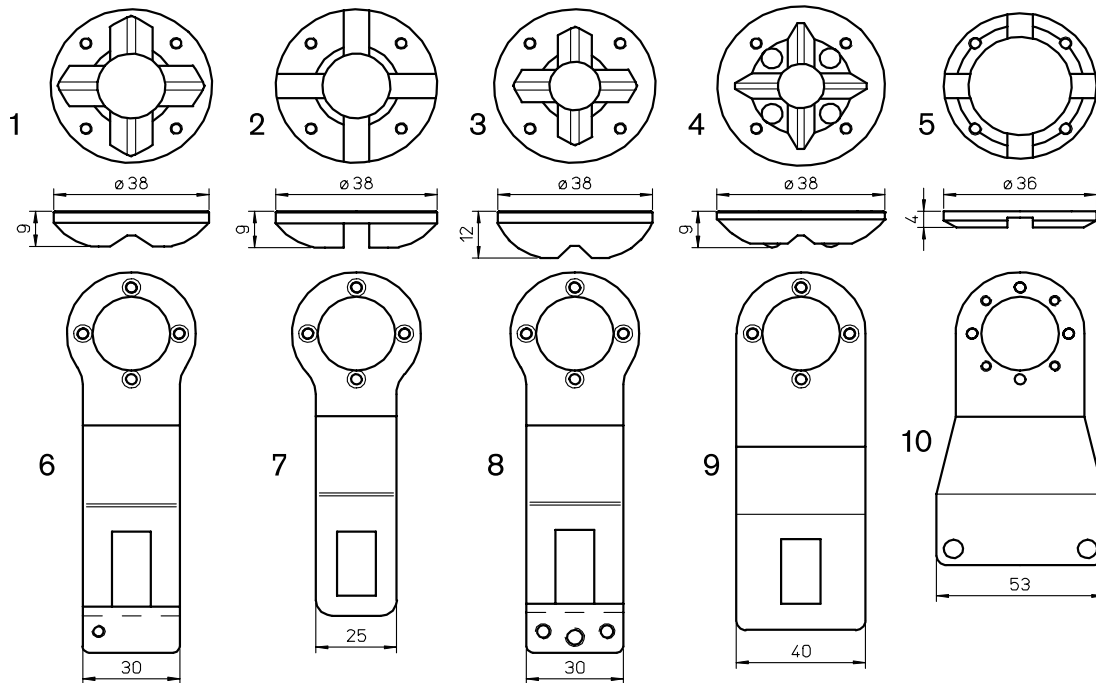
**Consumables**

Centricut part number	Reference number	Alternate reference	Description	Pkg qty
MZ419-0001		L1223	Nozzle – 1.2 mm double hex	1
MZ419-0001X		L301223	Nozzle – 1.2 mm double hex (10 pack)	10
MZ419-0002		L1224	Nozzle – 1.5 mm double hex	1
MZ419-0002X		L301224	Nozzle – 1.5 mm double hex (10 pack)	10
MZ419-0003		L1225	Nozzle – 1.8 mm double hex	1
MZ419-0003X		L301225	Nozzle – 1.8 mm double hex (10 pack)	10
MZ419-0004		L1226	Nozzle – 2.0 mm double hex	1
MZ419-0004X		L301226	Nozzle – 2.0 mm double hex (10 pack)	10
MZ419-0005		L1227	Nozzle – 2.2 mm double hex	1
MZ419-0005X		L301227	Nozzle – 2.2 mm double hex (10 pack)	10
MZ419-0006		L1228	Nozzle – 2.5 mm double hex	1
MZ419-0006X		L301228	Nozzle – 2.5 mm double hex (10 pack)	10
MZ419-0007		L1229	Nozzle – 3.0 mm double hex	1
MZ419-0007X		L301229	Nozzle – 3.0 mm double hex (10 pack)	10
1 MZ419-0001CP		L1223X	Nozzle – 1.2 mm double hex CP	1
MZ419-0001CPX		L301223X	Nozzle – 1.2 mm double hex CP (10 pack)	10
MZ419-0002CP		L1224X	Nozzle – 1.5 mm double hex CP	1
MZ419-0002CPX		L301224X	Nozzle – 1.5 mm double hex CP (10 pack)	10
MZ419-0003CP		L1225X	Nozzle – 1.8 mm double hex CP	1
MZ419-0003CPX		L301225X	Nozzle – 1.8 mm double hex CP (10 pack)	10
MZ419-0004CP		L1226X	Nozzle – 2.0 mm double hex CP	1
MZ419-0004CPX		L301226X	Nozzle – 2.0 mm double hex CP (10 pack)	10
MZ419-0005CP		L1227X	Nozzle – 2.2 mm double hex CP	1
MZ419-0005CPX		L301227X	Nozzle – 2.2 mm double hex CP (10 pack)	10
MZ419-0006CP		L1228X	Nozzle – 2.5 mm double hex CP	1
MZ419-0006CPX		L301228X	Nozzle – 2.5 mm double hex CP (10 pack)	10
MZ419-0007CP		L1229X	Nozzle – 3.0 mm double hex CP	1
MZ419-0007CPX		L301229X	Nozzle – 3.0 mm double hex CP (10 pack)	10



**Consumables**

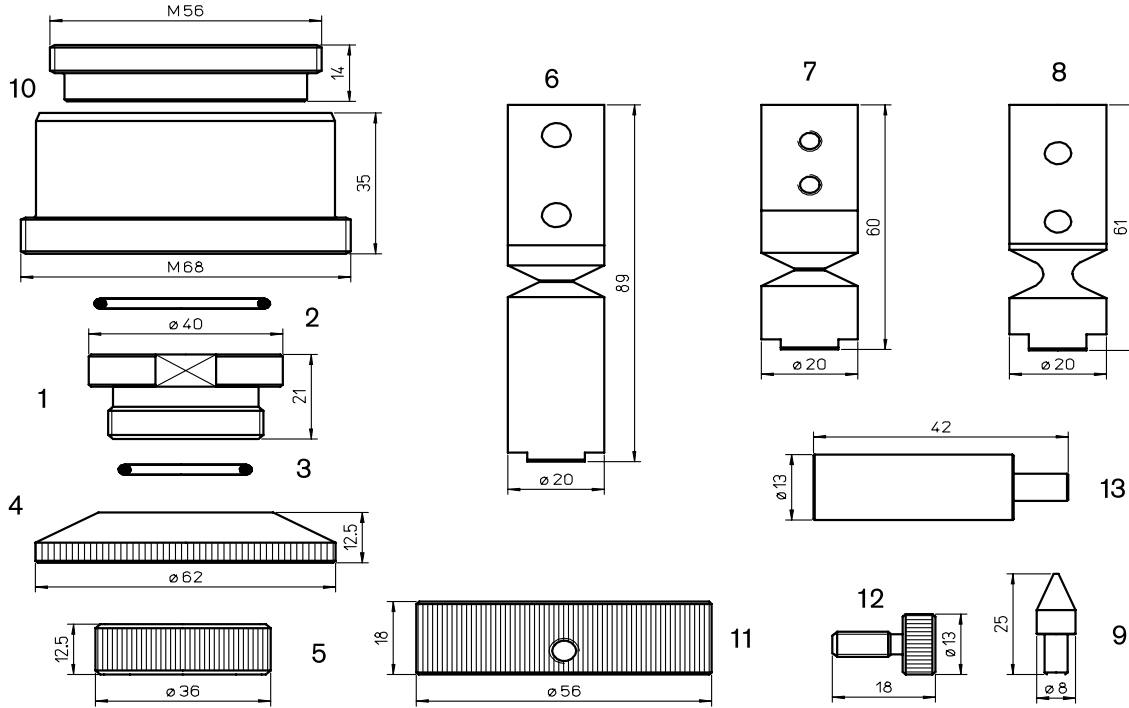
Centricut part number	Reference number	Alternate reference	Description	Pkg qty
MZ322-0523	46603350523	L492	Shower nozzle – 1.0 mm	1
1 MZ322-0523-1.5		L493	Shower nozzle – 1.5 mm	1
MZ322-0523-2.0		L497	Shower nozzle – 2.0 mm	1
MZ322-0001		L284	Nozzle – 2.0 mm long	1
MZ332-0002		L285	Nozzle – 2.5 mm long	1
MZ332-0003		L286	Nozzle – 3.0 mm long	1
2 MZ322-0015CP		L373X	Nozzle – 1.5 mm CP long	1
MZ322-0001CP		L284X	Nozzle – 2.0 mm CP long	1
MZ332-0002CP		L285X	Nozzle – 2.5 mm CP long	1
MZ332-0003CP		L286X	Nozzle – 3.0 mm CP long	1



**Consumables**

Centricut part number	Reference number	Alternate reference	Description	Pkg qty
MZ309-5080	46602350080	AL10	Stylus foot H9 – brass	1
<b>1</b> MZ309-5080CP		AL145	Stylus foot H9 – brass CP	1
MZ309-1043	46572301043	AL15	Stylus foot H9 – steel	1
MZ309-1045	46572301045	AL16	Stylus foot H9 – Teflon <sup>®</sup>	1
MZ309-0001		AL132	Stylus foot H9 – brass	1
<b>2</b> MZ309-0001CP		AL146	Stylus foot H9 – brass CP	1
MZ309-0004		AL133	Stylus foot H9 – (steel)	1
MZ309-1041	46572301041	AL17	Stylus foot H12 – brass	1
<b>3</b> MZ309-1041CP		AL147	Stylus foot H12 – brass CP	1
MZ309-1042	46572301042	AL59	Stylus foot H12 – steel	1
MZ309-1041T	46572301041	AL18	Stylus foot H12 – Teflon <sup>®</sup>	1
<b>4</b> MZ309-0003		AL39	Stylus foot – H9 brass w/ball bearing	1
<b>5</b> MZ309-0520	46512300520	AL117	Stylus foot H4 – brass	1
<b>6</b> MZ309-0005		AL64	Stylus arm w/screw M4	1
MZ309-0580	36602300580	AL66	Stylus arm w/screw M6	1
<b>7</b> MZ309-0560	36602300560, 36682300050	AL60	Stylus arm	1
<b>8</b> MZ309-0281	36682300281	AL167	Stylus arm	1
<b>9</b> MZ309-0020	36602350020	AL168	Stylus arm – large offset	1
<b>10</b> MZ309-0250	46522300250	AL169	Stylus arm	1
<b>MZ309-001</b> (not shown)			<b>Screws for stylus feet</b>	<b>10</b>

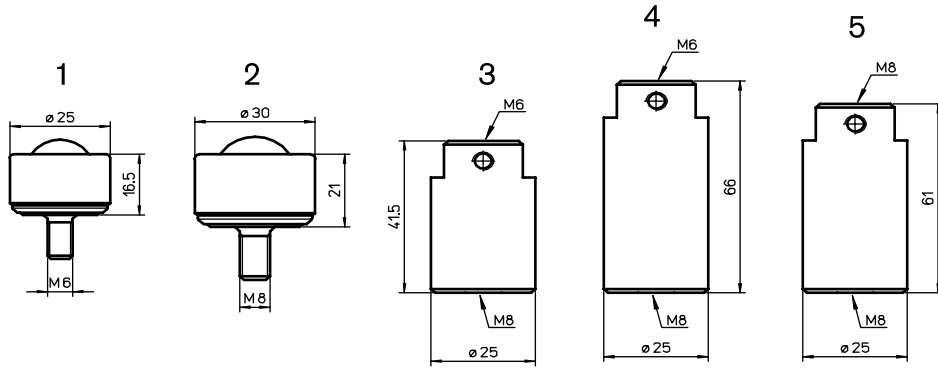
**New items shown in bold**



**Consumables**

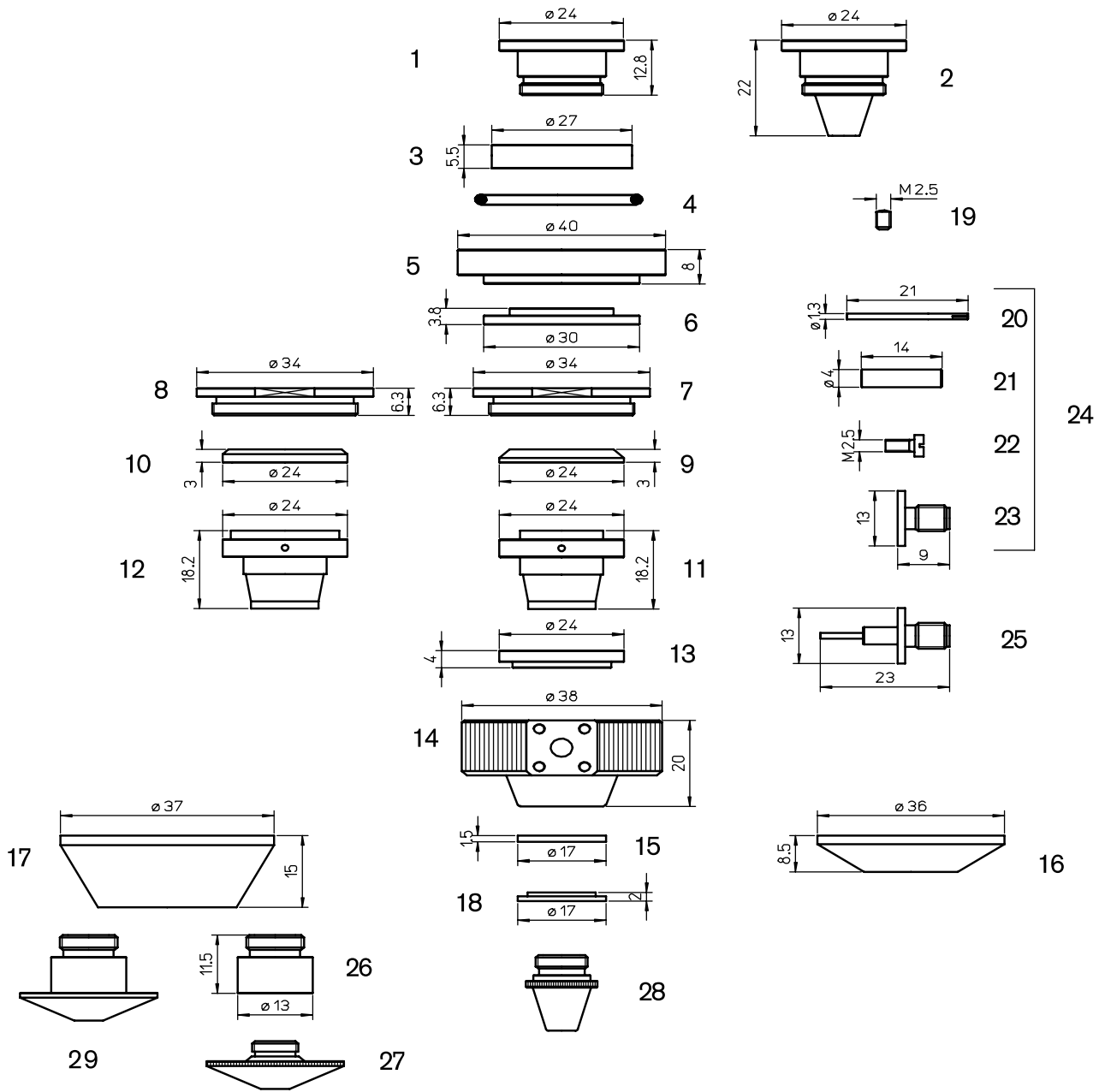
Centricut part number	Reference number	Alternate reference	Description	Pkg qty
1 MZ309-0080	46523300080	AL63	Base	1
2 MZ309-3200	J2600S03200	AL97	O-ring external base	1
3 MZ309-2200	J2600S02200	AL98	O-ring internal base	1
4 MZ309-0030	46683300030	AL57	Retainer	1
5 MZ309-1720	46583301720	AL13	Retainer nut	1
6 MZ309-0550	36602300230	AL12	Break-away bar L89-M8	1
7 MZ309-0280	36682300280	AL14	Break-away bar L60-M8	1
8 MZ309-0101	36572300101	AL121	Break-away bar L61-M6	1
9 MZ309-0013	46600030013	AL20	Table pin	1
10 MZ309-309-1		AL106	Housing for 2.0" lens	1
11 MZ335-0930	46683300930	AL153	Ring	1
MZ335-0003		AL166	Ring kit	1
12 MZ335-0320	46683300032	AL152	Bolt M5 x 0.5	1
13 MZ335-0008	46522300242	AL186	Stylus pin	1
MZ335-115 (not shown)		AL1115/M	Indium wire, .8 mm X 125 mm (1.5" lens)	1
MZ335-120 (not shown)		AL1120/M	Indium wire, .8 mm X 160 mm (2.0" lens)	1
<b>MZ427-0230 (not shown)</b>	<b>Z50MB000230</b>		<b>Indium wire, 7.6mm (.030") x 6' length</b>	<b>1</b>

**New items shown in bold**



**Consumables**

Centricut part number	Reference number	Alternate reference	Description	Pkg qty
1 MZ309-Z580	Z21KV000580	AL61	Roller ball – 25 mm – M6	1
MZ309-Z580X	Z21KV000580	AL3061	Roller ball (10 pack)	10
2 MZ309-1160	Z21ZZ001160	AL210	Roller ball – 30 mm – M8	1
3 MZ309-0321	46575100321	AL62	Stainless steel block – 41.5 mm	1
4 MZ309-0050	46705100050	AL134	Stainless steel block- L66	1
5 MZ309-0324		AL324	Stainless steel block	1



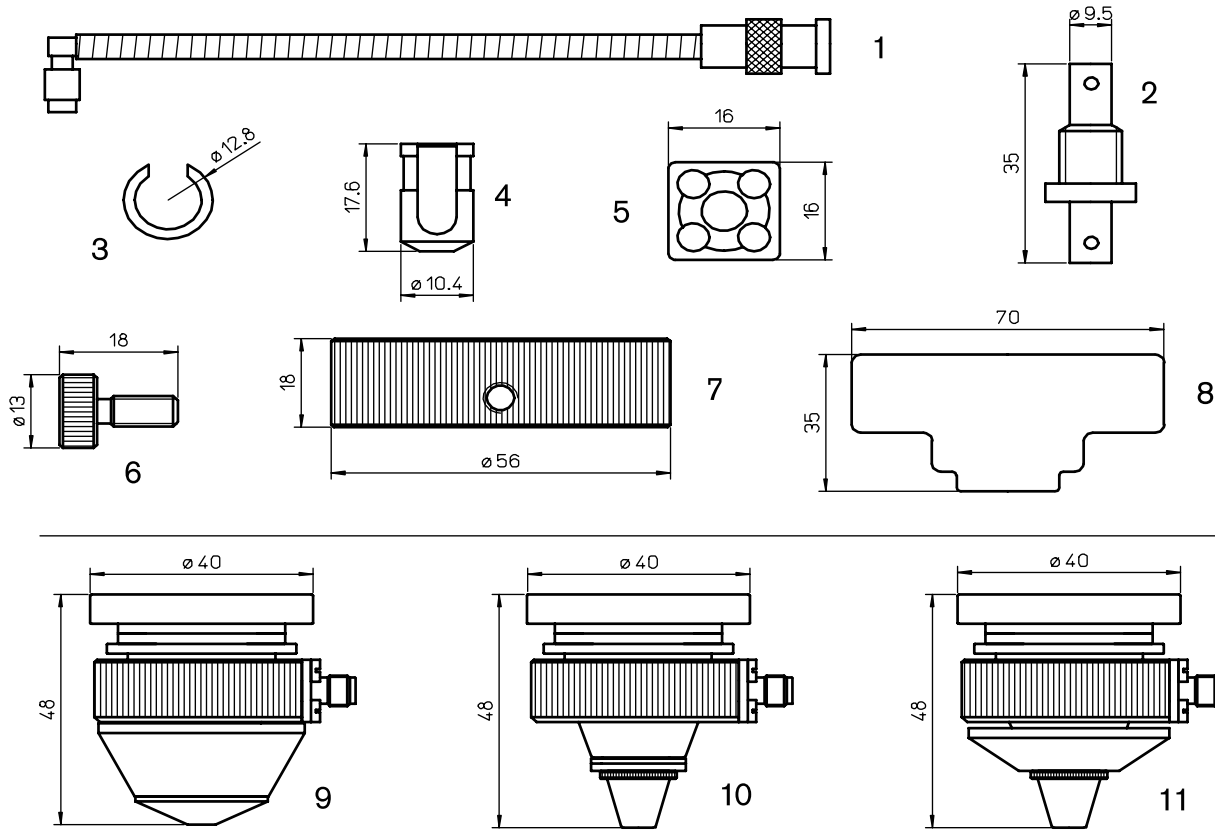
**Consumables**

Centricut part number	Reference number	Alternate reference	Description	Pkg qty
1 MZ335-1110	46683301110	AL74	Central copper body	1
2 MZ335-0100	Centricut design	AL112	Central copper body	1
MZ335-1080	46683301080	AL80	Teflon <sup>®</sup> spacer 27x5.5	1
3 MZ335-1080P	46683301080	AL80/P	Special spacer 27x5.5 – plastic	1
MZ335-1080C	46683301080	AL280	Ceramic spacer 27x5.5	1
4 MZ309-3200	J2600S03200	AL97	O-ring external base – rubber	1
5 MZ335-1070	46683301070	AL84	Brass base	1
MZ335-1090	46683301090	AL79	Teflon <sup>®</sup> spacer 30x4	1
6 MZ335-0090C	46683301090	AL79/P	Special spacer 30x4 – plastic	1
MZ335-1090C	46683301090	AL279	Ceramic spacer 30x4	1
7 MZ335-1100	46683301100	AL83	Copper nut	1
8 MZ335-1101	46773300510	AL376	Copper nut	1

**Consumables**

Centricut part number	Reference number	Alternate reference	Description	Pkg qty
MZ335-1120	46683301120	AL77	Teflon <sup>®</sup> spacer 24x3	1
9 MZ335-1120LL	46683301120	AL77/P	Special spacer 24x3 – plastic	1
MZ335-1120C	46683301120	AL277	Ceramic spacer 24x3	1
10 MZ335-0710	46773300710	AL377	Cermic spacer 24x3	1
11 MZ335-0850	46683300850	AL75	Copper nozzle holder	1
12 MZ335-0720	46773300720	AL253	Copper nozzle holder	1
MZ335-1130	46683301130	AL78	Teflon spacer 24x4	1
13 MZ335-1130LL	46683301130	AL78/P	Special spacer 24x4 – plastic	1
MZ335-1130C	46683301130	AL278	Ceramic spacer 24x4	1
14 MZ335-1140	46683301140	AL73	Aluminum body	1
15 MZ335-1150	46683301150	AL81	Teflon <sup>®</sup> spacer 17x1.5	1
MZ335-1930	46683301930	AL111	Teflon <sup>®</sup> protection	1
16 MZ335-1930LL	46683301930	AL111/P	Special protection – plastic	1
MZ335-0009	46683301930	AL275	Ceramic protection	1
17 MZ335-1841	46683301841	AL118	Teflon <sup>®</sup> spacer	1
18 MZ335-1160	46683301160	AL82	Copper ring 17x2	1
19 MZ335-1180	46683301180	AL119	Screw for contact	1
20 MZ335-1170	46683301170	AL76	Contact	1
21 MZ335-0030	46683300030	AL88	Connecting teflon pipe	1
22 MZ335-0000	46683300000	AL127	Screw for connectors (4 PCS)	1
23 MZ335-1113		AL113	Connector	1
24 MZ335-0001	46683301170	AL154	Kit connector (AL76-88-127-113)	1
25 MZ335-0001A		AL213	Connector assembly	1
26 MZ335-1830	46683301830	AL128	Adaptor	1
27	Please refer to the Trumpf nozzle section			
28	Please refer to the Mazak nozzle section			
29	Please refer to the Mazak nozzle section			

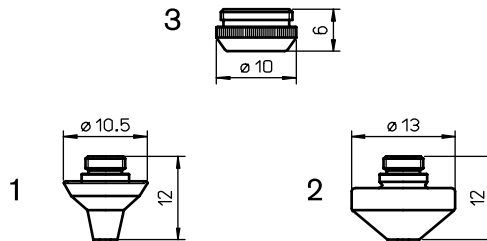




**Consumables**

Centricut part number	Reference number	Alternate reference	Description	Pkg qty	
1	MZ335-1980	46683301980	AL103	Connecting cable – sensor head (28 cm)	1
	MZ335-1330	46683301330	AL103/S	Connecting cable – sensor head (31 cm)	1
2	MZ335-0005		AL104	Cable adaptor	1
3	MZ335-1870	46683301870	AL155	Cover clips – Teflon <sup>®</sup>	1
4	MZ335-1860	46683301860	AL156	Cable connector cover – Teflon <sup>®</sup>	1
	MZ335-1860LL	46683301860	AL156/P	Cable connector cover long life plastic	1
5	MZ335-1850	46683301850	AL157	Connector cover – Teflon <sup>®</sup>	1
	MZ335-1850P	46683301850	AL157/P	Connector cover long life – plastic	1
6	MZ335-0320	46683300032	AL152	Mild steel bolt M5 X 0.5	1
7	MZ335-0930	46683300930	AL153	Ring	1
	MZ335-0003		AL166	Ring kit – M2335-0930 and 4 X M2335-0320	1
8	MZ335-1230	46683301230	AL165	Plate	1
	MZ335-0002		TMA10	Head w/Teflon <sup>®</sup> spacer	1
9	MZ335-0012		TMA10/P	Head w/long life spacer	1
	MZ335-1013		TMA10/C	Head w/ceramic spacer	1
	MZ335-1014		TMA20	Head w/Teflon <sup>®</sup> spacer	1
10	MZ335-0015		TMA20/P	Head w/long life spacer	1
	MZ335-0016		TMA20/C	Head w/ceramic spacer	1
	MZ335-0017		TMA30	Head w/Teflon <sup>®</sup> spacer	1
11	MZ335-0018		TMA30/P	Head w/long life spacer	1
	MZ335-0019		TMA30/C	Head w/ceramic spacer	1

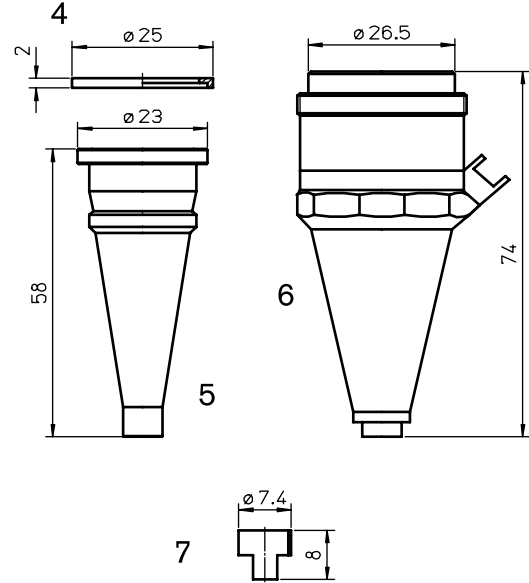
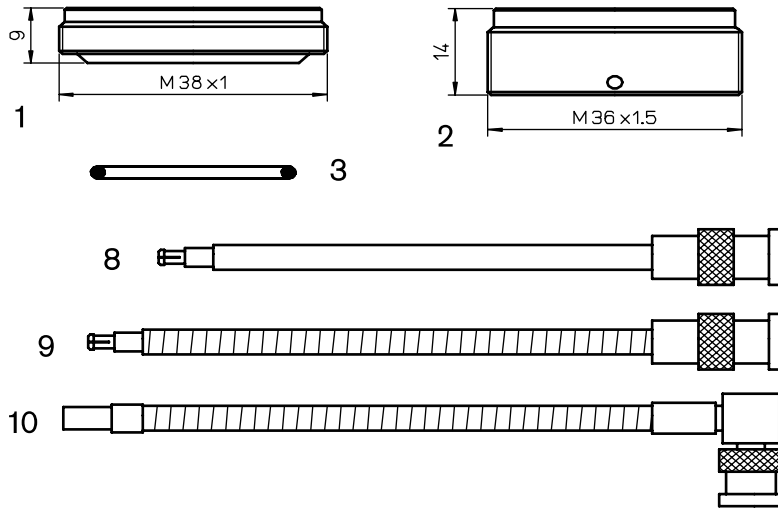
Mazak<sup>®</sup> 3D - Precitec<sup>®</sup> 5"C/MG - 5"H/MG



**Consumables**

Centricut part number	Reference number	Alternate reference	Description	Pkg qty
PT347-0005	46713300290-10	L554	Nozzle - 1.0 mm 3D	1
PT347-0005X	46713300290-10	L30554	Nozzle - 1.0 mm 3D (10 pack)	10
PT347-0290-1.2	46713300290-12	L555	Nozzle - 1.2 mm 3D	1
PT347-0090X	46713300290-12	L30555	Nozzle - 1.2 mm 3D (10 pack)	10
PT347-0290	46713300290-15, P0352-381-00015	L556	Nozzle - 1.5 mm 3D	1
PT347-0290X	46713300290-15, P0352-381-00015	L30556	Nozzle - 1.5 mm 3D (10 pack)	10
PT347-0118		L557	Nozzle - 1.8 mm 3D	1
PT347-0118X		L30557	Nozzle - 1.8 mm 3D (10 pack)	10
1 PT347-0280	46713300310, P0352-382-00020	L558	Nozzle - 2.0 mm 3D	1
PT347-0280X	46713300310, P0352-382-00020	L30558	Nozzle - 2.0 mm 3D (10 pack)	10
PT347-0001	46713300280-25	L560	Nozzle - 2.5 mm 3D	1
PT347-0001X	46713300280-25	L30560	Nozzle - 2.5 mm 3D (10 pack)	10
PT347-0002	46713300280-30, 46713300430	L563	Nozzle - 3.0 mm 3D	1
PT347-0002X	46713300280-30	L30563	Nozzle - 3.0 mm 3D (10 pack)	10
PT347-0035	46713300280-35	L564	Nozzle - 3.5 mm 3D	1
PT347-0035X	46713300280-35	L30564	Nozzle - 3.5 mm 3D (10 pack)	10
PT347-0004		L576	Nozzle - 1.0 mm 2D	1
PT347-0004X		L30576	Nozzle - 1.0 mm 2D (10 pack)	10
PT347-0310-1.2	46713300310	L577	Nozzle - 1.2 mm 2D	1
PT347-0012X	46713300310	L30577	Nozzle - 1.2 mm 2D (10 pack)	10
PT347-0310	P0352-386-00015	L578	Nozzle - 1.5 mm 2D	1
PT347-0310X	P0352-386-00015	L30578	Nozzle - 1.5 mm 2D (10 pack)	10
2 PT347-1018		L579	Nozzle - 1.8 mm 2D	1
PT-347-1018X		L30579	Nozzle - 1.8 mm 2D (10 pack)	10
PT347-0300	46713300300, P0352-387-00020	L580	Nozzle - 2.0 mm 2D	1
PT347-0300X	46713300300, P0352-387-00020	L30580	Nozzle - 2.0 mm 2D (10 pack)	10
PT347-0003	46713300300-25	L581	Nozzle - 2.5 mm 2D	1
PT347-0003X	46713300300-25	L30581	Nozzle - 2.5 mm 2D (10 pack)	10
PT347-0006	46713300300-30	L582	Nozzle - 3.0 mm 2D	1
PT347-0006X	46713300300-30	L30582	Nozzle - 3.0 mm 2D (10 pack)	10
3 PT347-0320	46713300321, P0352-311-00001	AL160	Union nut - Vespel <sup>®</sup>	1

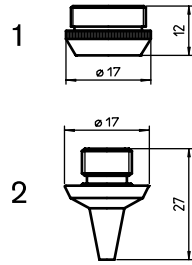
Mazak<sup>®</sup> 3D - Precitec<sup>®</sup> 5"C/MG - 5"H/MG



**Consumables**

Centricut part number	Reference number	Alternate reference	Description	Pkg qty	
1	PT347-4297	P0492-702-00001, 29100021	AL198	Insulating ring	1
2	PT347-0008	46713330200	AL218	Insulator 5-axis	1
3	AM326-6453	71366453	AL94	Outer nozzle o-ring	1
4	PT347-350	46713330960	AL350	Washes for cone	1
5	PT347-349	46713330930	AL349	Inner sensor cone	1
6	PT347-0007	P0354-110-00002/00001, P0354-130-00001	AL211	OEM nozzle body SE M2.5"HN2	1
7	PT347-0009		AL256	Insulator collar	1
8	PT347-0101	P0360-100-00500, 46713300100	AL204	Sensor cable 500 mm (OEM)	1
9	PT347-1386	281386, P0360-155-00500	AL257	Sensor cable	1
10	PT347-0181	46743300181	AL358	Sensor cable 317.5 mm	1
<b>MZ335-8290</b>			<b>Sensor cable 115 mm</b>	<b>1</b>	

New items shown in bold



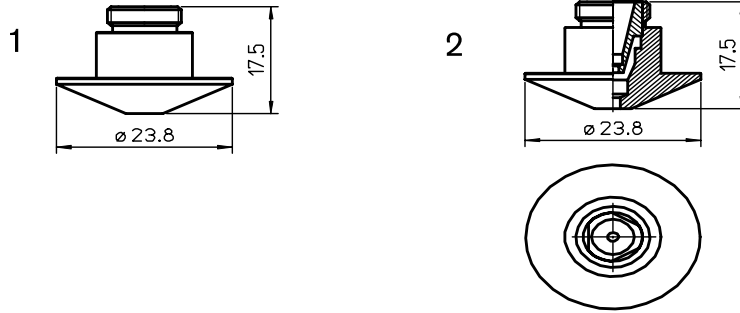
**Consumables**

	Centricut part number	Reference number	Alternate reference	Description	Pkg qty
1	MZ332-1280	46713331280	AL337	Nut – Vespel	
	MZ332-1305		L1300	Nozzle – 1.0 mm 3D	1
	MZ332-1320	46713331320	L1295	Nozzle – 1.2 mm 3D	1
	MZ332-1310	46713331310	L1296	Nozzle – 1.5 mm 3D	1
2	MZ332-1301		L1301	Nozzle – 1.8 mm 3D	1
	MZ332-1300	46713331300	L1297	Nozzle – 2.0 mm 3D	1
	MZ332-1330	46713331330	L1298	Nozzle – 2.5 mm 3D	1
	MZ332-1290	46713331290	L1299	Nozzle – 3.0 mm 3D	1



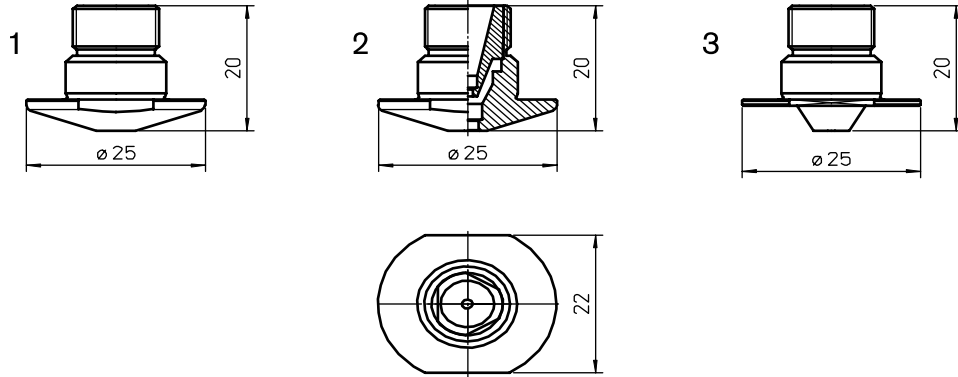
**Consumables**

	Centricut part number	Reference number	Alternate reference	Description	Pkg qty
	PT347-1005	281005, P0352-323-00010	L480	Nozzle – 1.0 mm ZK	1
	PT347-1005X	281005, P0352-323-00010	L30480	Nozzle – 1.0 mm ZK (10 pack)	10
	PT347-1034	281034, P0352-324-00012	L481	Nozzle – 1.2 mm ZK	1
	PT347-1034X	281034, P0352-324-00012	L30481	Nozzle – 1.2 mm ZK (10 pack)	10
	PT347-1013	281013, P0352-325-00015	L482	Nozzle – 1.5 mm ZK	1
1	PT347-1013X	281013, P0352-325-00015	L30482	Nozzle – 1.5 mm ZK (10 pack)	10
	PT347-0899	280899, P0352-326-00018	L483	Nozzle – 1.8 mm ZK	1
	PT347-0899X	280899, P0352-326-00018	L30483	Nozzle – 1.8 mm ZK (10 pack)	10
	PT347-0044-3	350044.3, P0352-327-00020	L484	Nozzle – 2.0 mm ZK	1
	PT347-0044X	350044.3, P0352-327-00020	L30484	Nozzle – 2.0 mm ZK (10 pack)	10
	PT347-1025	P0352-328-00025	L485	Nozzle – 2.5 mm ZK	1
	PT347-1025X	350044.3, P0352-328-00025	L30485	Nozzle – 2.5 mm ZK (10 pack)	10
	PT347-1006	281006, P0352-333-00010	L486	Nozzle – 1.0 mm KK	1
	PT347-1006X	281006, P0352-333-00010	L30486	Nozzle – 1.0 mm KK (10 pack)	10
	PT347-1030	281030, P0352-334-00012	L487	Nozzle – 1.2 mm KK	1
	PT347-1030X	281030, P0352-334-00012	L30487	Nozzle – 1.2 mm KK (10 pack)	10
2	PT347-1031	281031, P0352-335-00015	L488	Nozzle – 1.5 mm KK	1
	PT347-1031X	281031, P0352-335-00015	L30488	Nozzle – 1.5 mm KK (10 pack)	10
	PT347-0898	280898, P0352-336-00018	L489	Nozzle – 1.8 mm KK	1
	PT347-0898X	280898, P0352-336-00018	L30489	Nozzle – 1.8 mm KK (10 pack)	10
	PT347-1020	P0352.336.00020	L490	Nozzle – 2.0 mm KK	1
	PT347-1020X	P0352.336.00020	L30490	Nozzle – 2.0 mm KK (10 pack)	10



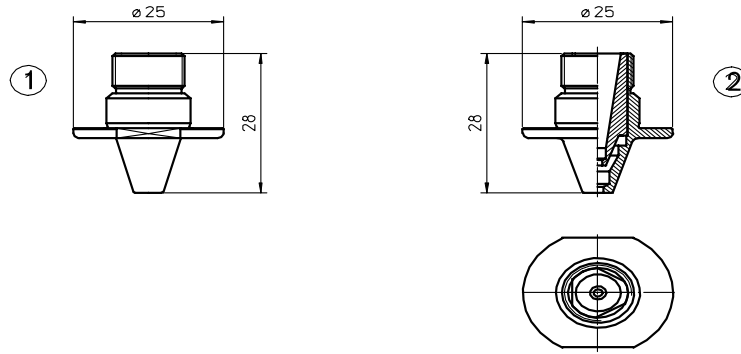
**Consumables**

Centricut part number	Reference number	Alternate reference	Description	Pkg qty
MZ335-0004		L428	Nozzle – 1.0 mm	1
MZ335-0011		L423	Nozzle – 1.2 mm	1
MZ335-1950	46683301950	L429	Nozzle – 1.5 mm	1
MZ335-1821	46683301821	L430	Nozzle – 2.0 mm	1
MZ335-0112		L471	Nozzle – 2.2 mm	1
MZ335-1960	46683301960	L431	Nozzle – 2.5 mm	1
MZ335-1970	46683301970	L432	Nozzle – 3.0 mm	1
MZ335-0006		L472	Nozzle – 3.5 mm	1
MZ335-0013		L473	Nozzle – 4.0 mm	1
MZ335-0014		L474	Nozzle – 4.5 mm	1
1 MZ335-0004CP		L428X	Nozzle – 1.0 mm CP	1
MZ335-0007CP		L423X	Nozzle – 1.2 mm CP	1
MZ335-1950CP	46683301950	L429X	Nozzle – 1.5 mm CP	1
MZ335-1821CP	46683301821	L430X	Nozzle – 2.0 mm CP	1
MZ335-0012CP		L471X	Nozzle – 2.2 mm CP	1
MZ335-1960CP	46683301960	L431X	Nozzle – 2.5 mm CP	1
MZ335-1970CP	46683301970	L432X	Nozzle – 3.0 mm CP	1
MZ335-0006CP		L472X	Nozzle – 3.5 mm CP	1
MZ335-0013CP		L473X	Nozzle – 4.0 mm CP	1
MZ335-0014CP		L474X	Nozzle – 4.5 mm CP	1
MZ360-0001	Centricut design	L850	Nozzle – 1.0 mm double	1
MZ360-0002	Centricut design	L851	Nozzle – 1.2 mm double	1
MZ360-0003	Centricut design	L852	Nozzle – 1.5 mm double	1
MZ360-0004	Centricut design	L858	Nozzle – 1.8 mm double	1
MZ360-0005	Centricut design	L853	Nozzle – 2.0 mm double	1
MZ360-0006	Centricut design	L849	Nozzle – 2.2 mm double	1
MZ360-0007	Centricut design	L854	Nozzle – 2.5 mm double	1
MZ360-0008	Centricut design	L855	Nozzle – 3.0 mm double	1
2 MZ360-0009	Centricut design	L856	Nozzle – 3.5 mm double	1
MZ360-0001CP	Centricut design	L850X	Nozzle – 1.0 mm double CP	1
MZ360-0002CP	Centricut design	L851X	Nozzle – 1.2 mm double CP	1
MZ360-0003CP	Centricut design	L852X	Nozzle – 1.5 mm double CP	1
MZ360-0004CP	Centricut design	L858X	Nozzle – 1.8 mm double CP	1
MZ360-0005CP	Centricut design	L853X	Nozzle – 2.0 mm double CP	1
MZ360-0006CP	Centricut design	L849X	Nozzle – 2.2 mm double CP	1
MZ360-0007CP	Centricut design	L854X	Nozzle – 2.5 mm double CP	1
MZ360-0008CP	Centricut design	L855X	Nozzle – 3.0 mm double CP	1
MZ360-0009CP	Centricut design	L856X	Nozzle – 3.5 mm double CP	1



**Consumables**

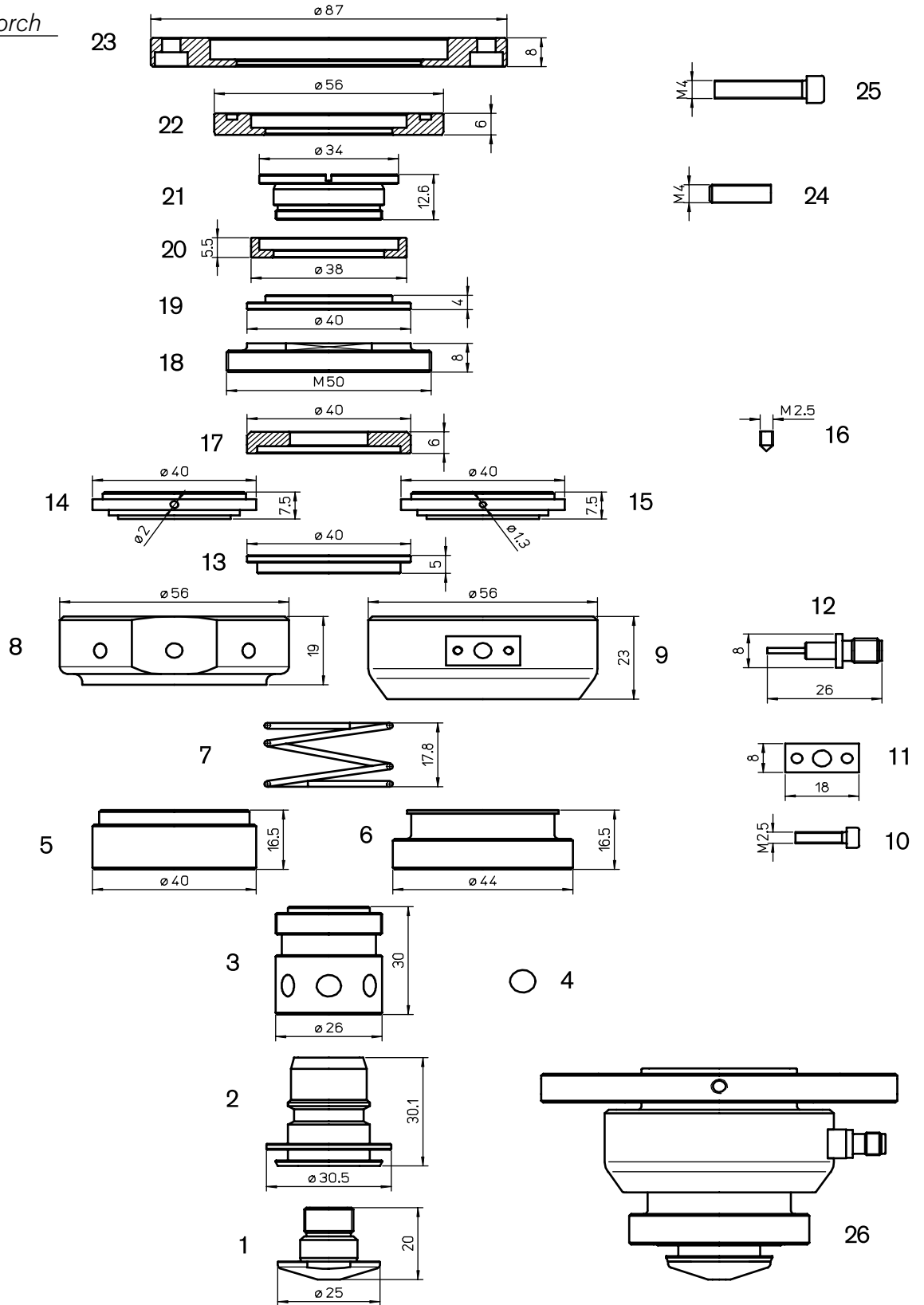
Centricut part number	Reference number	Alternate reference	Description	Pkg qty
MZ368-0018CP		L949X	Nozzle – 0.8 mm CP	1
MZ368-4430CP		L941X	Nozzle – 1.0 mm CP	1
MZ368-4470CP	46143304470	L942X	Nozzle – 1.2 mm CP	1
MZ368-4450CP	46143304450	L943X	Nozzle – 1.5 mm CP	1
1 MZ368-4455CP		L950X	Nozzle – 1.8 mm CP	1
MZ368-4460CP	46143304460	L944X	Nozzle – 2.0 mm CP	1
MZ368-4480CP	46143304480	L945X	Nozzle – 2.5 mm CP	1
MZ368-4490CP	46143304490	L946X	Nozzle – 3.0 mm CP	1
MZ368-4500CP	46143304500	L947X	Nozzle – 3.5 mm CP	1
MZ368-4510CP	46143304510	L948X	Nozzle – 4.0 mm CP	1
MZ373-0001CP		L952X	Nozzle – 1.2 mm double CP	1
MZ368-0005CP		L953X	Nozzle – 1.5 mm double CP	1
MZ373-0003CP		L954X	Nozzle – 2.0 mm double CP	1
2 MZ373-0004CP		L955X	Nozzle – 2.5 mm double CP	1
MZ373-0005CP		L956X	Nozzle – 3.0 mm double CP	1
MZ373-0006CP		L957X	Nozzle – 3.5 mm double CP	1
MZ373-0007CP		L958X	Nozzle – 4.0 mm double CP	1
MZ427-0001		L1264	Nozzle – 1.0 mm	1
MZ427-0002		L1265	Nozzle – 1.2 mm	1
3 MZ427-0003		L1266	Nozzle – 1.5 mm	1
MZ427-0004		L1267	Nozzle – 2.0 mm	1
MZ427-0005		L1268	Nozzle – 3.0 mm	1



**Consumables**

	Centricut part number	Reference number	Alternate reference	Description	Pkg qty
	MZ373-0308CP		L1379X	Nozzle – 0.8 mm slim CP	1
	MZ373-0310CP		L1380X	Nozzle – 1.0 mm slim CP	1
	MZ373-0341CP	46143310341	L1381X	Nozzle – 1.2 mm slim CP	1
	MZ373-0351CP	46143310351	L1382X	Nozzle – 1.5 mm slim CP	1
	MZ373-0318CP		L1389X	Nozzle – 1.8 mm slim CP	1
1	MZ373-0361CP	46143310361	L1383X	Nozzle – 2.0 mm slim CP	1
	MZ373-0365CP		L1388X	Nozzle – 2.2 mm slim CP	1
	MZ373-0371CP	46143310371	L1384X	Nozzle – 2.5 mm slim CP	1
	MZ373-0381CP	46143310381	L1385X	Nozzle – 3.0 mm slim CP	1
	MZ373-0391CP	46143310391	L1386X	Nozzle – 3.5 mm slim CP	1
	MZ373-0401CP	46143310401	L1387X	Nozzle – 4.0 mm slim CP	1
	MZ373-0300CP		L1390X	Nozzle – 0.8 mm slim double CP	1
	MZ373-0311CP		L1391X	Nozzle – 1.0 mm slim double CP	1
	MZ373-0312CP		L1399X	Nozzle – 1.2 mm slim double CP	1
	MZ373-0315CP	36143311500	L1392X	Nozzle – 1.5 mm slim double CP	1
	MZ373-0319CP		L1400X	Nozzle – 1.8 mm slim double CP	1
2	MZ373-0320CP	36143311510	L1393X	Nozzle – 2.0 mm slim double CP	1
	MZ373-0322CP		L1398X	Nozzle – 2.2 mm slim double CP	1
	MZ373-0325CP	36143311520	L1394X	Nozzle – 2.5 mm slim double CP	1
	MZ373-0330CP	36143311530	L1395X	Nozzle – 3.0 mm slim double CP	1
	MZ373-0335CP		L1396X	Nozzle – 3.5 mm slim double CP	1

HyperGear – HTX torch

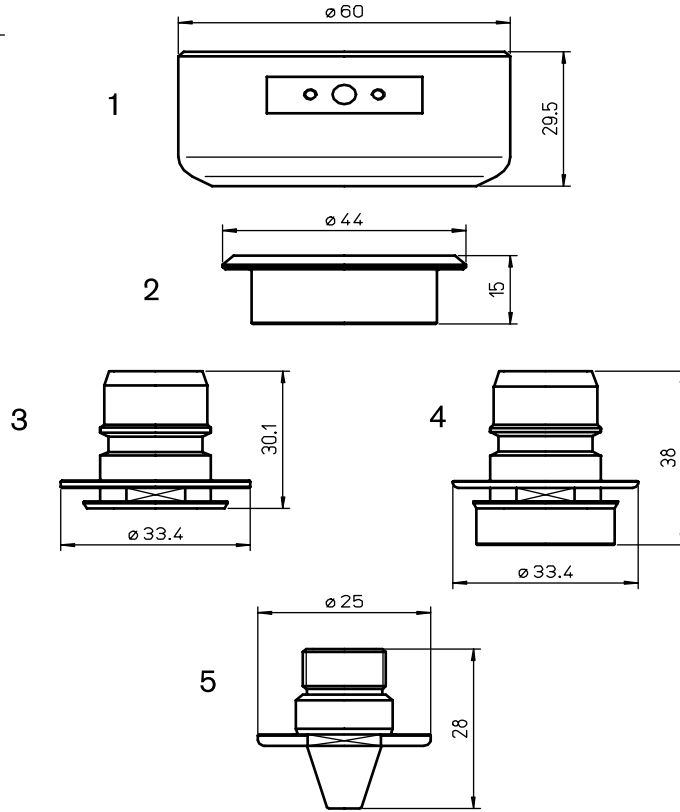




**Consumables**

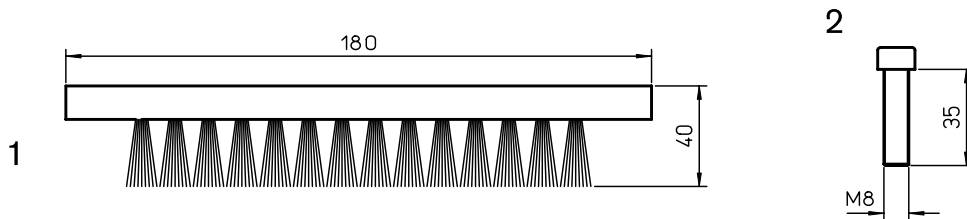
	Centricut part number	Reference number	Alternate reference	Description	Pkg qty
1	Please refer to the Mazak <sup>®</sup> nozzle section				
2	MZ368-0001	36143304420	AL242	Nozzle holder Hyper Gear	1
3	MZ413-4400	36143304400	AL291	Coupler	1
4	MZ413-0230	46143300230	AL311	Replacement ball kit (6 pcs)	1
5	MZ413-4430	46143304430	AL292	Spring retainer	1
6	MZ413-8000	46143308000	AL314	Spring retainer, steel	1
7	MZ413-0220	46143300220	AL289	Spring	1
8	MZ413-3242	36143303242	AL293	Body	1
9	MZ413-7980	36143307980	AL313	Aluminium body	1
10	MZ413-0030	46603300030	AL317	Screw	1
11	MZ413-8170	46143308170	AL318	Spacer	1
12	MZ413-8190	46143308190	AL315	Connector	1
13	MZ408-0240	46143300240	AL284	Ring, ceramic	1
	MZ413-0240	46143300240	AL384	Insulator, Teflon <sup>®</sup>	1
14	MZ413-4250	46143304250	AL287	Retainer nut	1
15	MZ413-7420	46143307420	AL295	Retainer nut	1
16	MZ413-1180	46683301180	AL322	Screw	1
17	MZ408-4440	46143304440	AL290	Ring, ceramic	1
	MZ413-4440	46143304440	AL390	Insulator, Teflon <sup>®</sup>	1
18	MZ413-0290	46143300290	AL294	Retainer nut	1
19	MZ408-0260	46143300260	AL285	Ring, ceramic	1
	MZ413-0260	46143300260	AL385	Insulator, Teflon <sup>®</sup>	1
20	MZ408-0270	46143300270	AL286	Ring, ceramic	1
	MZ413-0270	46143300270	AL386	Insulator, Teflon <sup>®</sup>	1
21	MZ413-0280	46143300280	AL288	Retainer nut	1
22	MZ413-0320	46143300320	AL316	Ring,brass	1
23	MZ413-0332	36143300332	AL320	Ring, aluminum	1
24	MZ413-0010		AL321	Screw (4 pcs)	1
25	MZ413-0200	A06CB040200	AL319	Set screw (4 pcs)	1
26	MZ413-0001		TMA50/C	Complete head (ceramic insulator)	1

HyperGear – PFP torch



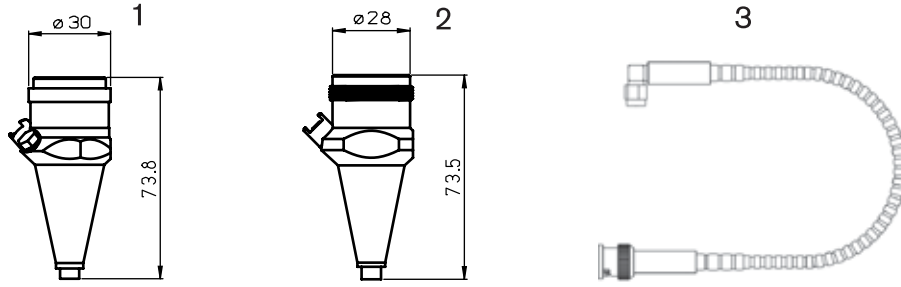
**Consumables**

Centricut part number	Reference number	Alternate reference	Description	Pkg qty
1 MZ368-0550	AL365	36143310550	Aluminum body	1
2 MZ368-0541	AL366	36143310541	Retainer spring – steel	1
3 MZ368-0522	AL362	36143310522	Nozzle holder large	1
4 MZ368-0740	AL363	36143310740	Nozzle holder long	1
5 Please refer to the Mazak <sup>®</sup> Slim nozzle section				



**Consumables**

Centricut part number	Reference number	Alternate reference	Description	Pkg qty
1 MZ427-0006		AL301	Brush – w/screws 180x30x20	1
2 BY328-3884	333884	333884	Plastic screws – 2 pcs	1
AM313-2023	71232023	71232023	Filter – vacuum pump	1



Sensor repairs available in select regions only.

**Consumables**

Centricut part number	Reference number	Alternate reference	Description	Pkg qty
1 PT999-HNZ	56743300500		Sensor repair HNZ	1
2 MZ999-HNPZ (HNP)	567123323A1		Sensor repair HNPZ	1
3	MZ335-1330A	46683301330	Sensor cable – armored 305 mm	1
	MZ335-1980A	46683301980	Sensor cable – armored 280 mm	1
	MZ335-0111A (not shown)	46743300111	Sensor cable – armored 280 mm	1
	MZ335-0181A (not shown)	46743300181	Sensor cable – armored 317.5 mm	1

**Optics**

Centricut part number	Reference number	Type	Diameter	Focal length	Edge thickness
<b>Lenses</b>					
MZ315-0130	Z50MB000130	PLX	1.5"	5.0"	.118"
MZ315-0160	Z50MB000160	PLX	1.5"	5.0"	.236"
MZ315-0400	Z50MB000400	PLX	1.5"	5.0"	.300"
MZ315-5980		PLX	2.0"	5.0"	.300"
MZ315-5160	Z50ZZ005160	PLX	2.0"	5.0"	.310"
MZ315-0516A	Z50ZZ005160A	PLX	2.0"	5.0"	.380"
MZ315-0520A	Z50ZZ00520A	PLX	2.0"	7.5"	.380"
<b>Ultra low absorption lenses</b>					
MZ315-0160MP5	Z50MB000160	PLX	1.5"	5.0"	.236"
MZ315-0400MP5	Z50MB000400	PLX	1.5"	5.0"	.300"
MZ315-0520AMP5	Z50ZZ00520A	PLX	2.0"	7.5"	.380"

Centricut part number	Reference number	Material	Diameter	Edge thickness	S1
<b>Phase shift mirrors</b>					
MZ315-0860	Z50ZZ010860	CU	2.0"	.375"	
MZ315-0040	Z50MB000040	CU	1.5"	.250"	
<b>MZ315-0686</b>	<b>390686</b>	<b>CU</b>	<b>1.5"</b>	<b>.250"</b>	

New items shown in bold

**Optics**

Centricut part number	Reference number	Type	Material	Diameter	Edge thickness	S1/Reflectivity
<b>Zero phase shift mirrors and total reflectors</b>						
MZ315-0017		TRZ	CU	1.575"	.295"	45 degree
MZ315-3055		TRZ	CU	2.36"	.374"	
MZ315-0602		TRZ	CU	2.36"	.394"	
MZ315-8360	Z50ZZ008360	ATFR	CU	2.0"	.375"	
MZ315-0070	Z50MB000070	ZPS	CU	2.0"	.394"	98.80%
MZ315-0060	Z50MB000060	TRZ	CU	2.36"	.394"	99.50%
MZ315-8401	4L104184-01	TRZ	SI	1.75"	.375"	
MZ315-8690		TRZ	SI	1.75"	.375"	
MZ315-8825	408825	TRZ	SI	3.0"	.200"	99.70%

Centricut part number	Reference number	Material	Diameter	Edge thickness	S1/Reflectivity	S2
<b>Output couplers</b>						
<b>MZ315-6662</b>	<b>796662</b>	<b>ZNSE</b>	<b>1.1"</b>	<b>.220"</b>	<b>20MCC-50%</b>	<b>15MCX</b>
MZ315-8570		ZNSE	1.1"	.220"	10MCC-60%	7.5MCX
MZ315-8510		ZNSE	1.1"	.220"	15MCC-65%	
MZ315-0014	BRAL0014	ZNSE	1.1"	.220"	20MCC-40%	15MCX
MZ315-0008	BRAL0008	ZNSE	1.1"	.220"	20MCC-50%	PO/AR
MZ315-5420	Z50MB005420	ZNSE	1.1"	.220"	20MCC-50%	15MCX
MZ315-0007	BRAL0007	ZNSE	1.1"	.220"	20MCC-70%	20MCX

Centricut part number	Reference number	Material	Diameter	Focal length	Edge thickness	S2
<b>Collimating optics</b>						
<b>MZ315-8393</b>	<b>448393</b>	<b>ZNSE</b>	<b>1.5"</b>	<b>15.0 m</b>	<b>.157"</b>	
<b>MZ315-5433</b>	<b>945433</b>	<b>ZNSE</b>	<b>1.5"</b>	<b>15.0 m</b>	<b>.119"</b>	

Centricut part number	Reference number	Material	Diameter	Edge thickness	S1/Reflectivity	S2
<b>Rear mirrors</b>						
MZ315-8500		GE	1.1"	.220"	15MCC-99.5%	
MZ315-0002	BRAL0002	GE	1.1"	.220"	20MCC-99.5%	PO/AR
<b>MZ315-1407</b>	<b>61407, 326453</b>	<b>GE</b>	<b>1.1"</b>	<b>.220"</b>	<b>20MCC-99.5%</b>	
<b>MZ315-0580</b>	<b>Z50MB010580</b>	<b>GE</b>	<b>1.1"</b>	<b>.220"</b>	<b>99.6%</b>	

**Optics care**

Centricut part number	Reference number	Description	Pkg qty
TR300-6452	N/A	CO <sub>2</sub> Lens paper (50 sheets)	1
<b>TR300-SC20</b>		<b>Cotton swab – 20 piece</b>	<b>1</b>
<b>TR300-1115</b>		<b>Lens cleaning pre-cut cotton –100 piece</b>	<b>1</b>
TR300-1010	AL1010	Dropper, lens cleaning fluid	1
TR300-255	AL255	Loupe, magnifying	1
TR300-271	AL271	Base, lens maintenance	1
TR300-7388	787388	Mirror polish (250 ml)	1

**New items shown in bold**



***Broadest product line in the industry!***



**Hypertherm, Inc.**  
Hanover, NH 03755 USA  
603-643-3441 Tel

**Hypertherm Europe B.V.**  
4704 SE Roosendaal, Nederland  
31 165 596907 Tel

**Hypertherm (Shanghai)  
Trading Co., Ltd.**  
PR China 200052  
86-21 5258 3330 /1 Tel

**Hypertherm (S) Pte Ltd.**  
Singapore 349567  
65 6 841 2489 Tel

**Hypertherm (India) Thermal  
Cutting Pvt. Ltd.**  
Chennai, Tamil Nadu  
91 0 44 2834 5361 Tel

**Hypertherm Brasil Ltda.**  
Guarulhos, SP - Brasil  
55 11 2409 2636 Tel

**Hypertherm México, S.A. de C.V.**  
México, D.F.  
52 55 5681 8109 Tel

[www.hypertherm.com](http://www.hypertherm.com)



***Hypertherm***<sup>®</sup>

***Cut with confidence***<sup>®</sup>