



CO₂ laser consumables – Mitsubishi®



Hypertherm®

Highest quality products

- OEM quality
- OEM-approved optics
- 100% satisfaction guarantee

Technical service

OEM-trained technicians on staff with over 25 years of experience.

Free application support for all laser OEMs.

We stand behind our products with industry-leading technical expertise.

Chemical code key

Lens

PFL	Pre-focus
MEN	Meniscus
PLX	Plano-convex
MTD	Mounted
Not MTD	Not mounted
LA	Low absorption
PO	Plano

Mirrors

CU	Copper
GAAS	Gallium arsenide
SI	Silicon
GE	Germanium
ZNSE	Zinc-selenide
PS	Phase shift
MMR	Maximum metal reflector
ATFR	Absorbing thin film reflector
TRZ	Total reflector – zero phase shift
ZPS	Zero phase shift
OC	Output coupler
RM	Rear mirror
COL-I	Collimator input
COL-O	Collimator output
AO	Adaptive optic
MO	Molybdenum
UC	Uncoated
MCX	Convex
MCC	Concave

Measurements

DIA	Diameter
FL	Focal length
ET	Edge thickness

Nozzles

CP	Chrome plated
HD/HP	High density/high pressure

Product is available for the following major OEM brands

Amada®

Behrens®

Bystronic®

Cincinnati®

Finn-Power®

GHT-SHT®

Haas®

Haco®

Hankwang®

Laserdyne®

Laser Lab®

LVD®

Mazak®

Mitsubishi®

Murata Wiedemann® – Fanuc®

Niigata®

NTC® – Beyeler®

Precitec®

Prima Industrie®

Raskin®

Rouchaud®

Salvagnini®

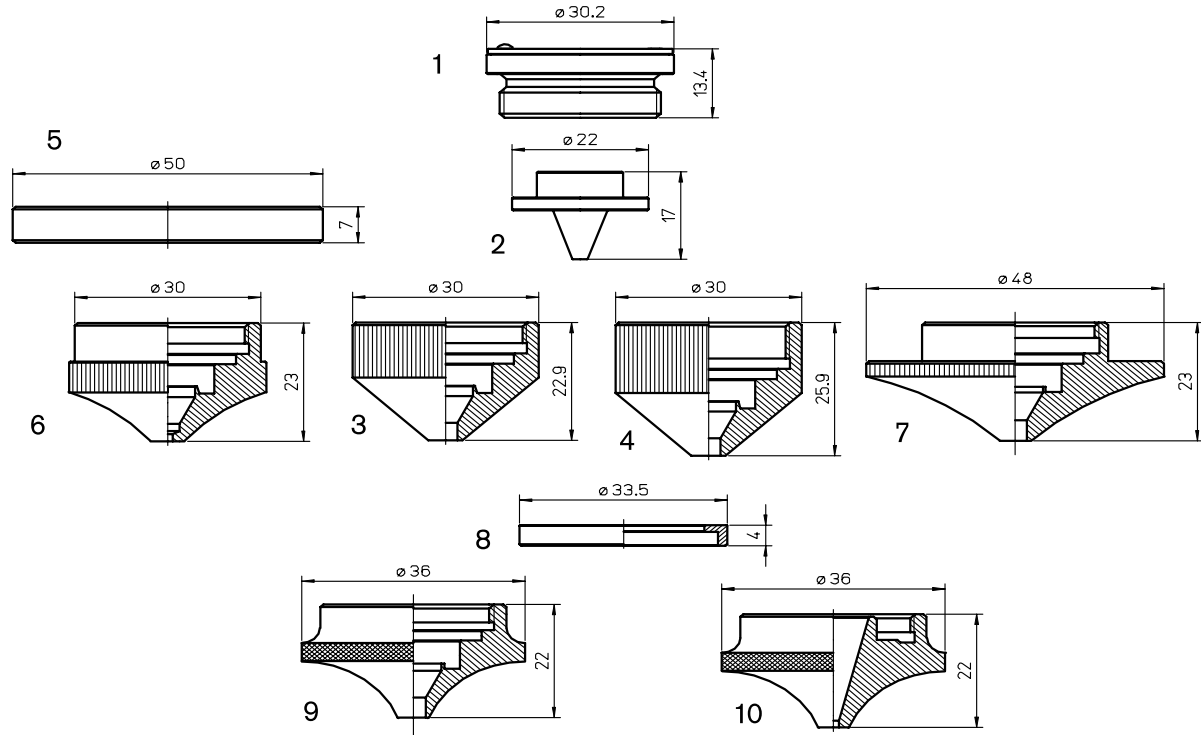
Strippit®

Tanaka®

Thyssen®

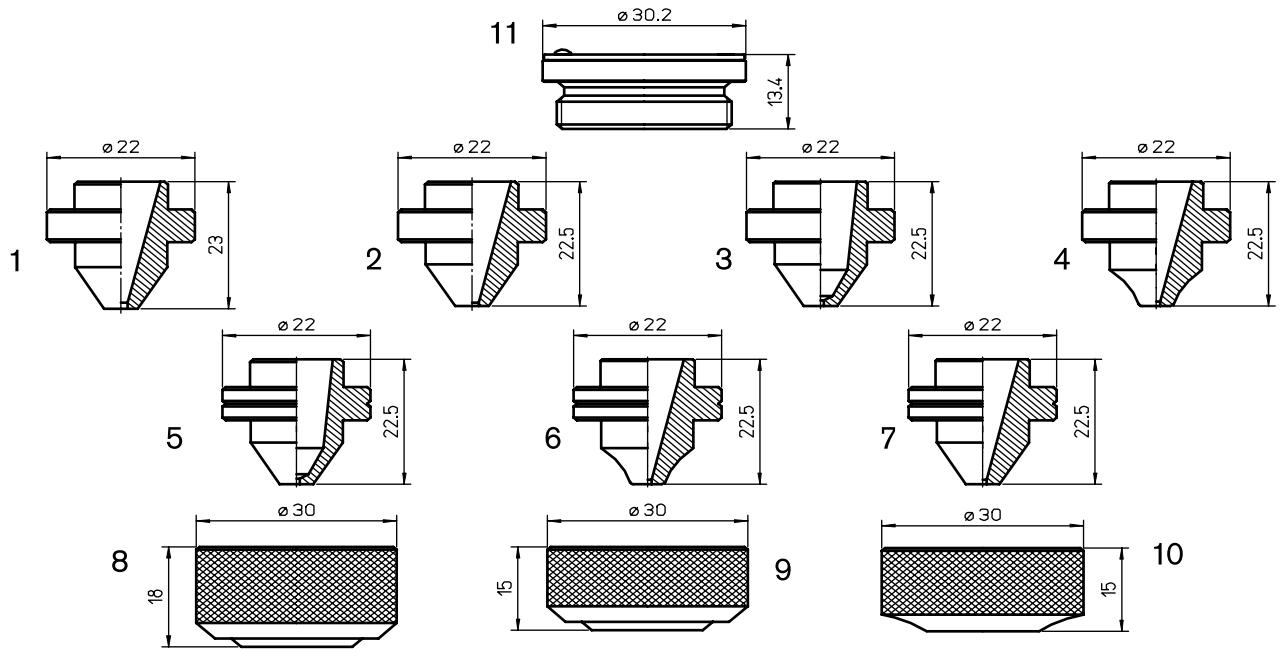
Trumpf®

Valfiv®



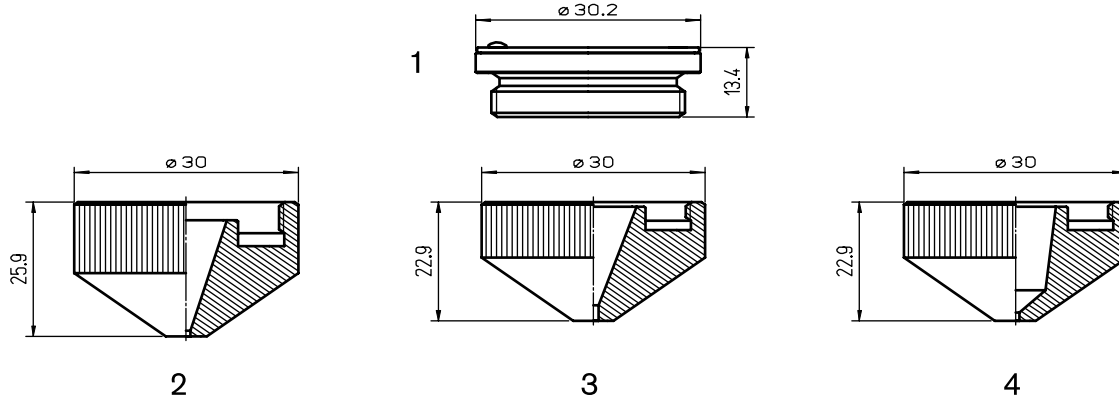
Consumables

Centricut part number	Reference number	Alternate reference	Description	Pkg qty
1 MB334-0001	P0594-860-00001	AL267	Nozzle Holder – IT HP2 MZP/MEL	1
MB316-390	W390	L288	Double nozzle insert – 4 holes	1
MB316-2706	W270-6	L835	Double nozzle insert – 6 holes	1
MB316-270	W270	L280	Double nozzle insert – 8 holes	1
2 MB316-387	W387	L289	Double nozzle insert – 12 holes	1
MB316-388	W388	L290	Double nozzle insert – 16 holes	1
MB316-389	W389	L836	Double nozzle insert – 20 holes	1
MB316-515	W515	L291	Double nozzle insert – 24 Holes	1
3 MB316-269S	71800027, BQ933D221H04, P0593-860-00001	AL238	Double nozzle tip – short	1
4 MB316-269	W269	AL65	Double nozzle tip	1
5 AM416-0001		AL297	Ring (plastic)	1
AM416-0002		AL302	Nozzle – 1.7 mm (outer)	1
AM416-0003		AL303	Nozzle – 2.0 mm (outer)	1
6 AM416-0004		AL304	Nozzle – 2.5 mm (outer)	1
AM416-0005		AL305	Nozzle – 3.0 mm (outer)	1
AM416-0006		AL306	Nozzle – 4.0 mm (outer)	1
7 MB316-0440	BQ933D04YH01	AL266	Outer nozzle	1
8 AM416-0155T	71800155TF, BQ023D021H01	AL341-T	Teflon [®] insulation ring	1
AM416-0155A	71800155AL, BQ023D021H01	AL341-A	Aluminum insulation ring	1
9 AM416-2197	71802197, BQ933D044H01	AL270	Outer nozzle	1
10 AM416-5400	7180015400, BQ023D020H01	L1262	Nozzle – 1.7 mm high speed pierce	1



Consumables

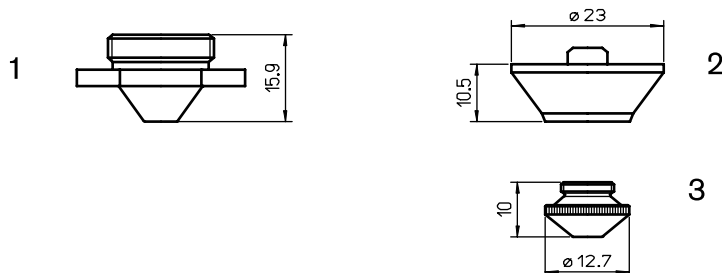
Centricut part number	Reference number	Alternate reference	Description	Pkg qty
MB327-327-1		L354	Nozzle – 1.0 mm	1
MB327-777	W777	L363	Nozzle – 1.2 mm	1
MB327-266	W266	L355	Nozzle – 1.5 mm	1
1 MB327-267	W267	L356	Nozzle – 2.0 mm	1
MB327-776	W776	L357	Nozzle – 2.5 mm	1
MB327-268	W268	L358	Nozzle – 3.0mm	1
MB327-268-3.5	W268-3.5	L359	Nozzle – 3.5 mm	1
AM326-0018	71800018, BQ943D157H01	L1134	Nozzle – 1.5 mm	1
AM326-0019	71800019, BQ943D157H02	L1135	Nozzle – 2.0 mm	1
2 AM326-0020	71800020, BQ943D157H03	L1136	Nozzle – 2.5 mm	1
AM326-0021	71800021, BQ943D157H04	L1137	Nozzle – 3.0 mm	1
AM326-0022	71800022, BQ943D596H01	L1138	Nozzle – 3.5 mm	1
AM387-0016	71800016, BQ943D897H01, W18Q94389701	L1125	Nozzle – 1.0 mm	1
3 AM387-1901	W18Q93309101	L1128	Nozzle – 2.5 mm	1
AM387-1902	W18Q93309102	L1129	Nozzle – 3.0 mm	1
4 AM387-0001	71800016A0, BQ933D283H01	L1126	Nozzle – 1.0 mm w/radius no grooves	1
MB327-0010		L965	Nozzle – 1.0 mm	1
MB327-0012		L966	Nozzle – 1.2 mm	1
5 MB327-0015		L967	Nozzle – 1.5 mm	1
MB327-0017		L964	Nozzle – 1.7 mm	1
MB327-0020		L968	Nozzle – 2.0 mm	1
MB327-0025		L969	Nozzle – 2.5 mm	1
6 AM387-0017	71800017, BQ943D269H01, W18Q93326901	L1130	Nozzle – 1.2 mm w/radius	1
7 AM387-2701	W18Q93302701	L1132	Nozzle – 1.7 mm	1
8 MB327-263	W263	AL116	Nozzle nut	1
9 MB327-263S		AL240	Nozzle nut short	1
10 AM367-0269	71800026, BQ933D94H01	AL269	Nozzle nut short	1
11 MB334-0001	P0594-860-00001	AL267	Nozzle holder – IT HP2 MZP/MEL	1



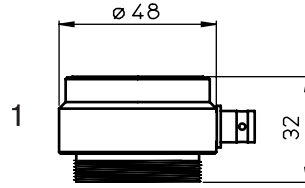
Consumables

	Centricut part number	Reference number	Alternate reference	Description	Pkg qty
1	MB334-0001	P0594-860-00001	AL267	Nozzle holder – IT HP2 MZP/MEL	1
	MB334-1249	W1249	L398	Shield nozzle – 1.0 mm	1
	MB334-1256	W1256	L397	Shield nozzle – 1.2 mm	1
	MB334-1250	W1250	L399	Shield nozzle – 1.5 mm	1
2	MB334-1251	W1251	L702	Shield nozzle – 2.0 mm	1
	MB334-1252	W1252	L703	Shield nozzle – 2.5 mm	1
	MB334-1253	W1253	L704	Shield nozzle – 3.0 mm	1
	MB334-1254	W1254	L705	Shield nozzle – 3.5 mm	1
	MB334-1255	W1255	L706	Shield nozzle – 4.0 mm	1
	MB334-1626	W1626	L910	Nozzle – 1.0 mm	1
	MB334-1627	W1627	L911	Nozzle – 1.2 mm	1
	MB334-1628	W1628	L912	Nozzle – 1.5 mm	1
	MB334-1661	W1661	L918	Nozzle – 1.7 mm	1
	MB334-1629	W1629	L913	Nozzle – 2.0 mm	1
	MB334-1630	W1630	L914	Nozzle – 2.5 mm	1
	MB334-1664	W1664	L915	Nozzle – 3.0 mm	1
	MB334-1665	W1665	L916	Nozzle – 3.5 mm	1
	MB334-1666	W1666	L917	Nozzle – 4.0 mm	1
3	MB334-1663	W1663	L919	Nozzle – 5.0 mm	1
	MB334-1626CP	W1626	L910X	Nozzle – 1.0 mm CP	1
	MB334-1627CP	W1627	L911X	Nozzle – 1.2 mm CP	1
	MB334-1628CP	W1628	L912X	Nozzle – 1.5 mm CP	1
	MB334-1661CP	W1661	L918X	Nozzle – 1.7 mm CP	1
	MB334-1629CP	W1629	L913X	Nozzle – 2.0 mm CP	1
	MB334-1630CP	W1630	L914X	Nozzle – 2.5 mm CP	1
	MB334-1664CP	W1664	L915X	Nozzle – 3.0 mm CP	1
	MB334-1665CP	W1665	L916X	Nozzle – 3.5 mm CP	1
	MB334-1666CP	W1666	L917X	Nozzle – 4.0 mm CP	1
	MB334-1626B	W1626B	L1078	Nozzle – 1.0 mm low pressure	1
	MB334-1627B	W1627B	L1079	Nozzle – 1.2 mm low pressure	1
	MB334-1628B	W1628B	L1080	Nozzle – 1.5 mm low pressure	1
	MB334-1629B	W1629B	L1081	Nozzle – 2.0 mm low pressure	1
4	MB334-1630B	W1630B	L1082	Nozzle – 2.5 mm low pressure	1
	MB334-1664B	W1664B	L1083	Nozzle – 3.0 mm low pressure	1
	MB334-1665B	W1665B	L1084	Nozzle – 3.5 mm low pressure	1
	MB334-1666B	W1666B	L1085	Nozzle – 4.0 mm low pressure	1
	MB334-W290 (not shown)			O-ring	1

New items shown in bold


Consumables

Centricut part number	Reference number	Alternate reference	Description	Pkg qty
MB330-000		L548	Nozzle – 1.0 mm	1
MB330-001	W001	L549	Nozzle – 1.5 mm	1
1 MB330-002	W002	L550	Nozzle – 2.0 mm	1
MB330-004	W004	L551	Nozzle – 2.5 mm	1
MB330-003	W003	L552	Nozzle – 3.0 mm	1
2 PT344-1079	281079, P0492-430-00003, W149	AL138	OEM nozzle holder KTM1.5" S F2.5"	1
PT344-0013	280013, P0492-441-00008	L400	Nozzle – 0.8 mm	1
PT344-0013X	280013, P0492-441-00008	L30400	Nozzle – 0.8 mm (10 pack)	10
PT344-0014	280014, P0492-442-00010, W223	L401	Nozzle – 1.0 mm	1
MB336-223X	280014, P0492-442-00010, W223	L30401	Nozzle – 1.0 mm (10 pack)	10
PT344-0015	280015, P0492-443-00012	L402	Nozzle – 1.2 mm	1
PT344-0015X	280015, P0492-443-00012	L30402	Nozzle – 1.2 mm (10 pack)	10
MB336-224	280016, P0492-444-00015, W224	L403	Nozzle – 1.5 mm	1
MB336-224X	280016, P0492-444-00015, W224	L30403	Nozzle – 1.5 mm (10 pack)	10
PT344-0018	P0492-447-00018	L543	Nozzle – 1.8 mm	1
PT344-0018X	P0492-447-00018	L30543	Nozzle – 1.8 mm (10 pack)	10
PT344-0937	280937, P0492-445-00020, W225	L544	Nozzle – 2.0 mm	1
MB336-225X	280937, P0492-445-00020, W225	L30544	Nozzle – 2.0 mm (10 pack)	10
PT344-0023	P0492-448-00023	L546	Nozzle – 2.3 mm	1
PT344-0023X	P0492-448-00023	L30546	Nozzle – 2.3 mm (10 pack)	10
MB336-226	281791, P0492-446-00025, W226	L545	Nozzle – 2.5 mm	1
MB336-226X	281791, P0492-446-00025, W226	L30545	Nozzle – 2.5 mm (10 pack)	10
MB336-0005		L547	Nozzle – 3.0 mm	1
3 MB336-0005X		L30547	Nozzle – 3.0 mm (10 pack)	10
PT344-0008CP	280013, P0492-441-00008	L400X	Nozzle – 0.8 mm CP	1
PT344-0008CPX	280013, P0492-441-00008	L30400X	Nozzle – 0.8 mm CP (10 pack)	10
PT344-0010CP	280014, P0492-442-00010, W223	L401X	Nozzle – 1.0 mm CP	1
PT344-0010CPX	280014, P0492-442-00010, W223	L30401X	Nozzle – 1.0 mm CP (10 pack)	10
PT344-0012CP		L402X	Nozzle – 1.2 mm CP	1
PT344-0012CPX		L30402X	Nozzle – 1.2 mm CP (10 pack)	10
PT344-0015CP	280016, P0492-444-00015, W224	L403X	Nozzle – 1.5 mm CP	1
PT344-0015CPX	280016, P0492-444-00015, W224	L30403X	Nozzle – 1.5 mm CP (10 pack)	10
PT344-0018CP	P0492-447-00018	L543X	Nozzle – 1.8 mm CP	1
PT344-0018CPX	P0492-447-00018	L30543X	Nozzle – 1.8 mm CP (10 pack)	10
PT344-0022CP	280937, P0492-445-00020, W225	L544X	Nozzle – 2.0 mm CP	1
PT344-0022CPX	280937, P0492-445-00020, W225	L30544X	Nozzle – 2.0 mm CP (10 pack)	10
PT344-0023CP	P0492-448-00023	L546X	Nozzle – 2.3 mm CP	1
PT344-0023CPX	P0492-448-00023	L30546X	Nozzle – 2.3 mm CP (10 pack)	10
PT344-0025CP	281791, P0492-446-00025, W226	L545X	Nozzle – 2.5 mm CP	1
PT344-0025CPX	281791, P0492-446-00025, W226	L30545X	Nozzle – 2.5 mm CP (10 pack)	10
PT344-0027CP		L547X	Nozzle – 3.0 mm CP	1
PT344-0027CPX		L30547X	Nozzle – 3.0 mm CP (10 pack)	10



Sensor repairs available in select regions only.

Consumables

Centricut part number	Reference number	Alternate reference	Description	Pkg qty
1 MB999-429A	W429A		Sensor repair W429A	1
MB999-239 (not shown)	W239		Sensor repair W239	1
MB999-SE (not shown)	P0594-820-00001		Sensor repair SEHP2	1

Optics

Centricut part number	Reference number	Type	Diameter	Focal length	Edge thickness	
Lenses						
MB312-018	W018	PLX	1.5"	7.5"	.315"	
MB312-500	W500	PLX	1.5"	5.0"	.310"	
MB312-505	W505	PLX	2.0"	5.0"	.310"	
MB312-510	W510	PLX	2.0"	7.5"	.310"	
Ultra low absorption lenses						
MB312-018MP5	W018	PLX	1.5"	7.5"	.315"	
MB312-505MP5	W505	PLX	2.0"	5.0"	.310"	
MB312-510MP5	W510	PLX	2.0"	7.5"	.310"	
Centricut part number	Reference number	Material	Diameter	Edge thickness	S1	
Phase shift mirrors						
MB316-004	R004	SI	2.0"	.200"		
Centricut part number	Reference number	Type	Material	Diameter	Edge thickness	S1
Collimating optics						
MB312-250			ZNSE	1.5"	.1575"	
MB312-298		MMR	CU	2.36"	.118"	
MB312-1529		MMR	CU	2.36"	.236"	15MCC
MB312-1528		MMR	CU	2.36"	2.36"	22MCC
Zero phase shift mirrors and total reflectors						
MB312-106	R106	TRZ	CU	1.1"	.236"	
MB312-107	R107	TRZ	CU	2.0"	.354"	
MB312-102	W102	ZPS	CU	2.0"	.200"	
MB312-051	R051	ZPS	CU	2.36"	.236"	
MB312-643	W643	TRZ	CU	3.0"	.591"	
MB312-644	W644	TRZ	CU	2.36"	.591"	
MB312-160	R160 & R160A	ZPS	CU	3.0"	.250"	
MB312-571		TRZ	SI	1.41"	.236"	
MB312-760		TRZ	SI	1.96"	.354"	
MB312-321		TRZ	SI	1.96"	.354"	

New items shown in bold

Centricut part number	Reference number	Material	Diameter	Edge thickness	S1/Reflectivity	S2
Output couplers						
MB312-259	R259	ZNSE	1.5"	.236"	10MCC-17%	15MCX
MB312-519	R519	ZNSE	1.5"	.236"	10MCC-17%	10MC
MB312-508	R508	ZNSE	1.5"	.236"	10MCC-30%	10MCX
MB312-500R	R5)00	ZNSE	1.5"	.236"	20MCC-30%	PO/AR
MB312-570	R570	ZNSE	2.0"	0.236	14MCC-17%	20MCX

Rear mirrors

MB312-003	R003	ZNSE	1.5"	.236"	20MCC-99%	PO/AR
MB312-572		ZNSE	1.5"	.354"	25MCC-99%	

Optics care

Centricut part number	Reference number	Description	Pkg qty
TR300-6452	N/A	CO ₂ Lens paper (50 sheets)	1
TR300-1010	AL1010	Dropper, lens cleaning fluid	1
TR300-255	AL255	Loupe, magnifying	1
TR300-271	AL271	Base, lens maintenance	1
TR300-7388	787388	Mirror polish (250 ml)	1



Broadest product line in the industry!



Hypertherm, Inc.
Hanover, NH 03755 USA
603-643-3441 Tel

Hypertherm Europe B.V.
4704 SE Roosendaal, Nederland
31 165 596907 Tel

**Hypertherm (Shanghai)
Trading Co., Ltd.**
PR China 200052
86-21 5258 3330 /1 Tel

Hypertherm (S) Pte Ltd.
Singapore 349567
65 6 841 2489 Tel

**Hypertherm (India) Thermal
Cutting Pvt. Ltd.**
Chennai, Tamil Nadu
91 0 44 2834 5361 Tel

Hypertherm Brasil Ltda.
Guarulhos, SP - Brasil
55 11 2409 2636 Tel

Hypertherm México, S.A. de C.V.
México, D.F.
52 55 5681 8109 Tel

www.hypertherm.com



Hypertherm[®]

Cut with confidence[®]