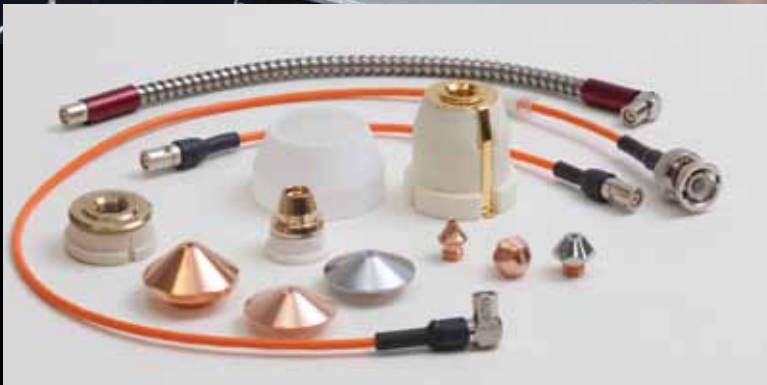




CO₂ laser consumables – Precitec®



Hypertherm®

Highest quality products

- OEM quality
- OEM-approved optics
- 100% satisfaction guarantee

Technical service

OEM-trained technicians on staff with over 25 years of experience.

Free application support for all laser OEMs.

We stand behind our products with industry-leading technical expertise.

Chemical code key

Lens

PFL	Pre-focus
MEN	Meniscus
PLX	Plano-convex
MTD	Mounted
Not MTD	Not mounted
LA	Low absorption
PO	Plano

Mirrors

CU	Copper
GAAS	Gallium arsenide
SI	Silicon
GE	Germanium
ZNSE	Zinc-selenide
PS	Phase shift
MMR	Maximum metal reflector
ATFR	Absorbing thin film reflector
TRZ	Total reflector – zero phase shift
ZPS	Zero phase shift
OC	Output coupler
RM	Rear mirror
COL-I	Collimator input
COL-O	Collimator output
AO	Adaptive optic
MO	Molybdenum
UC	Uncoated
MCX	Convex
MCC	Concave

Measurements

DIA	Diameter
FL	Focal length
ET	Edge thickness

Nozzles

CP	Chrome plated
HD/HP	High density/high pressure

Product is available for the following major OEM brands

Amada®

Behrens®

Bystronic®

Cincinnati®

Finn-Power®

GHT-SHT®

Haas®

Haco®

Hankwang®

Laserdyne®

Laser Lab®

LVD®

Mazak®

Mitsubishi®

Murata Wiedemann® – Fanuc®

Niigata®

NTC® – Beyeler®

Precitec®

Prima Industrie®

Raskin®

Rouchaud®

Salvagnini®

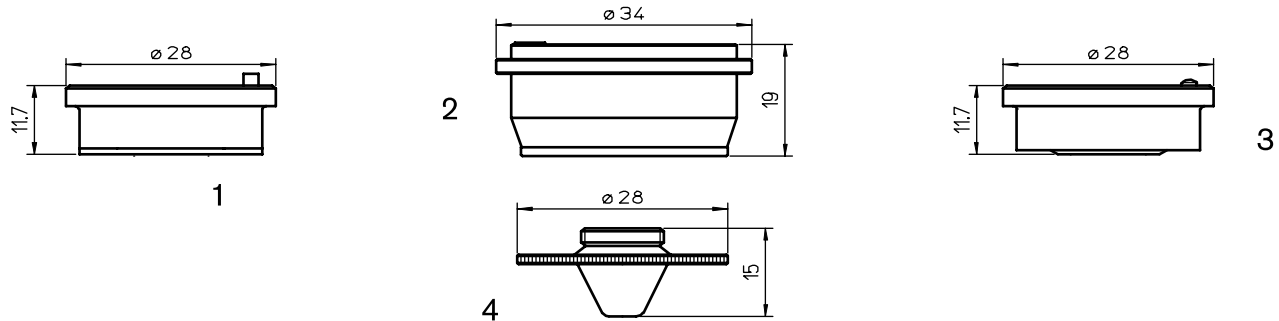
Strippit®

Tanaka®

Thyssen®

Trumpf®

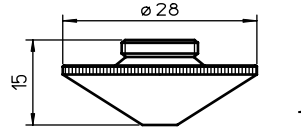
Valfiv®



Consumables

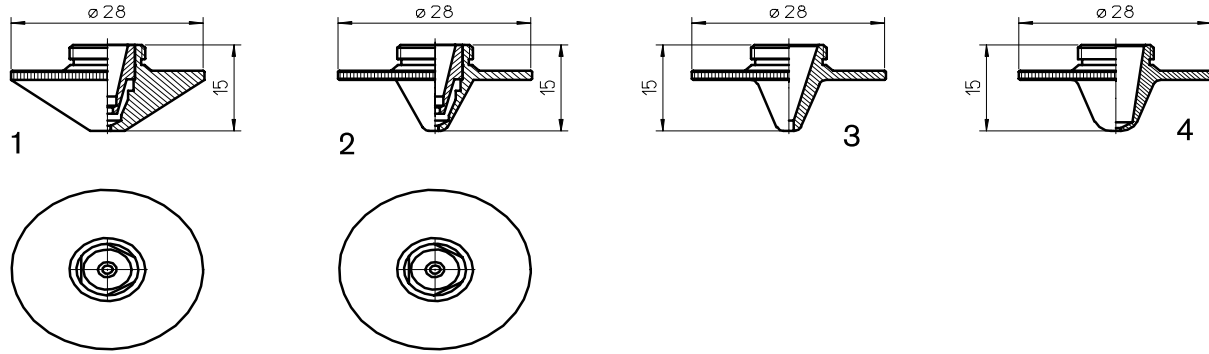
	Centricut part number	Reference number	Alternate reference	Description	Pkg qty
1	PT348-1330	281330, P0571-260-00001	AL131	Nozzle holder – ceramic	1
	PT348-1051	P0571-1051-00001	AL355	Nozzle holder – KT B2"	1
2	PT348-1001		AL228	Nozzle holder	1
3	PT348-1518	281518, P0571-265-00001	AL141	Nozzle holder IT B2" Z	1
	PT350-1590	281590, P0591-569-00008	L247	Nozzle – 0.8 mm	1
	PT350-1331	281331, P0591-561-00010	L162	Nozzle – 1.0 mm	1
	PT350-1351	281351, P0591-562-00012	L130	Nozzle – 1.25 mm	1
	PT350-1352	281352, P0591-563-00015	L131	Nozzle – 1.5 mm	1
	PT350-0017		L248	Nozzle – 1.7 mm	1
	PT350-1353	281353, P0591-564-00018	L153	Nozzle – 1.8 mm	1
	PT350-1354	281354, P0591-565-00020	L132	Nozzle – 2.0 mm	1
	PT350-0023		L154	Nozzle – 2.3 mm	1
	PT350-1591	281591, P0591-566-00025	L155	Nozzle – 2.5 mm	1
	PT350-0030		L156	Nozzle – 3.0 mm	1
4	PT350-1590CP	281590, P0591-569-00008	L247X	Nozzle – 0.8 mm CP	1
	PT350-1331CP	281331, P0591-561-00010	L162X	Nozzle – 1.0 mm CP	1
	PT350-1351CP	281351, P0591-562-00012	L130X	Nozzle – 1.25 mm CP	1
	PT350-1352CP	281352, P0591-563-00015	L131X	Nozzle – 1.5 mm CP	1
	PT350-0001CP		L248X	Nozzle – 1.7 mm CP	1
	PT350-1353CP	281353, P0591-564-00018	L153X	Nozzle – 1.8 mm CP	1
	PT350-1354CP	281354, P591-565-00020	L132X	Nozzle – 2.0 mm CP	1
	PT350-0002CP		L154X	Nozzle – 2.3 mm CP	1
	PT350-1591CP	281591, P0591-566-00025	L155X	Nozzle – 2.5 mm CP	1
	PT350-0003CP		L156X	Nozzle – 3.0 mm CP	1

New items shown in bold



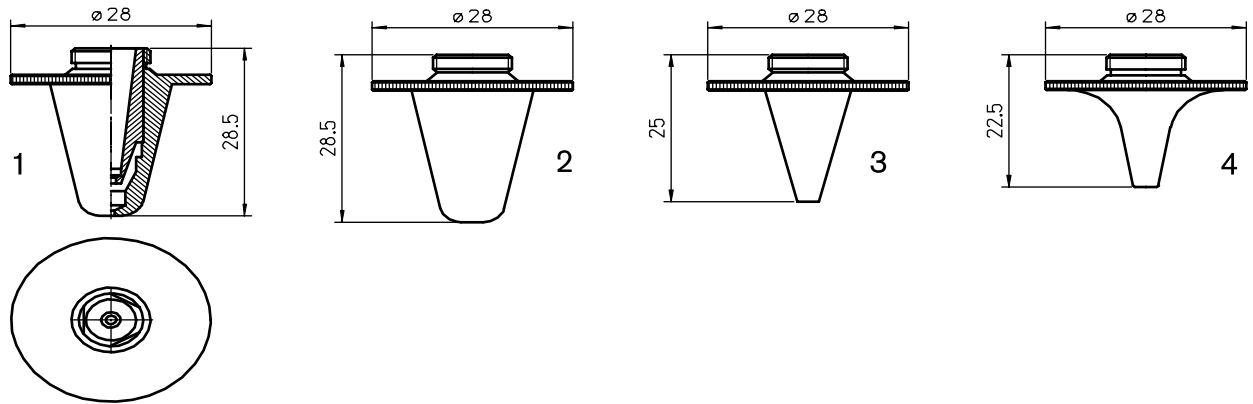
Consumables

Centricut part number	Reference number	Alternate reference	Description	Pkg qty
PT345-0008		L935	Nozzle – 0.8 mm HD	1
PT345-1548	281548, P0591-571-00010	L234	Nozzle – 1.0 mm HD	1
PT345-1549	281549, P0591-572-00012	L235	Nozzle – 1.25 mm HD	1
PT345-1463	281463, P0591-573-00015	L236	Nozzle – 1.5 mm HD	1
PT345-0001	P0591-574-00018	L237	Nozzle – 1.8 mm HD	1
PT345-1550	281550, P0591-575-00020	L238	Nozzle – 2.0 mm HD	1
PT345-0003		L239	Nozzle – 2.3 mm HD	1
PT345-1551	281551, P0591-576-00025	L240	Nozzle – 2.5 mm HD	1
PT345-1552		L936	Nozzle – 2.75 mm HD	1
PT345-0002		L241	Nozzle – 3.0 mm HD	1
PT345-0005		L826	Nozzle – 3.2 mm HD	1
PT345-0006		L827	Nozzle – 3.5 mm HD	1
PT345-0004		L828	Nozzle – 4.0 mm HD	1
PT345-0007		L829	Nozzle – 4.5 mm HD	1
1 PT345-1547CP		L935X	Nozzle – 0.8 mm HD CP	1
PT345-1548CP	281548, P0591-571-00010	L234X	Nozzle – 1.0 mm HD CP	1
PT345-1549CP	281549, P0591-572-00012	L235X	Nozzle – 1.25 mm HD CP	1
PT345-1463CP	281463, P0591-573-00015	L236X	Nozzle – 1.5 mm HD CP	1
PT345-0001CP		L237X	Nozzle – 1.8 mm HD CP	1
PT345-1550CP	281550, P0591-575-00020	L238X	Nozzle – 2.0 mm HD CP	1
PT345-0003CP		L239X	Nozzle – 2.3 mm HD CP	1
PT345-1551CP	281551, P0591-576-00025	L240X	Nozzle – 2.5 mm HD CP	1
PT345-1552CP		L936X	Nozzle – 2.75 mm HD CP	1
PT345-0002CP		L241X	Nozzle – 3.0 mm HD CP	1
PT345-0005CP		L826X	Nozzle – 3.2 mm HD CP	1
PT345-0006CP		L827X	Nozzle – 3.5 mm HD CP	1
PT345-0004CP		L828X	Nozzle – 4.0 mm HD CP	1
PT345-0007CP		L829X	Nozzle – 4.5 mm HD CP	1



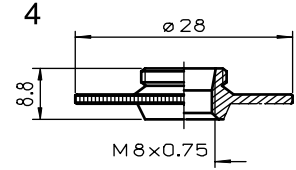
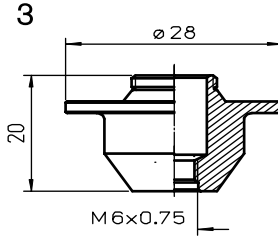
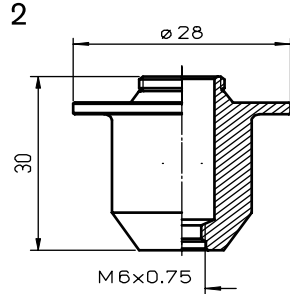
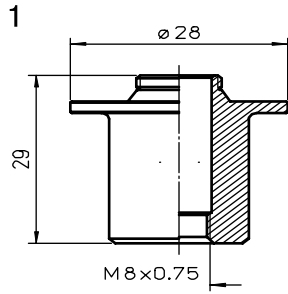
Consumables

Centricut part number	Reference number	Alternate reference	Description	Pkg qty
PT358-0669	Centricut design	L669	Nozzle – 0.8 mm double	1
PT358-0010	Centricut design	L660	Nozzle – 1.0 mm double	1
PT358-0125	Centricut design	L661	Nozzle – 1.25 mm double	1
PT358-0015	Centricut design	L662	Nozzle – 1.5 mm double	1
PT358-0018	Centricut design	L663	Nozzle – 1.8 mm double	1
PT358-0020	Centricut design	L664	Nozzle – 2.0 mm double	1
PT358-0023	Centricut design	L665	Nozzle – 2.3 mm double	1
PT358-0007	Centricut design	L666	Nozzle – 2.5 mm double	1
PT358-0030	Centricut design	L667	Nozzle – 3.0 mm double	1
PT358-0035	Centricut design	L668	Nozzle – 3.5 mm double	1
1 PT358-0008CP	Centricut design	L669X	Nozzle – 0.8 mm double CP	1
PT358-0010CP	Centricut design	L660X	Nozzle – 1.0 mm double CP	1
PT358-0125CP	Centricut design	L661X	Nozzle – 1.25 mm double CP	1
PT358-0015CP	Centricut design	L662X	Nozzle – 1.5 mm double CP	1
PT358-0018CP	Centricut design	L663X	Nozzle – 1.8 mm double CP	1
PT358-0020CP	Centricut design	L664X	Nozzle – 2.0 mm double CP	1
PT358-0023CP	Centricut design	L665X	Nozzle – 2.3 mm double CP	1
PT358-0025CP	Centricut design	L666X	Nozzle – 2.5 mm double CP	1
PT358-0030CP	Centricut design	L667X	Nozzle – 3.0 mm double CP	1
PT358-0035CP	Centricut design	L668X	Nozzle – 3.5 mm double CP	1
2 PT358-0001	6930250001	L1348	Nozzle – 0.8 mm double	1
PT358-0002	6930250002	L1349	Nozzle – 1.0 mm double	1
PT358-0003	6930250003	L1350	Nozzle – 1.2 mm double	1
PT358-0004	6930250004	L1351	Nozzle – 1.5 mm double	1
3 PT406-0001	Centricut design	L738	Nozzle – 1.0 mm HD	1
PT406-0002	Centricut design	L739	Nozzle – 1.25 mm HD	1
PT406-0003	Centricut design	L740	Nozzle – 1.5 mm HD	1
4 PT406-0008	Centricut design	L792	Nozzle – 0.8 mm	1
PT406-0010	Centricut design	L793	Nozzle – 1.0 mm	1
PT406-0125	Centricut design	L794	Nozzle – 1.25 mm	1
PT406-0015	Centricut design	L742	Nozzle – 1.5 mm	1
PT406-0018	Centricut design	L743	Nozzle – 1.8 mm	1
PT406-0020	Centricut design	L744	Nozzle – 2.0 mm	1



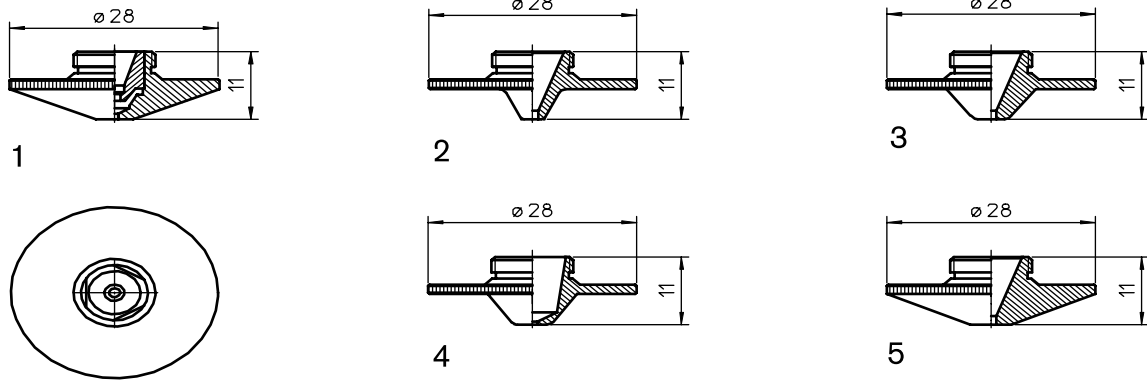
Consumables

Centricut part number	Reference number	Alternate reference	Description	Pkg qty
PT420-0010	Centricut design	L680	Nozzle – 1.0 mm double long	1
PT420-0125	Centricut design	L681	Nozzle – 1.25 mm double long	1
PT420-0015	Centricut design	L682	Nozzle – 1.5 mm double long	1
PT420-0018	Centricut design	L683	Nozzle – 1.8 mm double long	1
1 PT420-0020	Centricut design	L684	Nozzle – 2.0 mm double long	1
PT420-0023	Centricut design	L685	Nozzle – 2.3 mm double long	1
PT420-0025	Centricut design	L686	Nozzle – 2.5 mm double long	1
PT420-0030	Centricut design	L687	Nozzle – 3.0 mm double long	1
PT420-0035	Centricut design	L688	Nozzle – 3.5 mm double long	1
PT390-0010	P0573-563-00010	L308	Nozzle – 1.0 mm long	1
PT390-0012	P0573-563-00012	L307	Nozzle – 1.25 mm long	1
PT390-0015	P0573-563-00015	L382	Nozzle – 1.5 mm long	1
2 PT390-0018		L383	Nozzle – 1.8 mm long	1
PT390-0020	P0573-564-00020	L437	Nozzle – 2.0 mm long	1
PT390-0023	P0573-565-00023	L438	Nozzle – 2.3 mm long	1
PT390-0025	P0573-566-00025	L439	Nozzle – 2.5 mm long	1
PT390-0030		L440	Nozzle – 3.0 mm long	1
PT390-0001		L1341	Nozzle – 1.0 mm long	1
3 PT390-0002		L1343	Nozzle – 1.5 mm long	1
PT390-0003		L1344	Nozzle – 1.8 mm long	1
PT390-0004		L1345	Nozzle – 2.0 mm long	1
PT390-0040	P0578-0411-00010	L1374	Nozzle – 1.0 mm long w/radius	1
PT390-0005		L1375	Nozzle – 1.2 mm long w/radius	1
4 PT390-0006	P0578-0413-00015	L1376	Nozzle – 1.5 mm long w/radius	1
PT390-0009	P0578-0414-00018	L1373	Nozzle – 1.8 mm long w/radius	1
PT390-0007		L1377	Nozzle – 2.0 mm long w/radius	1
PT390-0008		L1378	Nozzle – 2.5 mm long w/radius	1



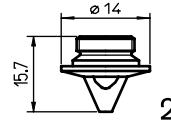
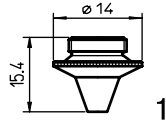
Consumables

Centricut part number	Reference number	Alternate reference	Description	Pkg qty
1 PT406-0333		AL333	Nozzle adapter L – 29 M6	1
2 PT406-0334		AL334	Nozzle adapter L – 30 M6	1
3 PT406-0335		AL335	Nozzle adapter L – 20 M6	1
4 PT406-0043	Centricut design	AL43	Nozzle adapter	1



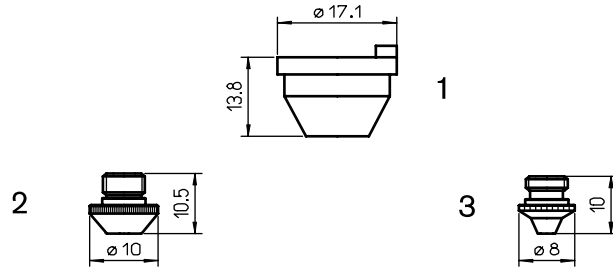
Consumables

Centricut part number	Reference number	Alternate reference	Description	Pkg qty
PT377-0001	Centricut design	L1179	Nozzle – 1.0 mm double	1
PT377-0002	Centricut design	L1180	Nozzle – 1.5 mm double	1
PT377-0003	Centricut design	L1181	Nozzle – 2.0 mm double	1
PT377-0004	Centricut design	L1182	Nozzle – 2.5 mm double	1
PT377-0005	Centricut design	L1183	Nozzle – 3.0 mm double	1
1 PT377-0001CP	Centricut design	L1179X	Nozzle – 1.0 mm double CP	1
PT377-0002CP	Centricut design	L1180X	Nozzle – 1.5 mm double CP	1
PT377-0003CP	Centricut design	L1181X	Nozzle – 2.0 mm double CP	1
PT377-0004CP	Centricut design	L1182X	Nozzle – 2.5 mm double CP	1
PT377-0005CP	Centricut design	L1183X	Nozzle – 3.0 mm double CP	1
PT348-0001		L1218	Nozzle – 1.5 mm HD	1
PT348-0002		L1219	Nozzle – 2.0 mm HD	1
2 PT348-0003		L1220	Nozzle – 2.5 mm HD	1
PT348-0001CP		L1218X	Nozzle – 1.5 mm HD CP	1
PT348-0002CP		L1219X	Nozzle – 2.0 mm HD CP	1
PT348-0003CP		L1220X	Nozzle – 2.5 mm HD CP	1
PT348-0015		L1062	Nozzle – 1.5 mm HD	1
3 PT348-0020		L1063	Nozzle – 2.0 mm HD	1
PT348-0025		L1064	Nozzle – 2.5 mm HD	1
PT348-0030		L1065	Nozzle – 3.0 mm HD	1
PT348-1340	281340, P0571-281-00010	L410	Nozzle – 1.0 mm	1
PT348-1341	281341, P0571-282-00012	L411	Nozzle – 1.2 mm	1
4 PT348-1342	281342, P0571-283-00015	L412	Nozzle – 1.5 mm	1
PT348-0018	281342, P0571-284-00018	L413	Nozzle – 1.8 mm	1
PT348-1343	281343, P0571-285-00020	L414	Nozzle – 2.0 mm	1
PT348-1344	281344, P0571-286-00025	L415	Nozzle – 2.5 mm	1
PT377-0010	281599, P0571-291-00010	L465	Nozzle – 1.0 mm	1
PT377-0012	P0571-292-00012	L466	Nozzle – 1.2 mm	1
PT377-0015	281570, P0571-293-00015	L467	Nozzle – 1.5 mm	1
5 PT377-0018		L468	Nozzle – 1.8 mm	1
PT377-0020	281571, P0571-295-00020	L469	Nozzle – 2.0 mm	1
PT377-0025	281572, P0571-297-00025	L470	Nozzle – 2.5 mm	1
PT377-0030		L463	Nozzle – 3.0 mm	1



Consumables

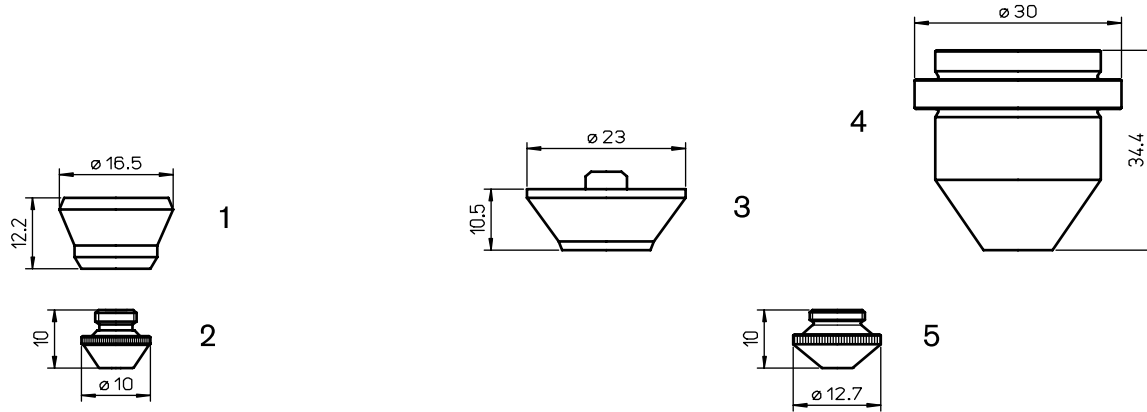
Centricut part number	Reference number	Alternate reference	Description	Pkg qty
AKK52 – AKH27 – YH27 – YR30 Sensor system				
PT344-1813	281813, P0589-424-00008	L405	Nozzle – 0.8 mm	1
PT344-1813X	281813, P0589-424-00008	L30405	Nozzle – 0.8 mm (10 pack)	10
PT344-1789	281789, P0589-426-00010	L406	Nozzle – 1.0 mm	1
PT344-1789X	281789, P0589-426-00010	L30406	Nozzle – 1.0 mm (10 pack)	10
PT344-1561	281561, 778550	L404	Nozzle – 1.2 mm	1
PT344-1561X	281561, 778550	L30404	Nozzle – 1.2 mm (10 pack)	10
PT344-1499	281814, 149957	L407	Nozzle – 1.5 mm	1
PT344-1499X	281814, 149957	L30407	Nozzle – 1.5 mm (10 pack)	10
PT344-0020	P0589-428-00020	L408	Nozzle – 2.0 mm	1
PT344-0020X	P0589-428-00020	L30408	Nozzle – 2.0 mm (10 pack)	10
1 PT344-1813CP	281813, P0589-424-00008	L405X	Nozzle – 0.8 mm CP	1
PT344-1813CPX	281813, P0589-424-00008	L30405X	Nozzle – 0.8 mm CP (10 pack)	10
PT344-1789CP	281789, P0589-426-00010	L406X	Nozzle – 1.0 mm CP	1
PT344-1789CPX	281789, P0589-426-00010	L30406X	Nozzle – 1.0 mm CP (10 pack)	10
PT344-1561CP	281561, 778550, P0589-425-00012	L404X	Nozzle – 1.2 mm CP	1
PT344-1561CPX	281561, 778550	L30404X	Nozzle – 1.2 mm CP (10 pack)	10
PT344-1499CP	281814, 149957	L407X	Nozzle – 1.5 mm CP	1
PT344-1499CPX	281814, 149957	L30407X	Nozzle – 1.5 mm CP (10 pack)	10
PT344-0020CP	P0589-428-00020	L408X	Nozzle – 2.0 mm CP	1
PT344-0020CPX	P0589-428-00020	L30408X	Nozzle – 2.0 mm CP (10 pack)	10
YK52 Sensor system				
PT391-0010	281498, P0587-722-00010	L800	Nozzle – 1.0 mm	1
PT391-0010X	281498, P0587-722-00010	L30800	Nozzle – 1.0 mm (10 pack)	10
PT391-0012	P0587-723-00012	L801	Nozzle – 1.2 mm	1
PT391-0012X	P0587-723-00012	L30801	Nozzle – 1.2 mm (10 pack)	10
PT391-0015	281497, P0587-721-00015	L802	Nozzle – 1.5 mm	1
PT391-0015X	281497, P0587-721-00015	L30802	Nozzle – 1.5 mm (10 pack)	10
2 PT391-0018	281516, P0587-737-00018	L803	Nozzle – 1.8 mm	1
PT391-0018X	281516, P0587-737-00018	L30803	Nozzle – 1.8 mm (10 pack)	10
PT391-0020	281567, P0587-771-00020	L804	Nozzle – 2.0 mm	1
PT391-0020X	281567, P0587-771-00020	L30804	Nozzle – 2.0 mm (10 pack)	10
PT391-0025	P0587-772-00025	L805	Nozzle – 2.5 mm	1
PT391-0025X	P0587-772-00025	L30805	Nozzle – 2.5 mm (10 pack)	10



Consumables

Centricut part number	Reference number	Alternate reference	Description	Pkg qty
5" KN Sensor system				
1 TR302-2405	280408, 092405	AL53	Nozzle holder	1
PT344-0551	280551, P0494-853-00010	L292	Nozzle – 1.0 mm	1
PT344-0551X	280551, P0494-853-00010	L30292	Nozzle – 1.0 mm (10 pack)	10
PT344-0552	280552, P0494-854-00012	L293	Nozzle – 1.2 mm	1
PT344-0552X	280552, P0494-854-00012	L30293	Nozzle – 1.2 mm (10 pack)	10
PT344-0553	280553, P0494-855-00015	L294	Nozzle – 1.5 mm	1
PT344-0553X	280553, P0494-855-00015	L30294	Nozzle – 1.5 mm (10 pack)	10
PT344-0554	280554, P0494-856-00017	L295	Nozzle – 1.7 mm	1
PT344-0554X	280553, P0494-856-00017	L30295	Nozzle – 1.7 mm (10 pack)	10
2 PT344-0555	280555, P0494-855-00020	L296	Nozzle – 2.0 mm	1
PT344-0555X	280553, P0494-855-00015	L30296	Nozzle – 2.0 mm (10 pack)	10
PT344-9023		L372	Nozzle – 2.3 mm	1
PT344-9023X		L30372	Nozzle – 2.3 mm (10 pack)	10
PT344-0025		L371	Nozzle – 2.5 mm	1
PT344-0025X		L371X	Nozzle – 2.5 mm (10 pack)	10
PT344-0030		L304	Nozzle – 3.0 mm	1
PT344-0030X		L30304	Nozzle – 3.0 mm (10 pack)	10
PT344-0400		L303	Nozzle – 4.0 mm	1
PT344-0400X		L30303	Nozzle – 4.0 mm (10 pack)	10
DE M 1.5"				
PT379-0010	280943, P0494-787-00010	L1055	Nozzle – 1.0 mm KN	1
PT379-0010X	280943, P0494-787-00010	L301055	Nozzle – 1.0 mm KN (10 pack)	10
PT379-0012	280942, P0494-788-00012	L1056	Nozzle – 1.2 mm KN	1
PT379-0012X	280942, P0494-788-00012	L301056	Nozzle – 1.2 mm KN (10 pack)	10
3 PT379-0015	280941, P0494-789-00015	L1057	Nozzle – 1.5 mm KN	1
PT379-0015X	280941, P0494-789-00015	L301057	Nozzle – 1.5 mm KN (10 pack)	10
PT379-0018		L1058	Nozzle – 1.8 mm KN	1
PT379-0018X		L301058	Nozzle – 1.8 mm KN (10 pack)	10
PT379-0020		L1059	Nozzle – 2.0 mm KN	1
PT379-0020X		L301059	Nozzle – 2.0 mm KN (10 pack)	10

New items shown in bold



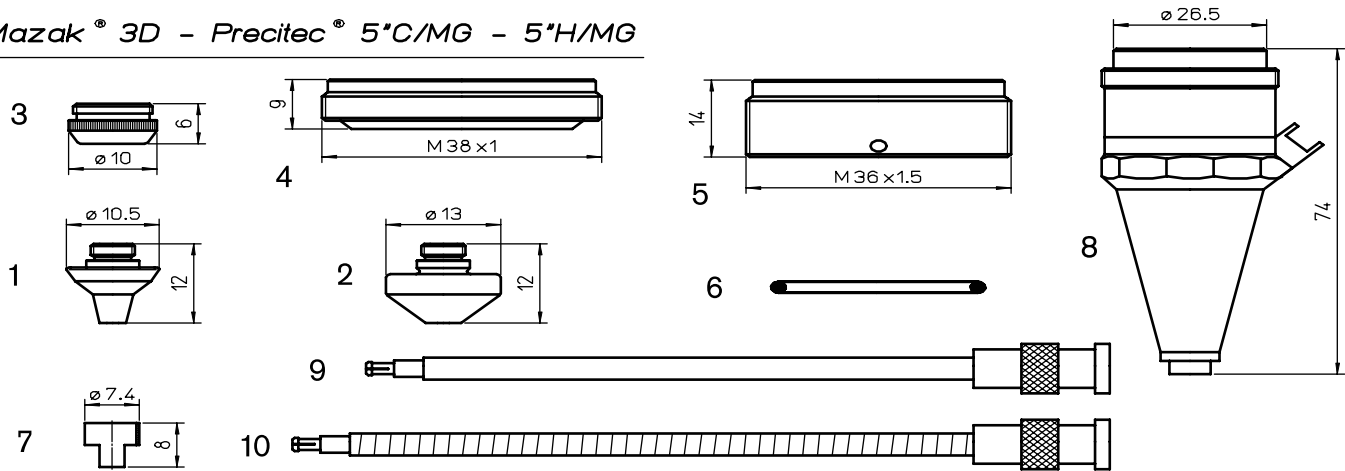
Consumables

	Centricut part number	Reference number	Alternate reference	Description	Pkg qty
5" K SENSOR SYSTEM					
1	PT344-0040	280040, P0492-752-00001	AL67	Nozzle holder KT M1.5" K OEM	1
	PT344-0048	280048, P0492-853-00010	L350	Nozzle – 1.0 mm	1
	PT344-0048X	280048, P0492-853-00010	L30350	Nozzle – 1.0 mm (10 pack)	10
	PT344-0049	280049, P0492-854-00012	L351	Nozzle – 1.2 mm	1
2	PT344-0049X	280049, P0492-854-00012	L30351	Nozzle – 1.2 mm (10 pack)	10
	PT344-0050	280050, P0492-855-00015	L352	Nozzle – 1.5 mm	1
	PT344-0050X	280050, P0492-855-00015	L30352	Nozzle – 1.5 mm (10 pack)	10
	PT344-0051	280050	L353	Nozzle – 2.0 mm	1
	PT344-0051X	280050	L30353	Nozzle – 2.0 mm (10 pack)	10
2.5" CM SENSOR SYSTEM					
3	PT344-1079	281079, P0492-430-00003, W149	AL138	OEM nozzle holder KTM1.5" S F2.5"	1
4	PT347-0100		AL352	Nozzle holder aluminum	1
	PT344-0013	280013, P0492-441-00008	L400	Nozzle – 0.8 mm	1
	PT344-0013X	280013, P0492-441-00008	L30400	Nozzle – 0.8 mm (10 pack)	10
	PT344-0014	280014, P0492-442-00010, W223	L401	Nozzle – 1.0 mm	1
	MB336-223X	280014, P0492-442-00010, W223	L30401	Nozzle – 1.0 mm (10 pack)	10
	PT344-0015	280015, P0492-443-00012	L402	Nozzle – 1.2 mm	1
	PT344-0015X	280015, P0492-443-00012	L30402	Nozzle – 1.2 mm (10 pack)	10
	MB336-224	280016, P0492-444-00015, W224	L403	Nozzle – 1.5 mm	1
	MB336-224X	280016, P0492-444-00015, W224	L30403	Nozzle – 1.5 mm (10 pack)	10
	PT344-0018	P0492-447-00018	L543	Nozzle – 1.8 mm	1
	PT344-0018X	P0492-447-00018	L30543	Nozzle – 1.8 mm (10 pack)	10
	PT344-0937	280937, P0492-445-00020, W225	L544	Nozzle – 2.0 mm	1
	MB336-225X	280937, P0492-445-00020, W225	L30544	Nozzle – 2.0 mm (10 pack)	10
5	PT344-0023	P0492-448-00023	L546	Nozzle – 2.3 mm	1
	PT344-0023X	P0492-448-00023	L30546	Nozzle – 2.3 mm (10 pack)	10
	MB336-226	281791, P0492-446-00025, W226	L545	Nozzle – 2.5 mm	1
	MB336-226X	281791, P0492-446-00025, W226	L30545	Nozzle – 2.5 mm (10 pack)	10
	MB336-0005		L547	Nozzle – 3.0 mm	1
	MB336-0005X		L30547	Nozzle – 3.0 mm (10 pack)	10
	PT344-0008CP	280013, P0492-441-00008	L400X	Nozzle – 0.8 mm CP	1
	PT344-0008CPX	280013, P0492-441-00008	L30400X	Nozzle – 0.8 mm CP (10 pack)	10
	PT344-0010CP	280014, P0492-442-00010, W223	L401X	Nozzle – 1.0 mm CP	1
	PT344-0010CPX	280014, P0492-442-00010, W223	L30401X	Nozzle – 1.0 mm CP (10 pack)	10
	PT344-0012CP		L402X	Nozzle – 1.2 mm CP	1
	PT344-0012CPX		L30402X	Nozzle – 1.2 mm CP (10 pack)	10
	PT344-0015CP	280016, P0492-444-00015, W224	L403X	Nozzle – 1.5 mm CP	1
	PT344-0015CPX	280016, P0492-444-00015, W224	L30403X	Nozzle – 1.5 mm CP (10 pack)	10

Consumables

Centricut part number	Reference number	Alternate reference	Description	Pkg qty
2.5" CM SENSOR SYSTEM continued				
PT344-0018CP	P0492-447-00018	L543X	Nozzle – 1.8 mm CP	1
PT344-0018CPX	P0492-447-00018	L30543X	Nozzle – 1.8 mm CP (10 pack)	10
PT344-0022CP	280937, P0492-445-00020, W225	L544X	Nozzle – 2.0 mm CP	1
PT344-0022CPX	280937, P0492-445-00020, W225	L30544X	Nozzle – 2.0 mm CP (10 pack)	10
5 PT344-0023CP	P0492-448-00023	L546X	Nozzle – 2.3 mm CP	1
PT344-0023CPX	P0492-448-00023	L30546X	Nozzle – 2.3 mm CP (10 pack)	10
PT344-0025CP	281791, P0492-446-00025, W226	L545X	Nozzle – 2.5 mm CP	1
PT344-0025CPX	281791, P0492-446-00025, W226	L30545X	Nozzle – 2.5 mm CP (10 pack)	10
PT344-0027CP		L547X	Nozzle – 3.0 mm CP	1
PT344-0027CPX		L30547X	Nozzle – 3.0 mm CP (10 pack)	10

Mazak[®] 3D - Precitec[®] 5°C/MG - 5°H/MG



Consumables

Centricut part number	Reference number	Alternate reference	Description	Pkg qty
PT347-0005	46713300290-10	L554	Nozzle - 1.0 mm 3D	1
PT347-0005X	46713300290-10	L30554	Nozzle - 1.0 mm 3D (10 pack)	10
PT347-0290-1.2	46713300290-12	L555	Nozzle - 1.2 mm 3D	1
PT347-0090X	46713300290-12	L30555	Nozzle - 1.2 mm 3D (10 pack)	10
PT347-0290	46713300290-15, P0352-381-00015	L556	Nozzle - 1.5 mm 3D	1
PT347-0290X	46713300290-15, P0352-381-00015	L30556	Nozzle - 1.5 mm 3D (10 pack)	10
PT347-0118		L557	Nozzle - 1.8 mm 3D	1
PT347-0118X		L30557	Nozzle - 1.8 mm 3D (10 pack)	10
1 PT347-0280	46713300310, P0352-382-00020	L558	Nozzle - 2.0 mm 3D	1
PT347-0280X	46713300310, P0352-382-00020	L30558	Nozzle - 2.0 mm 3D (10 pack)	10
PT347-0001	46713300280-25	L560	Nozzle - 2.5 mm 3D	1
PT347-0001X	46713300280-25	L30560	Nozzle - 2.5 mm 3D (10 pack)	10
PT347-0002	46713300280-30, 46713300430	L563	Nozzle - 3.0 mm 3D	1
PT347-0002X	46713300280-30	L30563	Nozzle - 3.0 mm 3D (10 pack)	10
PT347-0035	46713300280-35	L564	Nozzle - 3.5 mm 3D	1
PT347-0035X	46713300280-35	L30564	Nozzle - 3.5 mm 3D (10 pack)	10
PT347-0004		L576	Nozzle - 1.0 mm 2D	1
PT347-0004X		L30576	Nozzle - 1.0 mm 2D (10 pack)	10
PT347-0310-1.2	46713300310	L577	Nozzle - 1.2 mm 2D	1
PT347-0012X	46713300310	L30577	Nozzle - 1.2 mm 2D (10 pack)	10
PT347-0310	P0352-386-00015	L578	Nozzle - 1.5 mm 2D	1
PT347-0310X	P0352-386-00015	L30578	Nozzle - 1.5 mm 2D (10 pack)	10
PT347-1018		L579	Nozzle - 1.8 mm 2D	1
2 PT347-1018X		L30579	Nozzle - 1.8 mm 2D (10 pack)	10
PT347-0300	46713300300, P0352-387-00020	L580	Nozzle - 2.0 mm 2D	1
PT347-0300X	46713300300, P0352-387-00020	L30580	Nozzle - 2.0 mm 2D (10 pack)	10
PT347-0003	46713300300-25	L581	Nozzle - 2.5 mm 2D	1
PT347-0003X	46713300300-25	L30581	Nozzle - 2.5 mm 2D (10 pack)	10
PT347-0006	46713300300-30	L582	Nozzle - 3.0 mm 2D	1
PT347-0006X	46713300300-30	L30582	Nozzle - 3.0 mm 2D (10 pack)	10
3 PT347-0320	46713300321, P0352-311-00001	AL160	Union nut - VespeI [®]	1
4 PT347-4297	P0492-702-00001, 29100021	AL198	Insulating ring	1
5 PT347-0008	46713330200	AL218	Insulator 5-axis	1
6 AM326-6453	71366453	AL94	Outer nozzle o-ring	1
7 PT347-0009		AL256	Insulator collar	1
8 PT347-0007	P0354-110-00002/00001, P0354-130-00001	AL211	OEM nozzle body SE M2.5"HN2	1
9 PT347-0101	P0360-100-00500, 46713300100	AL204	Sensor cable 500 mm (OEM)	1
10 PT347-1386	281386, P0360-155-00500	AL257	Sensor cable	1
PT347-0600OEM (not shown)			Sensor cable ZWW 600 (OEM) 265 mm	1
PT347-0450 (not shown)	P0497-002-00450	AL202	Sensor cable 450 mm	1
PT347-0181 (not shown)	46743300181	AL358	Sensor cable 305 mm	1
PT311-0787 (not shown)	280787, P48413300001		Insulating ring	1
PT347-0520 (not shown)	P0591-520-00001		Insulating plate	1
PT347-0930 (not shown)	P0591-930-0001		Spatter protection plate	1

New items shown in bold

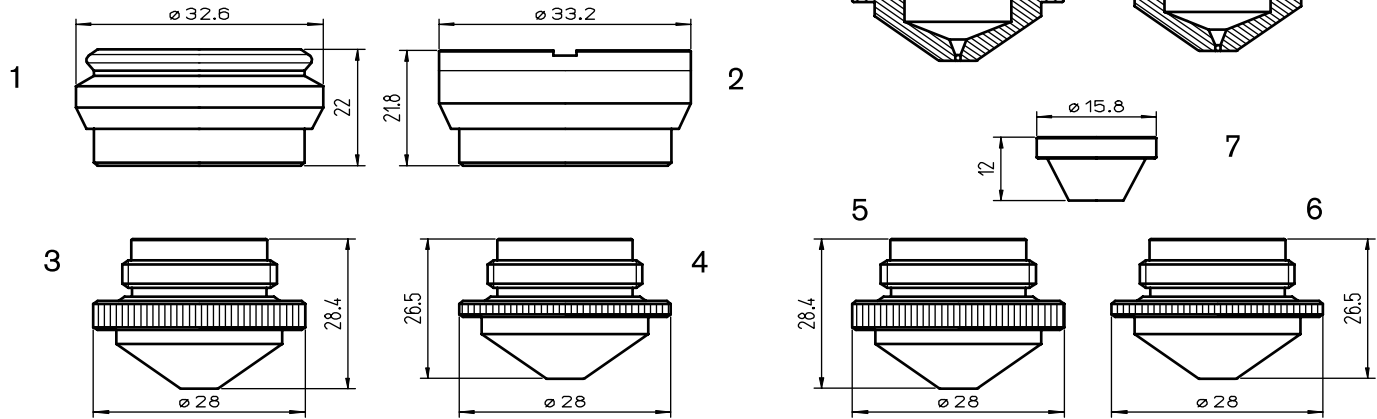
Centricut is a registered trademark of Hypertherm, Inc. and may be registered in the United States and/or other countries. All other trademarks are the properties of their respective owners. Centricut is in no way affiliated with Precitec.



Consumables

Centricut part number	Reference number	Alternate reference	Description	Pkg qty
PT347-1005	281005, P0352-323-00010	L480	Nozzle – 1.0 mm	1
PT347-1005X	281005, P0352-323-00010	L30480	Nozzle – 1.0 mm (10 pack)	10
PT347-1034	281034, P0352-324-00012	L481	Nozzle – 1.2 mm	1
PT347-1034X	281034, P0352-324-00012	L30481	Nozzle – 1.2 mm (10 pack)	10
PT347-1013	281013, P0352-325-00015	L482	Nozzle – 1.5 mm	1
PT347-1013X	281013, P0352-325-00015	L30482	Nozzle – 1.5 mm (10 pack)	10
1 PT347-0899	280899, P0352-326-00018	L483	Nozzle – 1.8 mm	1
PT347-0899X	280899, P0352-326-00018	L30483	Nozzle – 1.8 mm (10 pack)	10
PT347-0044-3	350044.3, P0352-327-00020	L484	Nozzle – 2.0 mm	1
PT347-0044X	350044.3, P0352-327-00020	L30484	Nozzle – 2.0 mm (10 pack)	10
PT347-1025	P0352-328-00025	L485	Nozzle – 2.5 mm	1
PT347-1025X	350044.3, P0352-328-00025	L30485	Nozzle – 2.5 mm (10 pack)	10
PT347-1006	281006, P0352-333-00010	L486	Nozzle – 1.0 mm	1
PT347-1006X	281006, P0352-333-00010	L30486	Nozzle – 1.0 mm (10 pack)	10
PT347-1030	281030, P0352-334-00012	L487	Nozzle – 1.2 mm	1
PT347-1030X	281030, P0352-334-00012	L30487	Nozzle – 1.2 mm (10 pack)	10
PT347-1031	281031, P0352-335-00015	L488	Nozzle – 1.5 mm	1
2 PT347-1031X	281031, P0352-335-00015	L30488	Nozzle – 1.5 mm (10 pack)	10
PT347-0898	280898, P0352-336-00018	L489	Nozzle – 1.8 mm	1
PT347-0898X	280898, P0352-336-00018	L30489	Nozzle – 1.8 mm (10 pack)	10
PT347-1020	P0352-336-00020	L490	Nozzle – 2.0 mm	1
PT347-1020X	P0352.336.00020	L30490	Nozzle – 2.0 mm (10 pack)	10

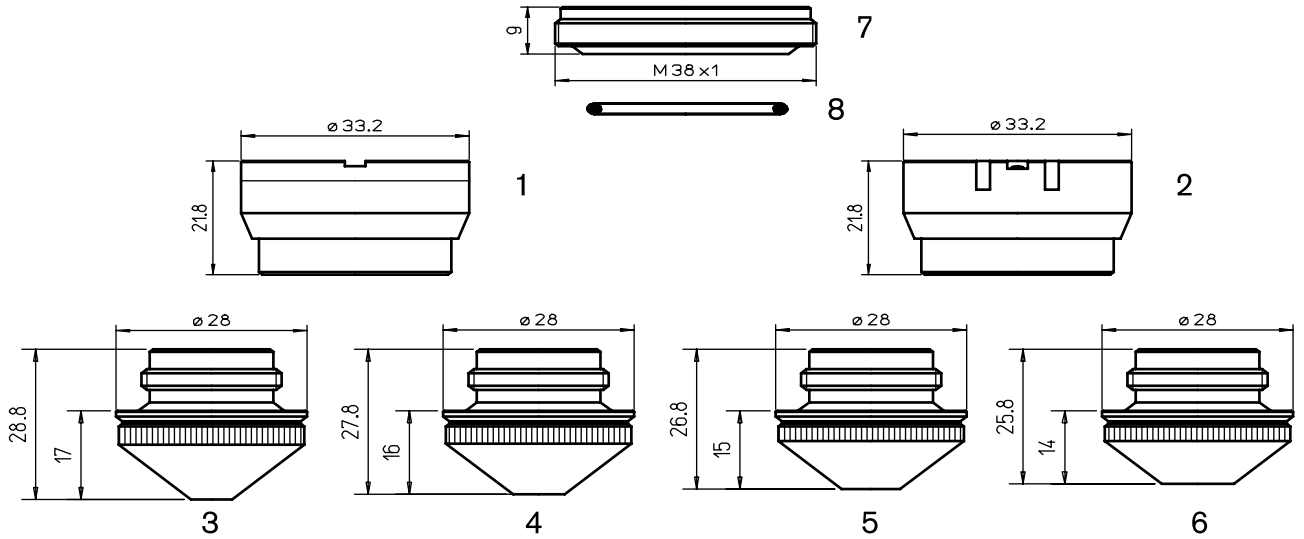
5"DX - 5"DXN PRECITEC[®] SENSOR SYSTEM



Consumables

Centricut part number	Reference number	Alternate reference	Description	Pkg qty
1 PT311-0831	280831, P0492-622-00002	AL35	Nozzle holder KT A1.5"DX - ceramic	1
2 PT311-0565	280565, P0497-605-00001, 29100106	AL40	Nozzle holder, KTM 1.5" DXN	1
3 PT311-0002		L87	Nozzle - 0.8 mm	1
3 PT311-0110		L10	Nozzle - 1.25 mm	1
3 PT311-0004		L90	Nozzle - 1.5 mm	1
4 PT311-0005		L40	Nozzle - 1.5 mm HD	1
4 PT311-0006		L186	Nozzle - 1.8 mm HD	1
5 PT311-0007	Centricut design	L187	Nozzle - 0.8 mm	1
5 PT311-0008	Centricut design	L188	Nozzle - 1.25 mm	1
5 PT311-0009	Centricut design	L189	Nozzle - 1.5 mm	1
6 PT311-1010	Centricut design	L190	Nozzle - 1.5 mm	1
6 PT311-0011	Centricut design	L191	Nozzle - 1.8 mm	1
7 LV418-0001	Centricut design	L157	Inner nozzle	1

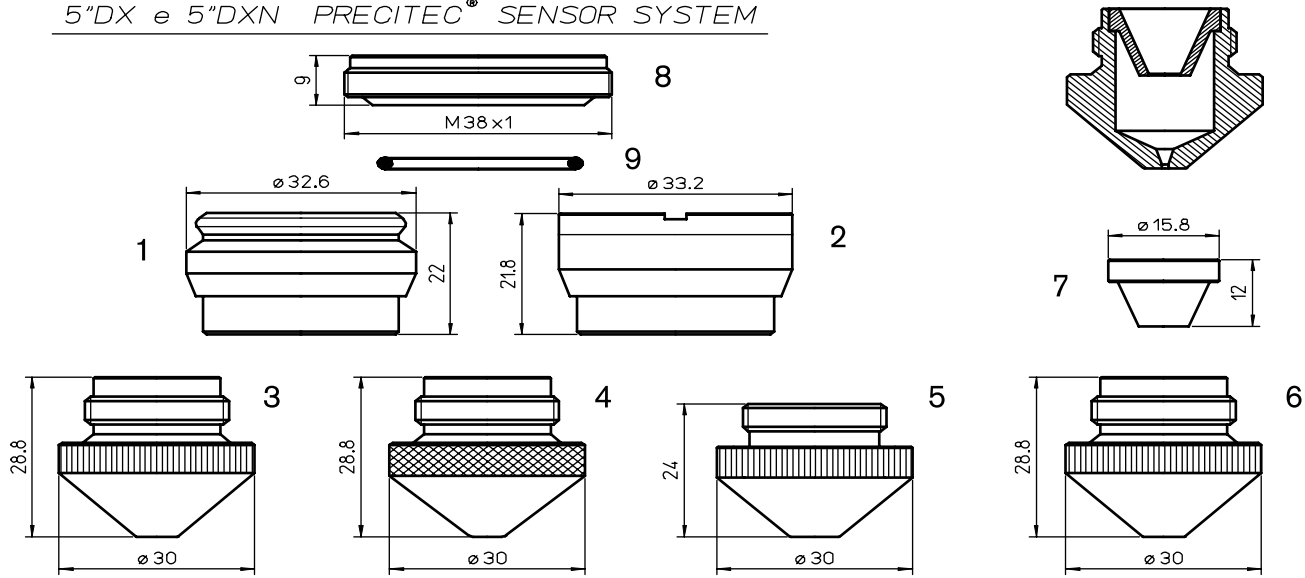
5" DXN - 5" DL SENSOR SYSTEM



Consumables

	Centricut part number	Reference number	Alternate reference	Description	Pkg qty
1	PT311-0565	280565, P0497-605-00001, 29100106	AL40	Nozzle holder, KTM 1.5" DXN	1
2	PT311-1146	281146, P0380-211-00001, 29100033	AL130/S	Nozzle holder, ITM 1.5" DZ	1
	PT311-1146 OEM	281146, P0380-211-00001, 29100033	AL130	Nozzle holder, ITM 1.5" DZ (OEM)	1
3	PT376-0010	280029, P0492-628-00010	L365	Nozzle - 1.0 mm	1
	PT376-0012	280030, P0492-629-00012	L366	Nozzle - 1.2 mm	1
4	PT376-0015	280028, P0492-627-00015	L367	Nozzle - 1.5 mm	1
5	PT376-0017	281384, P0492-630-00017	L368	Nozzle - 1.7 mm	1
	PT376-0020	280027, P0492-626-00020	L369	Nozzle - 2.0 mm	1
6	PT376-0025	280026, P0492-625-00025	L370	Nozzle - 2.5 mm	1
7	PT311-0001	P0492-702-00002	AL201	Insulating ring	1
8	AM326-6453	71366453	AL94	Outer nozzle o-ring	1

5"DX e 5"DXN PRECITEC[®] SENSOR SYSTEM



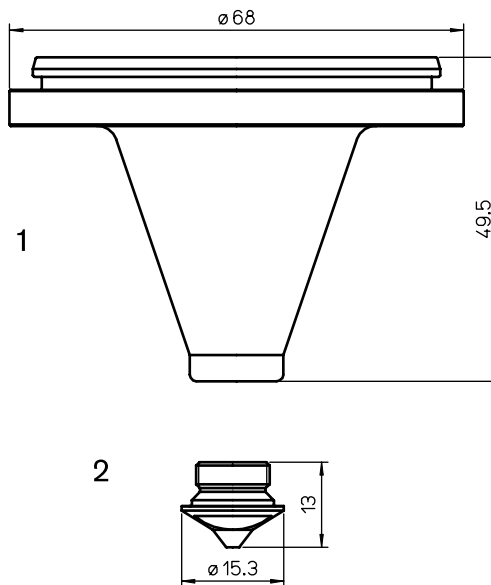
Consumables

Centricut part number	Reference number	Alternate reference	Description	Pkg qty
1 PT311-0831	280831, P0492-622-00002	AL35	Nozzle holder KT A1.5"DX – ceramic	1
2 PT311-0565	280565, P0497-605-00001, 29100106	AL40	Nozzle holder, KTM 1.5" DXN	1
	PT311-0010	L163	Nozzle – 1.0 mm	1
	PT311-0012	L164	Nozzle – 1.2 mm	1
	PT311-0015	L165	Nozzle – 1.5 mm	1
3 PT311-0020	281270, P0380-254-00020	L166	Nozzle – 2.0 mm	1
	PT311-0025	L167	Nozzle – 2.5 mm	1
	PT311-0027	L462	Nozzle – 2.7 mm	1
	PT311-0030	L201	Nozzle – 3.0 mm	1
4 BA372-0405		L887	Nozzle – 1.5 mm	1
5 PT311-0013	281029L	L921	Nozzle – 1.0 mm	1
	PT311-0014	L920	Nozzle – 2.0 mm (w/counter bore)	1
	PT311-1002	L259	Nozzle – 1.0 mm HD	1
	PT311-0003	L260	Nozzle – 1.2 mm HD	1
6 PT311-1004	Centricut design	L261	Nozzle – 1.5 mm HD	1
	PT311-1005	L262	Nozzle – 2.0 mm HD	1
	PT311-1006	L263	Nozzle – 2.5 mm HD	1
	PT311-1007	L264	Nozzle – 3.0 mm HD	1
7 LV418-0001	Centricut design	L157	Inner nozzle	1
8 PT311-0001	P0492-702-00002	AL201	Insulating ring	1
9 AM326-6453	71366453	AL94	Outer nozzle o-ring	1

Consumables

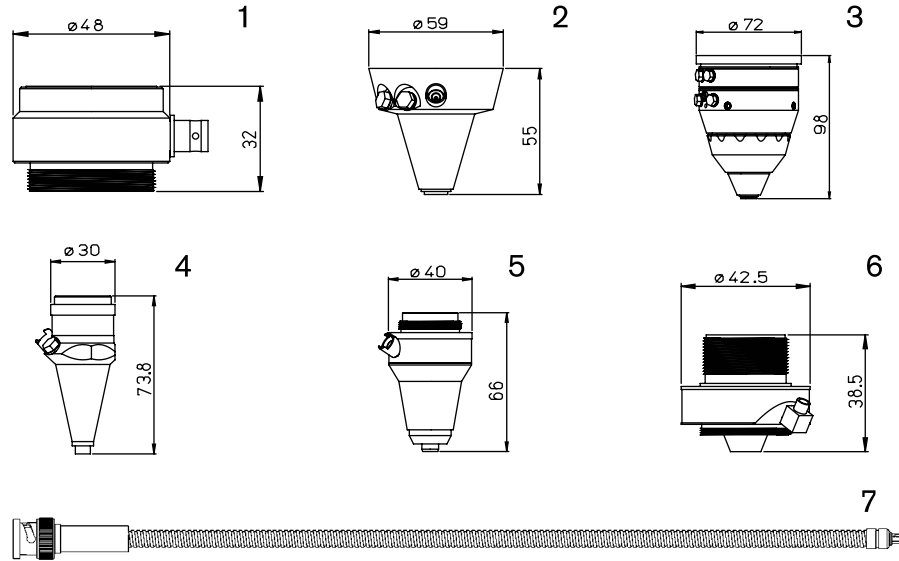
Centricut part number	Reference number	Alternate reference	Description	Pkg qty
PRECITEC[®] original spare parts				
PT347-0010	P059110500001		Connector head OEM	1
PT347-0011	P038013000001		Nozzle body SE M1.5" DZ/S OEM	1
PT347-0012	P049713000001		Nut M1.5" DXN OEM	1
PT347-0200	P049700200200		Cable 200 mm OEM	1
PT347-0000	P0251107000001	OG Y D50 d2 HII	Protecting glass	1
PT347-0014	P036015000300	KE 300 gw Z mm	Sensor cable OEM	1
PT347-0015	P059159000001		Preamplifier HP OEM	1
PT347-0016	P059177000001		Electrode tacitile OEM	1
PT347-0017	P059132900001	ZM HP1.5" DR	Seal 1.5" OEM	1
PT347-0018	P0BMO0001124KF	ZM HP1.5" DF	Seal 1.5" OEM	1
PT347-0019	P00380-110-00002	P38011000002	Sensor M1.5" DZ OEM	1
PT347-0021	P059451000001		Sensor SE HP 2.0" OEM	1
PT347-0022	P059158000001	281617	Socket ZM HP 1.5" IB OEM	1
PT347-0023	P059192000001	281395	Seals (set) ZM HP1.5" DS OEM	1
PT347-1439	P0591-360-0001		Lens ring set	1
PT347-1383	P0591-490-0001	281395	Nut tray	1
PT347-0130 (not shown)	P0492-001-00130		Electrode cable, KE 130 GW	1
PT347-0220 (not shown)	P0464-810-00220		Electrode cable, KE 220 GGMM	1
PT347-0024 (not shown)	P0497-110-00001		Sensor insert	1

New items shown in bold



Consumables

Centricut part number	Reference number	Alternate reference	Description	Pkg qty
ZE SE YK 52 Z				
1 PT401-0001	P0587-440-00001	AL244	Nozzle holder YKZ	1
PT401-1008	P0587-842-00008	L1012	Nozzle – 0.8 mm	1
2 PT401-0010	P0587-841-00010	L1013	Nozzle – 1.0 mm	1
PT401-0015	P0587-846-00015	L1014	Nozzle – 1.5 mm	1
PT347-0000	P251107000001	OG Y D50 d2 HII	Protecting glass	1



Sensor repairs available in select regions only.

Consumables

Centricut part number	Reference number	Alternate reference	Description	Pkg qty
1 MB999-429A	W429A		Sensor repair W429A	1
MB999-239	W239		Sensor repair W239	1
2 PT999-YH27	P0589-800-00001		Sensor repair YH27	1
3 PT999-YR30	YR-30		Sensor repair YR-30	1
PT999-HNZ	P0354-110-00001		Sensor repair HNZ	1
4 PT999-HP2	281672		Sensor repair HP/HP2	1
PT999-DZ	281145		Sensor repair DZ	1
5 PT999-KN	280549		Sensor repair KN	1
6 PT999-25ZJ	P0361-203-00001		Sensor repair 25ZJ	1
7 PT347-0101A	P0360-100-00500		Sensor cable – armored 500 mm	1
PT347-0250 (not shown)	P0492-001-00250		Sensor cable – armored 250 mm	1

Optics

Centricut part number	Reference number	Type	Diameter	Focal length	Edge thickness	
Lenses						
PT317-2550	562550	NEG-MEN	0.5"	1.658"	.074"	
PT317-0002	406294	MEN	1.5"	5.0"	.290"	
PT317-0001	452726	MEN	1.5"	7.5"	.125"	
PT317-6326	206326	MEN	2.0"	5.0"	.378"	
PT317-8275	628275	PLX	2.0"	10.0"	.310"	
PT317-0537	960537	PLX	2.0"	10.0"	.380"	
PT317-9527	779527	PLX	2.0"	10.0"	.500"	
Centricut part number	Reference number	Type	Material	Diameter	Edge thickness	S1
Zero phase shift mirrors and total reflectors						
PT317-6200	416200	MMR	CU	1.969"	.984"	WC
PT317-7137	483962	MMR	CU	2.00"	.394"	5.7MCX
PT317-3098	690641	MMR	CU	2.00"	.394"	6.0MCC
PT317-1610	816101	MMR	CU	2.36"	.984"	WC/FTGS
PT317-7496	187496	PS	CU	1.969"	.984"	WC/FTGS
PT317-6392	886392	PS	CU	2.36"	.984"	WC/FTGS
PT317-8680	748680	PS	CU	3.0"	.500"	
PT317-4069	744069	PS	CU	3.0"	.591"	
PT317-3811	213811	TRZ	CU	1.96"	.394"	CA-HOLE

New items shown in bold

Centricut is a registered trademark of Hypertherm, Inc. and may be registered in the United States and/or other countries. All other trademarks are the properties of their respective owners. Centricut is in no way affiliated with Precitec.

Optics

Centricut part number	Reference number	Type	Material	Diameter	Edge thickness	S1
Zero phase shift mirrors and total reflectors (continued)						
PT317-7599	837599	TRZ	CU	1.969"	.984"	WC
PT317-9495	119495	TRZ	CU	1.969"	.984"	WC/FTGS
PT317-6156	516156	TRZ	CU	2.362"	.394"	
PT317-6494	586494	TRZ	CU	3.0"	.591"	
PT317-8825	408825	MMR	SI	2.0"	.200"	PO/FG
PT317-2132	582132	PS	SI	2.0"	1.96"	
PT317-6922	756922	TRZ	SI	3.0"	.250"	22.5DEG AOI
PT317-7197	917197	PS	SI	3.0"	.250"	
PT317-1534	341534	TRZ	SI	2.0"	.200"	45DEG

Centricut part number	Reference number	Material	Diameter	Edge thickness	S1/Reflectivity	S2
Output couplers						
PT317-6893	696893	ZNSE	1.0"	.200"	10MCC/6MCX 65%	
PT317-5408	885408	ZNSE	1.1"	.236"	20MCC	
PT317-4883	61683	ZNSE	1.5"	.236"	15MCC-40%	
PT317-2030	652030	ZNSE	1.5"	.315"	15MCC-40%	

Centricut part number	Reference number	Material	Diameter	Edge thickness	S1/Reflectivity	S2
Rear mirrors						
PT317-3685	933685	GE	1.1"	.120"	15MCC	
PT317-7692	907692	GE	1.5"	.315"	15MCC-99.5%	

Optics care

Centricut part number	Reference number	Description	Pkg qty
TR300-6452	N/A	CO ₂ Lens paper (50 sheets)	1
TR300-SC20		Cotton swab – 20 piece	1
TR300-1115		Lens cleaning pre-cut cotton –100 piece	1
TR300-1010	AL1010	Dropper, lens cleaning fluid	1
TR300-255	AL255	Loupe, magnifying	1
TR300-271	AL271	Base, lens maintenance	1
TR300-7388	787388	Mirror polish (250 ml)	1

New items shown in bold



Broadest product line in the industry!



Hypertherm, Inc.
Hanover, NH 03755 USA
603-643-3441 Tel

Hypertherm Europe B.V.
4704 SE Roosendaal, Nederland
31 165 596907 Tel

**Hypertherm (Shanghai)
Trading Co., Ltd.**
PR China 200052
86-21 5258 3330 /1 Tel

Hypertherm (S) Pte Ltd.
Singapore 349567
65 6 841 2489 Tel

**Hypertherm (India) Thermal
Cutting Pvt. Ltd.**
Chennai, Tamil Nadu
91 0 44 2834 5361 Tel

Hypertherm Brasil Ltda.
Guarulhos, SP - Brasil
55 11 2409 2636 Tel

Hypertherm México, S.A. de C.V.
México, D.F.
52 55 5681 8109 Tel

www.hypertherm.com



Hypertherm[®]

Cut with confidence[®]