



CO₂ laser consumables – Salvagnini®



Hypertherm®

Highest quality products

- OEM quality
- OEM-approved optics
- 100% satisfaction guarantee

Technical service

OEM-trained technicians on staff with over 25 years of experience.

Free application support for all laser OEMs.

We stand behind our products with industry-leading technical expertise.

Chemical code key

Lens

PFL	Pre-focus
MEN	Meniscus
PLX	Plano-convex
MTD	Mounted
Not MTD	Not mounted
LA	Low absorption
PO	Plano

Mirrors

CU	Copper
GAAS	Gallium arsenide
SI	Silicon
GE	Germanium
ZNSE	Zinc-selenide
PS	Phase shift
MMR	Maximum metal reflector
ATFR	Absorbing thin film reflector
TRZ	Total reflector – zero phase shift
ZPS	Zero phase shift
OC	Output coupler
RM	Rear mirror
COL-I	Collimator input
COL-O	Collimator output
AO	Adaptive optic
MO	Molybdenum
UC	Uncoated
MCX	Convex
MCC	Concave

Measurements

DIA	Diameter
FL	Focal length
ET	Edge thickness

Nozzles

CP	Chrome plated
HD/HP	High density/high pressure

Product is available for the following major OEM brands

Amada®

Behrens®

Bystronic®

Cincinnati®

Finn-Power®

GHT-SHT®

Haas®

Haco®

Hankwang®

Laserdyne®

Laser Lab®

LVD®

Mazak®

Mitsubishi®

Murata Wiedemann® – Fanuc®

Niigata®

NTC® – Beyeler®

Precitec®

Prima Industrie®

Raskin®

Rouchaud®

Salvagnini®

Strippit®

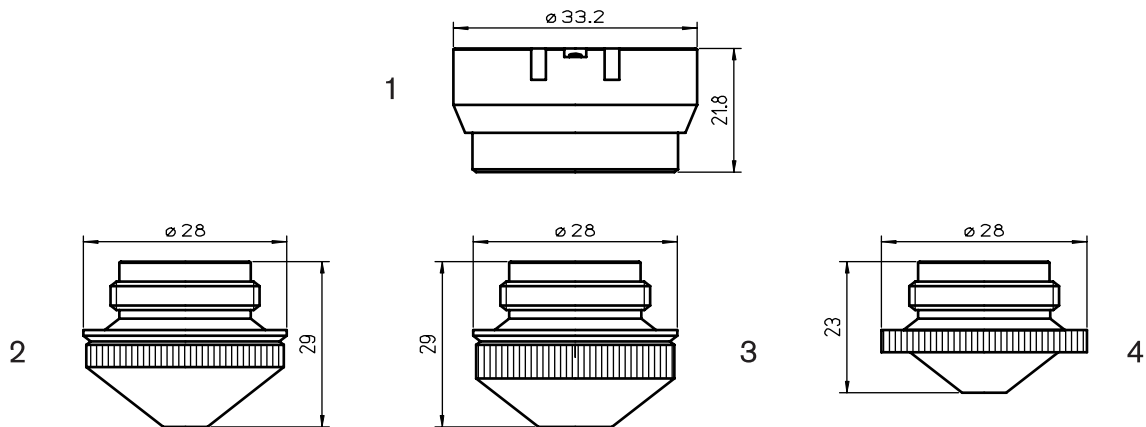
Tanaka®

Thyssen®

Trumpf®

Valfiv®

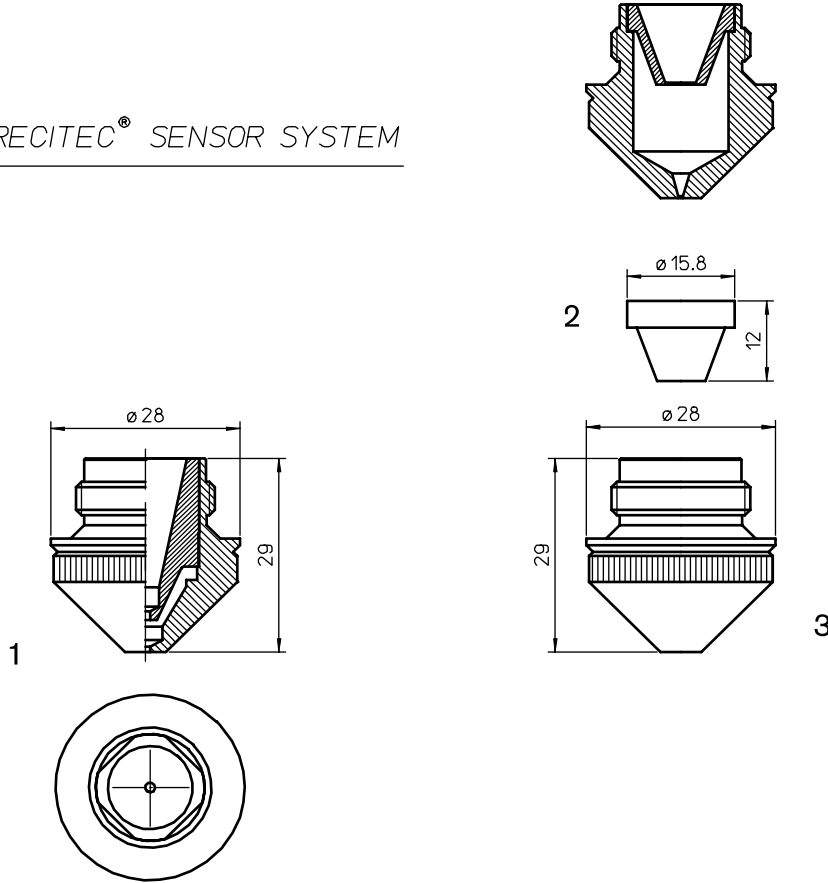
5"DL PRECITEC[®] SENSOR SYSTEM



Consumables

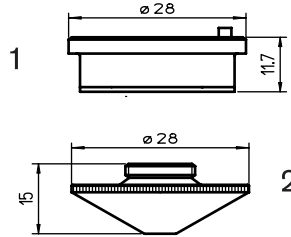
	Centricut part number	Reference number	Alternate reference	Description	Pkg qty
1	PT311-1146	281146, P0380-211-00001, 29100033	AL130/S	Nozzle holder, ITM 1.5" DZ	1
	PT311-1146 OEM	281146, P0380-211-00001, 29100033	AL130	Nozzle holder, ITM 1.5" DZ (OEM)	1
	SA365-00A4	141300A4	L374	Nozzle – 0.75 mm	1
	SA365-01A4	146331A4	L375	Nozzle – 1.0 mm	1
	SA365-30A4	146330A4	L376	Nozzle – 1.25 mm	1
	SA365-97A4	146329A4, 142321A4	L377	Nozzle – 1.5 mm	1
	SA365-98A4	146328A4	L378	Nozzle – 1.75 mm	1
	SA365-99A4	146327A4, 142322A4	L379	Nozzle – 2.0 mm	1
	SA365-25A4	146326A4	L381	Nozzle – 2.25 mm	1
	SA365-26A4	146325A4, 142324A4	L380	Nozzle – 2.5 mm	1
	SA365-24A4	146324A4	L888	Nozzle – 2.75 mm	1
	SA365-23A4	146323A4	L889	Nozzle – 3.0 mm	1
2	SA365-00A4CP	141300A4	L374X	Nozzle – 0.75 mm CP	1
	SA365-01A4CP	146331A4	L375X	Nozzle – 1.0 mm CP	1
	SA365-30A4CP	146330A4	L376X	Nozzle – 1.25 mm CP	1
	SA365-97A4CP	146329A4	L377X	Nozzle – 1.5 mm CP	1
	SA365-98A4CP	146328A4	L378X	Nozzle – 1.75 mm CP	1
	SA365-99A4CP	146327A4	L379X	Nozzle – 2.0 mm CP	1
	SA365-26A4CP	146326A4	L381X	Nozzle – 2.25 mm CP	1
	SA365-25A4CP	146325A4	L380X	Nozzle – 2.5 mm CP	1
	SA365-24A4CP	146324A4	L888X	Nozzle – 2.75 mm CP	1
	SA365-23A4CP	146323A4	L889X	Nozzle – 3.0 mm CP	1
3	SA365-0001		L570	Nozzle – 1.2 mm	1
	SA365-51A4	144151A4	L1000	Nozzle – 2.0 mm short	1
	SA365-125A4	144125A4	L1001	Nozzle – 2.25 mm short	1
4	SA365-52A4	144152A4	L1002	Nozzle – 2.5 mm short	1
	SA365-57A4	144057A4	L1005	Nozzle – 2.75 mm short	1
	SA365-53A4	144153A4	L1003	Nozzle – 3.0 mm short	1

5"DL PRECITEC[®] SENSOR SYSTEM



Consumables

Centricut part number	Reference number	Alternate reference	Description	Pkg qty
SA423-0001	Centricut design	L988X	Nozzle – 1.0 mm double CP	1
SA423-0002	Centricut design	L989X	Nozzle – 1.25 mm double CP	1
SA423-0003	Centricut design	L990X	Nozzle – 1.5 mm double CP	1
SA423-0004	Centricut design	L991X	Nozzle – 1.75 mm double CP	1
1 SA423-0005	Centricut design	L992X	Nozzle – 2.0 mm double CP	1
SA423-0006	Centricut design	L993X	Nozzle – 2.25 mm double CP	1
SA423-0007	Centricut design	L994X	Nozzle – 2.5 mm double CP	1
SA423-0008	Centricut design	L995X	Nozzle – 2.7 mm double CP	1
SA423-0009	Centricut design	L996X	Nozzle – 3.0 mm double CP	1
2 LV418-0001	Centricut design	L157	Inner nozzle	1
SA423-0010	Centricut design	L772	Nozzle – 0.75 mm F/I	1
SA423-0011	Centricut design	L773	Nozzle – 1.0 mm F/I	1
SA423-0012	Centricut design	L774	Nozzle – 1.25 mm F/I	1
3 SA423-0013	Centricut design	L775	Nozzle – 1.5 mm F/I	1
SA423-0014	Centricut design	L776	Nozzle – 1.75 mm F/I	1
SA423-0015	Centricut design	L777	Nozzle – 2.0 mm F/I	1
SA423-0016	Centricut design	L778	Nozzle – 2.5 mm F/I	1



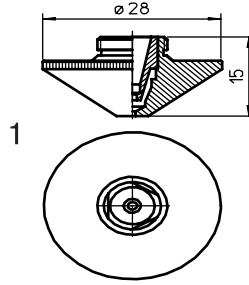
SALVAGNINI[®] L1

PRECITEC[®] DE HP 1.5"

Consumables

Centricut part number	Reference number	Alternate reference	Description	Pkg qty
1 PT348-1330	281330, P0571-260-00001	AL131	Nozzle holder – ceramic	1
PT348-1051	P0571-1051-00001	AL355	Nozzle holder – KT B2"	1
PT345-0008		L935	Nozzle – 0.8 mm HD	1
PT345-1548	281548, P0591-571-00010	L234	Nozzle – 1.0 mm HD	1
PT345-1549	281549, P0591-572-00012	L235	Nozzle – 1.25 mm HD	1
PT345-1463	281463, P0591-573-00015	L236	Nozzle – 1.5 mm HD	1
PT345-0001	P0591-574-00018	L237	Nozzle – 1.8 mm HD	1
PT345-1550	281550, P0591-575-00020	L238	Nozzle – 2.0 mm HD	1
PT345-0003		L239	Nozzle – 2.3 mm HD	1
PT345-1551	281551, P0591-576-00025	L240	Nozzle – 2.5 mm HD	1
PT345-1552		L936	Nozzle – 2.75 mm HD	1
PT345-0002		L241	Nozzle – 3.0 mm HD	1
PT345-0005		L826	Nozzle – 3.2 mm HD	1
PT345-0006		L827	Nozzle – 3.5 mm HD	1
PT345-0004		L828	Nozzle – 4.0 mm HD	1
2 PT345-0007		L829	Nozzle – 4.5 mm HD	1
PT345-1548CP	281548, P0591-571-00010	L234X	Nozzle – 1.0 mm HD CP	1
PT345-1549CP	281549, P0591-572-00012	L235X	Nozzle – 1.25 mm HD CP	1
PT345-1463CP	281463, P0591-573-00015	L236X	Nozzle – 1.5 mm HD CP	1
PT345-0001CP		L237X	Nozzle – 1.8 mm HD CP	1
PT345-1550CP	281550, P0591-575-00020	L238X	Nozzle – 2.0 mm HD CP	1
PT345-0003CP		L239X	Nozzle – 2.3 mm HD CP	1
PT345-1551CP	281551, P0591-576-00025	L240X	Nozzle – 2.5 mm HD CP	1
PT345-1552CP		L936X	Nozzle – 2.75 mm HD CP	1
PT345-0002CP		L241X	Nozzle – 3.0 mm HD CP	1
PT345-0005CP		L826X	Nozzle – 3.2 mm HD CP	1
PT345-0006CP		L827X	Nozzle – 3.5 mm HD CP	1
PT345-0004CP		L828X	Nozzle – 4.0 mm HD CP	1
PT345-0007CP		L829X	Nozzle – 4.5 mm HD CP	1

New items shown in bold



SALVAGNINI[®] L1

PRECITEC[®] DE HP 1.5"

Consumables

Centricut part number	Reference number	Alternate reference	Description	Pkg qty
PT358-0669	Centricut design	L669	Nozzle – 0.8 mm double	1
PT358-0010	Centricut design	L660	Nozzle – 1.0 mm double	1
PT358-0125	Centricut design	L661	Nozzle – 1.25 mm double	1
PT358-0015	Centricut design	L662	Nozzle – 1.5 mm double	1
PT358-0018	Centricut design	L663	Nozzle – 1.8 mm double	1
PT358-0020	Centricut design	L664	Nozzle – 2.0 mm double	1
PT358-0023	Centricut design	L665	Nozzle – 2.3 mm double	1
PT358-0007	Centricut design	L666	Nozzle – 2.5 mm double	1
PT358-0030	Centricut design	L667	Nozzle – 3.0 mm double	1
1 PT358-0035	Centricut design	L668	Nozzle – 3.5 mm double	1
PT358-0010CP	Centricut design	L660X	Nozzle – 1.0 mm double CP	1
PT358-0125CP	Centricut design	L661X	Nozzle – 1.25 mm double CP	1
PT358-0015CP	Centricut design	L662X	Nozzle – 1.5 mm double CP	1
PT358-0018CP	Centricut design	L663X	Nozzle – 1.8 mm double CP	1
PT358-0020CP	Centricut design	L664X	Nozzle – 2.0 mm double CP	1
PT358-0023CP	Centricut design	L665X	Nozzle – 2.3 mm double CP	1
PT358-0025CP	Centricut design	L666X	Nozzle – 2.5 mm double CP	1
PT358-0030CP	Centricut design	L667X	Nozzle – 3.0 mm double CP	1
PT358-0035CP	Centricut design	L668X	Nozzle – 3.5 mm double CP	1

Optics care

Centricut part number	Reference number	Description	Pkg qty
TR300-6452	N/A	CO ₂ Lens paper (50 sheets)	1
TR300-1010	AL1010	Dropper, lens cleaning fluid	1
TR300-255	AL255	Loupe, magnifying	1
TR300-271	AL271	Base, lens maintenance	1
TR300-7388	787388	Mirror polish (250 ml)	1



Broadest product line in the industry!



Hypertherm, Inc.
Hanover, NH 03755 USA
603-643-3441 Tel

Hypertherm Europe B.V.
4704 SE Roosendaal, Nederland
31 165 596907 Tel

**Hypertherm (Shanghai)
Trading Co., Ltd.**
PR China 200052
86-21 5258 3330 /1 Tel

Hypertherm (S) Pte Ltd.
Singapore 349567
65 6 841 2489 Tel

**Hypertherm (India) Thermal
Cutting Pvt. Ltd.**
Chennai, Tamil Nadu
91 0 44 2834 5361 Tel

Hypertherm Brasil Ltda.
Guarulhos, SP - Brasil
55 11 2409 2636 Tel

Hypertherm México, S.A. de C.V.
México, D.F.
52 55 5681 8109 Tel

www.hypertherm.com



Hypertherm[®]

Cut with confidence[®]